

Job Name _____
 Purchaser _____
 Submitted to _____
 Unit Designation _____

Location _____
 Engineer _____
 Reference _____ Approval _____ Construction _____
 Schedule # _____

Specifications

| | | | |
|--------------------------|--------------------------------------|-----------------|----------------------------|
| Performance | Nominal Capacity ¹ | Cooling (Btu/h) | 54,000 |
| | | Heating (Btu/h) | 61,400 |
| Power | Voltage | ø / V / Hz | 1 / 208-230 / 60 |
| | Nominal Running Current (A) | | 2.10 |
| Fan | Type | | Sirocco (2) |
| | Motor | Type | BLDC (2) |
| | | Output (W) | 183 X 2 |
| Airflow | CFM (UL) | H/M/L | 1,413 / 1,307 / 1,201 |
| | Total CFM Range ² | | 1,201 - 1,540 |
| External Static Pressure | Standard | "WC | 0.2 |
| | Min. / Max. | "WC | 0.12- 0.59 |
| Refrigerant | Type | | R410A |
| | Control Method | | Electronic Expansion Valve |
| Piping Connections | Liquid (flare) | Inches | 3/8 |
| | Suction (flare) | Inches | 5/8 |
| | Drain | Inches | OD 1 1/4, ID 1 |
| Unit Dimensions | W X H X D | Inches | 47 1/4 X 14 3/16 X 25 9/16 |
| | Weight | lbs. | 137.8 |
| | Duct Connections (inches) | Supply | 45 3/4 X 10 15/16 |
| | | Return | 45 5/8 X 10 1/4 |
| Sound Level | H / M / L | dB | 45 / 43 / 40 |
| Accessories | Filter Box | | FB-M48/H3648 |
| | External Contact Control | | MIM-B14 |
| | Wireless Receiver Kit | | MRK-A10N |
| | External Temperature Sensor | | MRW-TA |
| | CN83 Pigtail (for 12VDC VENT output) | | DB39-01263A |
| Safety Certifications | | | ETL (UL 1995) |



- Compatible with Samsung DVM S, DVM S Water, and DVM Eco systems (AM*****/AA).
- The indoor unit shall have an internal condensate pump as standard with float switch (maximum 29" lift from bottom of unit).
- High-voltage terminal block temperature sensor to disable unit in the event overheating of power connection.
- Discharge air temperature sensor with target discharge temperature control capability

Construction

The unit shall be constructed of insulated, galvanized steel

Heat Exchanger

The heat exchanger shall be mechanically bonded fin to copper tube

Indoor Fan

Indoor fan is a centrifugal type with a single fan motor

Three fan speed settings and auto setting

Fan output can be configured during commissioning for various external static pressure ranges

Controls

The unit shall be operated via a wireless or wired remote control with DDC type signal

The unit shall integrate with the Samsung NASA Controls Network Solution

Controls shall integrate with a BMS system

Control wiring shall be 2 X 16 AWG shielded wire

Air Filtration

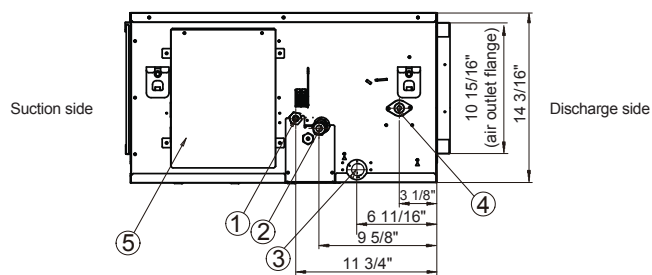
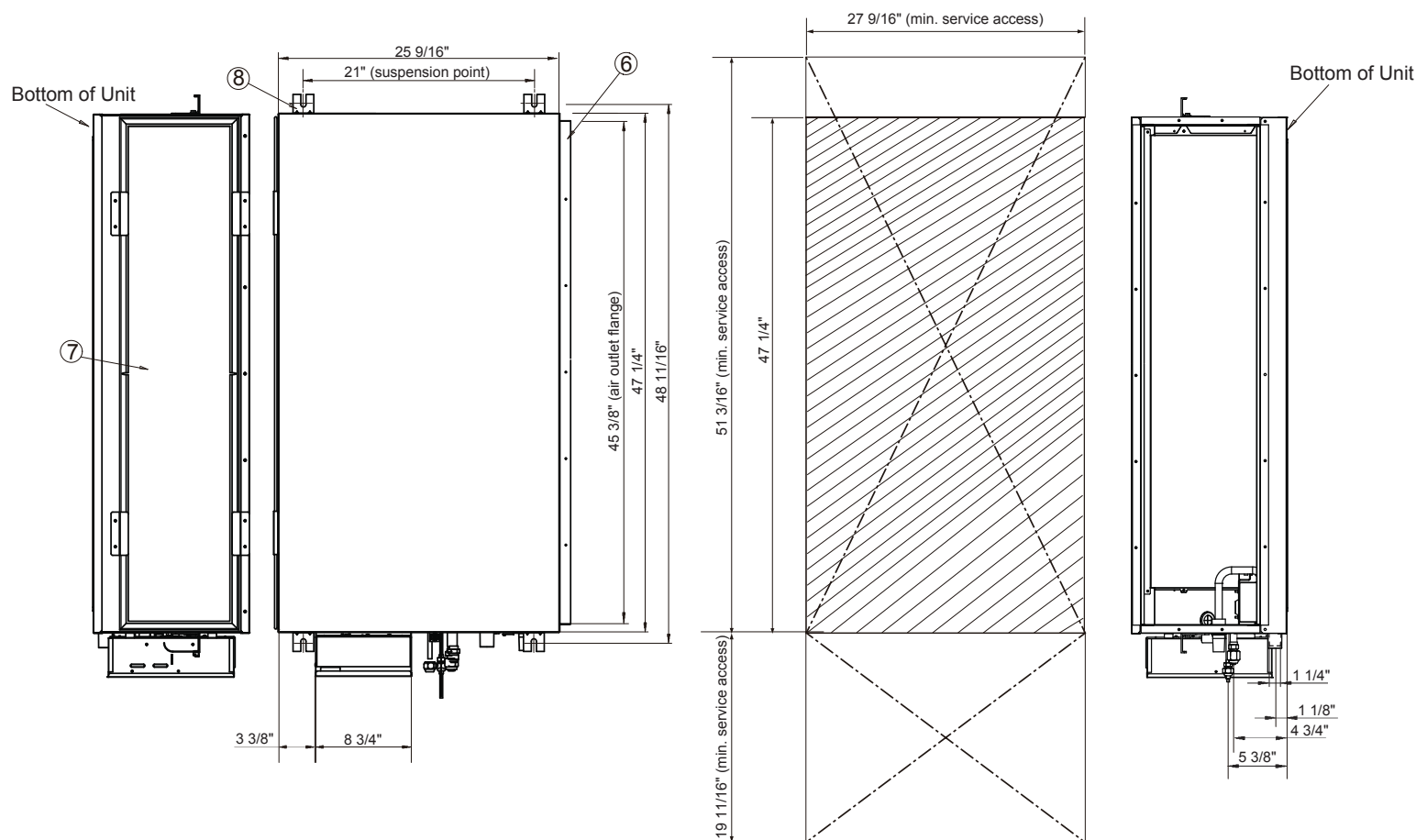
The unit shall ship with basic filtration as standard

Pressure drop across the filter must be factored into the total ESP.

¹ Nominal cooling capacities are based on: Indoor temperature: 80 °F DB, 67°F WB. Outdoor temperature: 95°F DB, 75°F WB.
 Nominal heating capacities are based on: Indoor temperature: 70 °F DB, 60°F WB. Outdoor temperature: 47°F DB, 43°F WB.

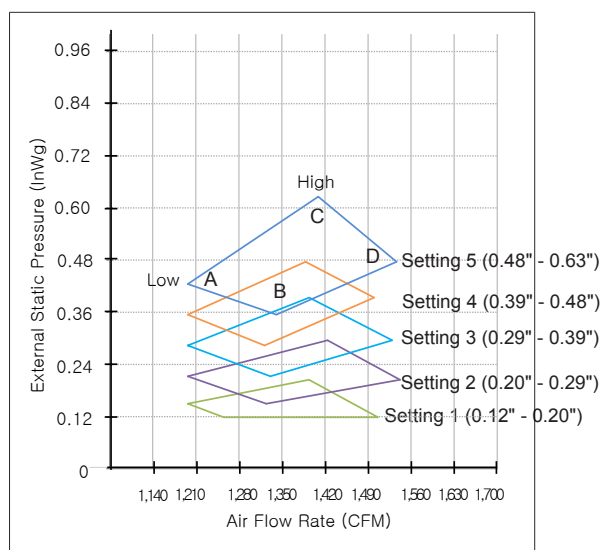
² Refer to technical data book for fan performance details and settings

Samsung HVAC maintains a policy of ongoing development, specifications are subject to change without notice.



| No. | Name | Description |
|-----|---|----------------|
| ① | Liquid Pipe Connection | Ø 3/8" Flare |
| ② | Gas Pipe Connection | Ø 5/8" Flare |
| ③ | Drain Pipe Connection (gravity drain) | OD 1", ID 3/4" |
| ④ | Drain Pipe Connection (condensate pump) | OD 1", ID 3/4" |
| ⑤ | Control Box | - |
| ⑥ | Air Discharge Flange | - |
| ⑦ | Air Inlet | - |
| ⑧ | Suspension Hook | 5/16" - 3/8" |

P-Q Curve



Fan Curve Data

| Indoor Unit ESP Setting | Point A | | Point B | | Point C | | Point D | |
|----------------------------|---------|------|---------|------|---------|------|---------|------|
| | "WC | CFM | "WC | CFM | "WC | CFM | "WC | CFM |
| 1 (0.12" - 0.20") | 0.15 | 1201 | 0.12 | 1250 | 0.20 | 1392 | 0.12 | 1504 |
| 2 (0.20" - 0.29") | 0.20 | 1201 | 0.15 | 1330 | 0.295 | 1428 | 0.205 | 1545 |
| 3 (0.29" - 0.39") | 0.28 | 1201 | 0.21 | 1338 | 0.40 | 1392 | 0.295 | 1532 |
| 4 (0.39" - 0.48") | 0.35 | 1201 | 0.29 | 1322 | 0.48 | 1384 | 0.394 | 1500 |
| 5 (0.48" - 0.63") | 0.43 | 1201 | 0.35 | 1342 | 0.63 | 1404 | 0.475 | 1535 |