

## Samsung Console, Single Zone, Split System

Job Name \_\_\_\_\_

Purchaser \_\_\_\_\_

Submitted to \_\_\_\_\_

Unit Designation \_\_\_\_\_

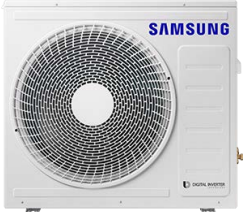
Location \_\_\_\_\_

Engineer \_\_\_\_\_

Reference \_\_\_\_\_ Approval \_\_\_\_\_ Construction \_\_\_\_\_

Schedule # \_\_\_\_\_

Specifications			
Model	Indoor Unit Model Number (US Code)		AC018BNJDCH/AA (CNH18JDB)
	Outdoor Unit Model Number (US Code)		AC018BXADCH/AA (CXH18ADB)
Performance	Nominal Capacity	Cooling / Heating (Btu/h)	17,000 / 19,000
	Capacity Range	Cooling (Btu/h)	5,500 - 20,000
		Heating (Btu/h)	4,000 - 21,000
	AHRI 210-240 2017 <sup>1</sup>	SEER	18.4
		EER	10.0
		HSPF	8.50
	AHRI 210-240 2023 <sup>2</sup>	SEER2	18.8
		EER2	10.0
HSPF2		7.8	
Power	Voltage	ø / V / Hz	1 / 208-230 / 60
	Working Voltage Range (VAC)		187 - 253
	Operating Current (min. / std. / max.)	Cooling (A)	2.2 / 7.7 / 10.3
		Heating (A)	2.0 / 8.6 / 13.3
	Max. Breaker	Amps	25
	Min. Circuit Ampacity (A)		20.1
Dimensions	W X H X D (in.)	Indoor Unit	28 3/8 X 7 13/16 X 24 7/16
		Outdoor Unit	34 5/8 X 31 7/16 X 12 1/4
	Weight (lbs.)	Indoor Unit	35.1
		Outdoor Unit	118.4
Sound Pressure Level	Indoor Unit dB(A)	L / M / H	35 / 39 / 43
	Outdoor Unit dB(A)	Cooling / Heating (high)	48 / 48
Operating Temperatures	Outdoor	Cooling	23 ~ 122°F (-5 ~ 50°C) 0 ~ 122°F (-18 ~ 50°C) W/Baffle
		Heating	-13 ~ 75°F (-25 ~ 24°C)
	Indoor	Cooling	61 ~ 90°F (16 ~ 32°C)
		Heating	T ≤ 86°F (30°C)
	Pipe Connections	Indoor & Outdoor	High side
Low side			1/2"
Maximum (ft.)		164	
Maximum Vertical Separation (ft.)		98.4	
Condensate Connection			1 1/4 in. OD, 1 in. ID
Refrigerant	Type		R410A
	Factory Charge	lbs.	4.41
	Charged for		24.6 ft.
Compressor	Manufacturer		Samsung
	Type		Inverter Driven, Twin BLDC Rotary
	RLA	Amps	12.7
Evaporator Fan	Type		BLDC (1) With Turbo Type Fan (1)
	Air Volume	CFM (L/M/H)	261 / 297 / 332
	Output	Watts	35
Condenser Fan	Motor		BLDC With Axial Type Fan (1)
	FLA / Watts / CFM (max.)		1.25A X 1 / 125W X 1 / 2,154 CFM
Safety	Certifications	UL 60335-2-40	
	Devices	PCB fuses, indoor unit terminal block thermal fuse, current transformer, over-voltage protection, crankcase heating, temperature limit protection logic, compressor overload sensing	



### General Information

- The outdoor unit shall supply power to indoor unit via 14 AWG X 3 power wire
- High-voltage terminal block temperature sensor to disable unit in the event of power connection overheating
- Auto-restart after power loss
- Soft-start compressor minimizing current inrush
- Base pan heater equipped as standard
- All heat exchangers shall be mechanically bonded aluminum fin to copper tube
- The condensing unit heat exchanger salt spray test method: ISO-9227- The heat exchanger showed no unusual rust or corrosion development to 3,000 hours
- The front panel shall have LED indicator lights, touch controls, IR receiver, and 1 motorized louver.

### Option settings

- The outdoor unit shall have snow accumulation prevention option setting to prevent snow drifting against an idle outdoor unit.
- Night-time Quiet Mode: reduction of operational sound during evening hours (*automatic or manual activation*)
- Emergency Temperature Output (ETO) function: when indoor unit is in error status or when room temperature exceeds configurable temperature level, the system outputs a signal to an external source, e.g., backup system, building management system, alert device (ex: status light, warning lamp, buzzer)
- Maximum Current Control configurable from 50% - 100% via outdoor unit, wired controller or central controls
- System can be configured as heating/cooling, cooling only, or heating only via outdoor unit option settings

### Indoor Fan

- Indoor fan is a single turbo type
- The unit shall discharge cool air from the upper outlet louver (motorized) while in cooling mode and warm air from the upper and lower (manual adjustment only) outlets while in heating mode.
- Three fan speed settings and auto setting
- Washable filter as standard

### Construction

- Outdoor unit: Galvanized steel with a baked-on powder coated finish for durability
- Indoor unit: Insulated, HIPS chassis certified to UL94 V0

### Controls

- Control wiring shall be 2 X 16 AWG
- Wireless controller included as standard.
- Wired controllers must be purchased separately
- Dual set temperature support when connected to MWR-WG00UN Advanced Wired Controller or central control options.
- No additional interface modules/adapters are required when connecting to Samsung central control options.
- The unit shall be operated via a wireless or wired remote control with DDC type signal

### Refrigerant System

- The compressor shall be hermetically sealed, inverter-controlled BLDC rotary type
- Refrigerant flow shall be controlled by an electronic expansion valve at outdoor unit

### Warranty

10 years compressor, 10 years parts, 1-year limited labor (conditions apply)

This publication reflects both the 1987 Appendix M metric (SEER) and the 2023 Appendix M1 metric (SEER2). Efficiency requirements are published at 10 C.F.R. 430.32(c). Please refer to [www.AHRInet.org](http://www.AHRInet.org) for more information about updated energy metrics.

<sup>1</sup>Performance data certified by AHRI to AHRI 210-240 (2017) with Addendum 1.

<sup>2</sup>Performance data certified by AHRI to AHRI 210-240 (2023). Effective January 1st, 2023.

Samsung HVAC maintains a policy of ongoing development, specifications are subject to change without notice. Refer to [www.AHRIdirectory.org](http://www.AHRIdirectory.org) for current reference numbers.

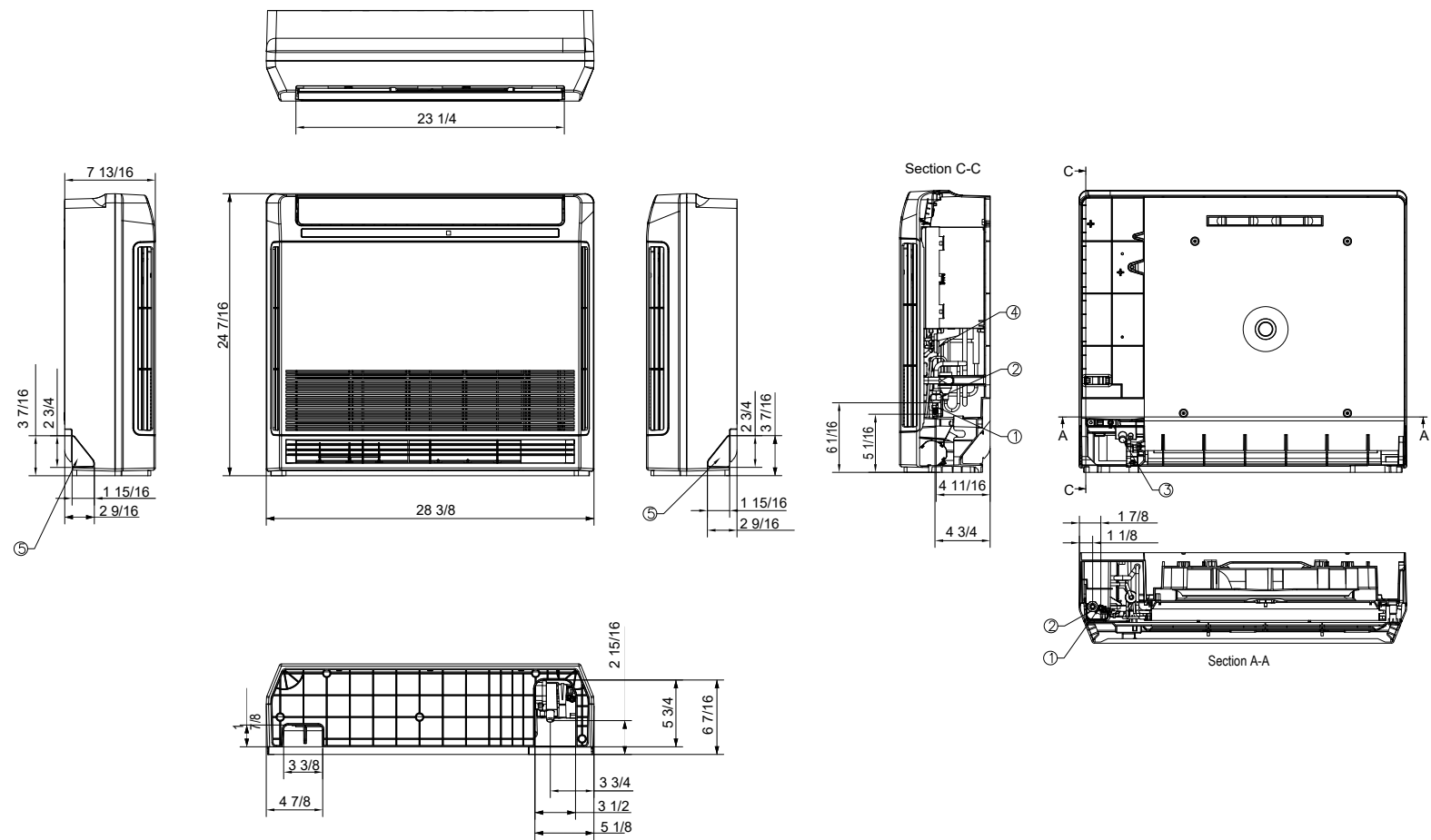


Optional Accessories

Wired controller	Advanced	MWR-WG00UN
	Touchscreen	MWR-SH11UN
Thermostat adapter (24vac)		MIM-A60UN
Wi-Fi adapter		MIM-H05UN
External temperature sensor		MRW-TA
External contact control		MIM-B14
Wall bracket (for outdoor unit)		CKN-250
Wind baffle	Front	WBF-7M
	Back	WBB-7M-B
Hail guard kit (includes back and side guards)		HGK-2
Line sets - insulated and flared, interconnect cables included		25' - ILS2507
		50' - ILS5007

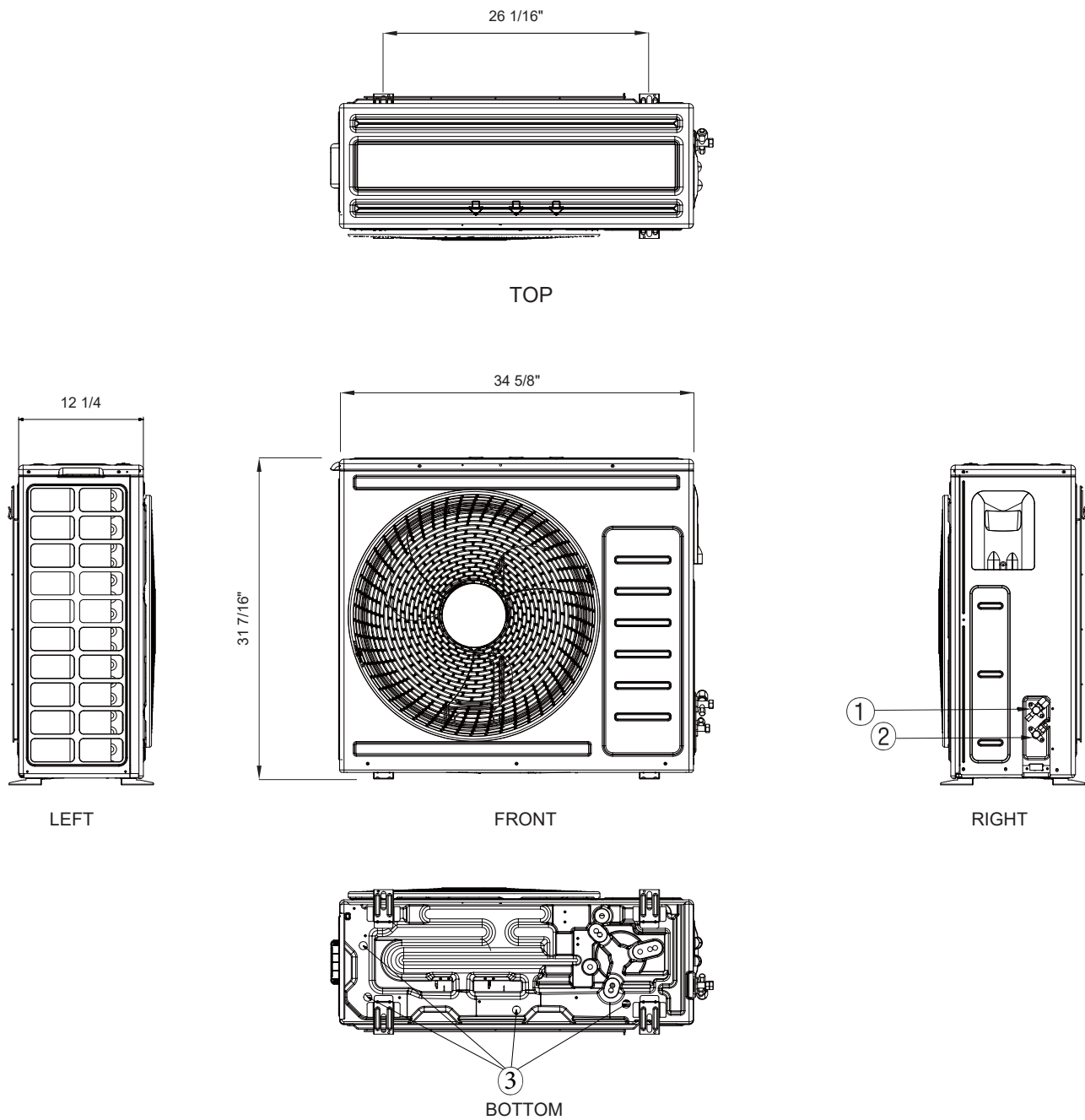
Samsung Console, Single Zone, Split System

AC018BNJDCH/AA Dimensional Drawing



No.	Description
1	Liquid pipe connection
2	Suction pipe connection
3	Drain connection
4	Power and comm.wire conduit
5	Drain Knockout

Note: Actual appearance may vary.



No.	Name	Description
1	Refrigerant liquid pipe	Ø 1/4
2	Refrigerant gas pipe	Ø 1/2
3	Drain hole	Connect with provided drain plug