

Job Name _____
Purchaser _____
Submitted to _____
Unit Designation _____

Location _____
Engineer _____
Reference _____ Approval _____ Construction _____
Schedule # _____

Specifications			
Model	Indoor Unit Model Number (US Code)		AC012BNLDC/AA (CNH12LDB)
	Outdoor Unit Model Number (US Code)		AC012BXADCH/AA (CXH12ADB)
Performance ¹	Nominal Capacity	Cooling / Heating (Btu/h)	12,000 / 14,000
	Capacity Range	Cooling (Btu/h)	3,200 – 14,000
		Heating (Btu/h)	3,000 – 17,000
	SEER / EER		20.7 / 12.00
	COP (nominal heating)		3.6
	HSPF		10.8
AHRI Certification Number		207465443	
Power	Voltage	ø / V / Hz	1 / 208-230 / 60
	Working Voltage Range (VAC)		176 - 254 (max. 3% deviation from each)
	Operating Current (min. / std. / max.)	Cooling (A)	1.3 / 4.7 / 5.9
		Heating (A)	1.1 / 5.1 / 9.3
	Max. Breaker	Amps	15
Min. Circuit Ampacity (A)	9.8		
Dimensions	W X H X D (in.)	Indoor Unit	35 7/16 X 7 13/16 X 17 5/16
	Duct Connections (W X H)	Outdoor Unit	31 1/8 X 21 9/16 X 11 1/4
		Supply (in.)	29 3/8 X 5 15/16
	Weight (lbs.)	Return (ID, in.)	30 5/8 X 6 5/8
		Indoor Unit	41.7
Outdoor Unit	74.3		
Sound Pressure Level	Indoor Unit dB(A)	L / M / H	27 / 31 / 34
	Outdoor Unit dB(A)	Cooling / Heating (high)	47 / 48
Operating Temperatures	Outdoor	Cooling	23 ~ 122°F (-5 ~ 50°C) 0 ~ 122°F (-18 ~ 50°C) w/ baffle
		Heating	-4 ~ 75°F (-20 ~ 24°C)
	Indoor	Cooling	61 ~ 90°F (16 ~ 32°C)
		Heating	T ≤ 80°F (27°C)
Pipe Connections	Indoor & Outdoor	High side (flare)	1/4"
		Low side (flare)	3/8"
	Maximum (ft.)		65.6
	Maximum Vertical Separation (ft.)		49.2
Condensate Connection (with included adapter)		1 1/16" ID for 3/4" PVC	
Refrigerant	Type		R410A
	Control Method		Electronic Expansion Valve
	Factory Charge	lbs.	2.6
	Charged for		24.6 ft
	Additional Refrigerant		0.11 oz/ft over 24.6 ft
Compressor	Manufacturer		Samsung
	Type		Inverter Driven, BLDC Rotary
	RLA	Amps	6.0
Evaporator Fan	Type		BLDC (1) With Sirocco Fan (2)
	Air Volume	CFM (L/M/H)	300 / 353 / 399 (at standard ESP)
	Output (W) / FLA (A)		84 W / 1.06 A
	Static Pressure	Standard ("WC)	0.10
Min. / Max. ("WC)		0.01 - 0.24	
Condenser Fan	Motor		BLDC With Axial Type Fan (1)
	FLA / Watts / CFM (max.)		0.42 A / 40 W / 1,060 CFM
Safety	Certifications	ETL (UL 1995)	
	Devices: PCB fuses, indoor unit terminal block thermal fuse, current transformer, over-voltage protection, crankcase heating, temperature limit protection logic, compressor overload sensing		



- General Information
- The outdoor unit shall supply power to indoor unit via 14 AWG X 3 power wire
 - High-voltage terminal block temperature sensor to disable unit in the event of power connection overheating
 - Integral condensate pump with maximum 29" lift from bottom of the unit with check valve and float switch that disables indoor should condensate overflow be detected.
 - Auto-restart after power loss
 - Soft-start compressor minimizing current inrush
 - All heat exchangers shall be mechanically bonded aluminum fin to copper tube
 - The condensing unit heat exchanger salt spray test method: ASTM-B117-18 - the heat exchanger showed no unusual rust or corrosion development to 500 hours.
 - Base pan heaters equipped as standard

- Option settings
- The outdoor unit shall have snow accumulation prevention option setting to prevent snow drifting against an idle outdoor unit.
 - Night-time Quiet Mode: reduction of operational sound during (*automatic or manual activation*).
 - Emergency Temperature Output (ETO) function: when indoor unit is in error status or when room temperature exceeds configurable temperature level, the system outputs a signal to an external source, e.g., backup system, building management system, alert device (ex: status light, warning lamp, buzzer).
 - System can be set up as heating/cooling, cooling only, or heating only via outdoor unit option setting.
 - Maximum Current Control configurable from 50% - 100% via outdoor unit, wired controller or central control

- Indoor Fan
- Indoor fan is sirocco type
 - Three fan speed settings and auto setting
 - Washable filter as standard

- Construction
- Outdoor unit shall be galvanized steel with a baked-on powder coated finish for durability
 - Indoor Unit: Insulated, galvanized steel.

- Controls
- Control wiring shall be 2 X 16 AWG wire
 - No additional interface modules/adapters are required when connecting to Samsung central control options.
 - The unit shall be operated via a wireless or wired remote control with DDC type signal
 - Dual set temperature support when connected to MWR-WG00UN Advanced Wired Controller or central control options.
 - Wired or wireless controllers must be purchased separately

- Refrigerant System
- The compressor shall be hermetically sealed, inverter-controlled BLDC rotary type.
 - Refrigerant flow shall be controlled by an electronic expansion valve at outdoor unit

Warranty

10 Years compressor, 10 years parts, 1 year limited labor when registered

ATTENTION

This air handling unit is intended for free-air discharge or for connection to a duct supplying only one room. Improper installation could contribute to the spread of smoke or flame in the event of a fire.

¹ Certified in accordance with the AHRI Unitary Small Air-Source Heat Pumps (USHP) Certification Program which is based on the latest edition of AHRI Standard 210/240.

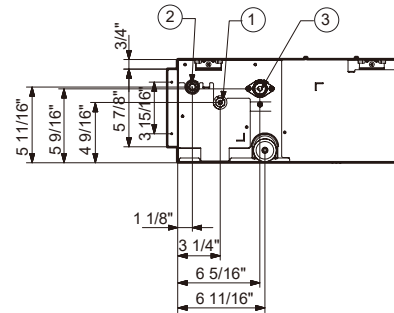
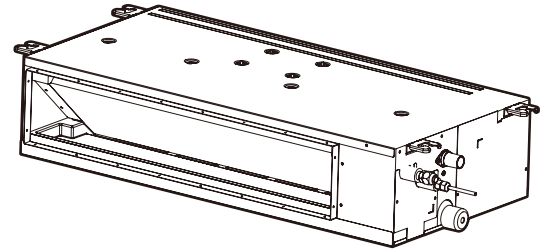
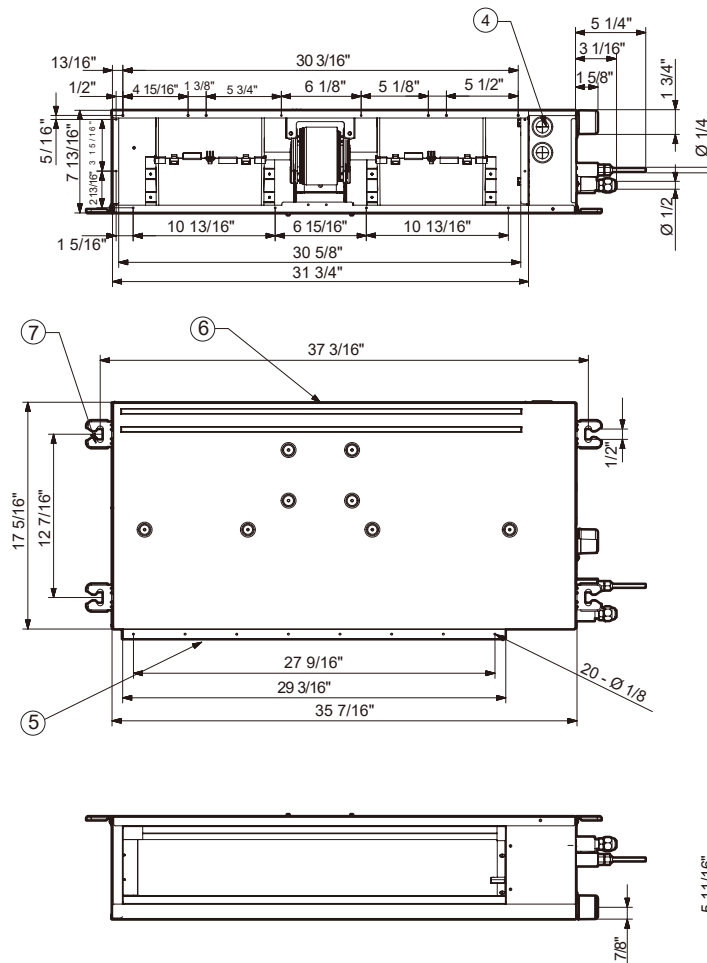
Samsung HVAC maintains a policy of ongoing development, specifications are subject to change without notice. Refer to www.AHRIdirectory.org for current reference numbers.

Optional Accessories

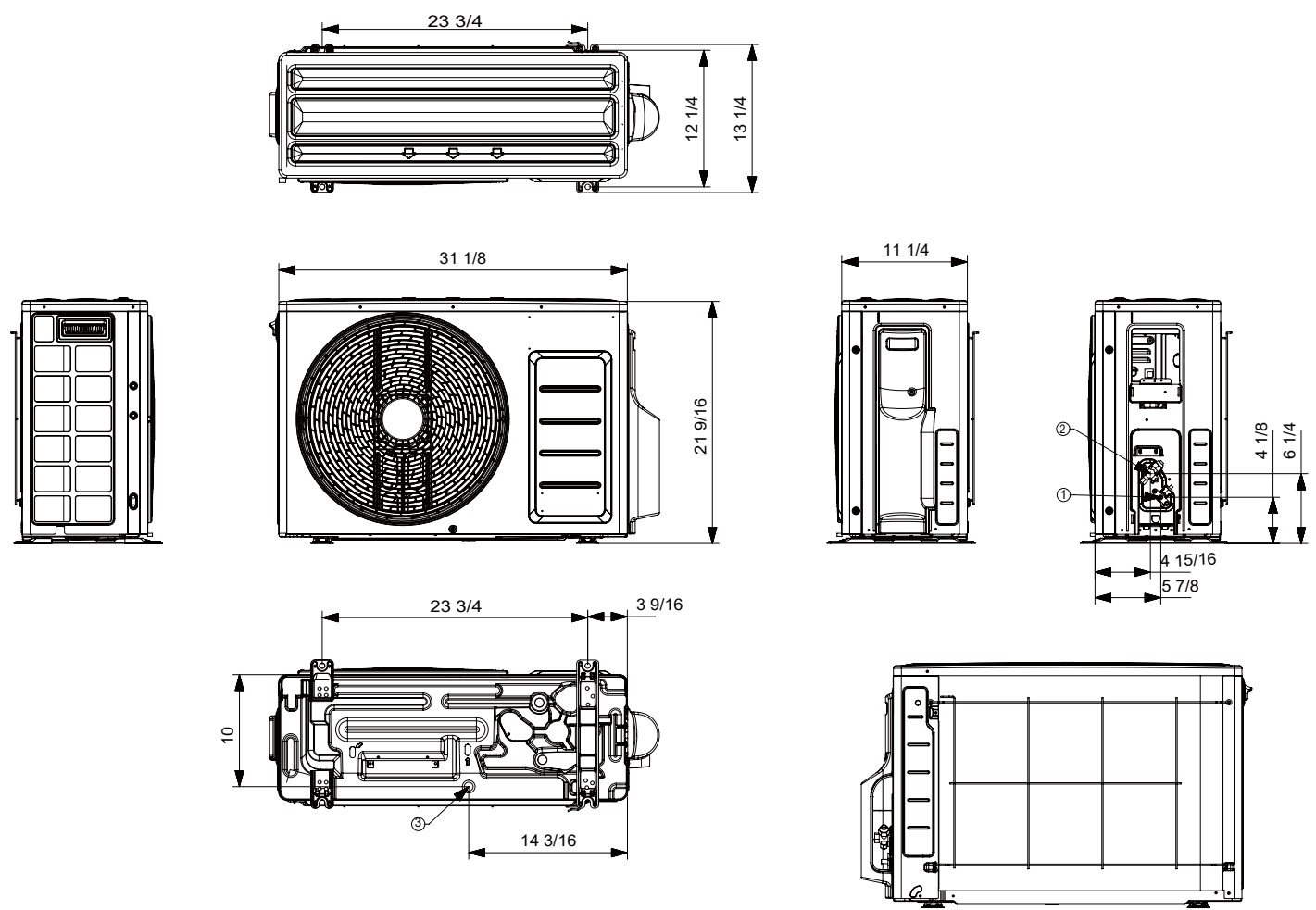
Wired Controller	Advanced	MWR-WG00UN
	Touchscreen	MWR-SH11UN
Thermostat Adaptor (for connection to a standard 24VAC thermostat)		MIM-A60UN
Wireless Signal	Wireless Signal Receiver	MRK-A10N
Control	Wireless Controller	AR-EH04U
Wi-Fi Adapter		MIM-H04UN
External Temperature Sensor		MRW-TA
Filter Box		FB-SLIM2
External Contact Control		MIM-B14
Wall Bracket (for outdoor unit)		CKN-250
Wind Baffles	Front	WBF-3M
	Back	WBB-5M
Hail Guard		TBD
Line Sets - insulated and flared, interconnect cables included		25' - ILS-2506
		50' - ILS-5006

Samsung Slim Duct, Single Zone Duct, Split System

AC012BNLDCH/AA Dimensional Drawing



No.	Name	Description
①	Refrigerant Liquid Pipe	Ø 1/4"
②	Refrigerant Gas Pipe	Ø 3/8"
③	Condensate Drain	3/4" (OD 1.05")
④	Power & Comm. Wiring Conduits	-
⑤	Supply Air Flange	-
⑥	Return Air Flange	-
⑦	Hook	-



No.	Name	Description
1	Refrigerant liquid pipe	Ø 1/4
2	Refrigerant gas pipe	Ø 3/8
3	Drain hole	Connect with provided drain plug