



SANTA-FE™
INDOOR AIR QUALITY SOLUTIONS

PRODUCT CATALOG



PIONEERS OF INDOOR AIR QUALITY SOLUTIONS.

**AT SANTA FE, WE ARE FOCUSED ON THE FRONT LINE IN DEFENSE –
THE BIG 3: DEHUMIDIFICATION, FILTRATION AND VENTILATION.**

DEHUMIDIFICATION

When a home has too much moisture, it becomes a breeding ground for pests and a trigger for indoor pollutants such as dust, pollen, mold spores and bacteria. It can also put the home's structural integrity, as well as the occupant's health and comfort, at risk.

Our innovative dehumidifiers properly maintain humidity levels — regardless of how hot it is outside and how much moisture is already in your home. At the same time, our superior filtration helps remove indoor pollutants.



VENTILATION

Santa Fe's Ultra Series whole house ventilating dehumidifiers provide the additional benefit of outdoor mechanical supply ventilation that is filtered through a MERV-13 filter.

INDUSTRY-LEADING WARRANTY.

To say we stand behind our products is an understatement. While most manufacturers offer only a 1-year warranty, every Santa Fe dehumidifier is backed with an industry-leading total peace of mind 6-year warranty that includes five years full replacement plus one year parts.

FILTERED TO THE HIGHEST STANDARDS OF FRESH.

Over a 6-year period, MERV-13 filters will remove two pounds of dust, pollen, mold spores, pet dander, and bacteria from the air in a home.* In comparison, big-box units have MERV-4 or washable filters, which only remove 7 ounces of material from the air over the same period of time.

*Based on regularly changing your air filter: see instructional manual for more information.



Small but tough, the **Compact Series** can fit into tight spaces where other dehumidifiers simply can't. Extremely powerful and efficient, they tackle excess humidity to curb harmful mold growth in the harshest of conditions.

► COMPACT70



- + **MODEL:** 4044110
- + **OPERATING TEMPERATURE:** 49°F - 95°F
- + **FILTER:** MERV-13
- + **SIZING:**
 - **CRAWLSPACES:** UP TO 1,800 SQ. FT. - 2,600 SQ. FT.
 - **BASEMENTS:** UP TO 1,800 SQ. FT. - 2,200 SQ. FT.
- + **DIMENSIONS:** 12"W X 12"H X 21"D
- + **@80°F / 60%RH**
PINT CAPACITY: 70 PINTS / 8.75 GALLONS PER DAY
ENERGY FACTOR: 2.6 L/KWH
- + **@65°F / 60%RH**
PINT CAPACITY: 43.7 PINTS / 5.4 GALLONS PER DAY
ENERGY FACTOR: 1.96 L/KWH
- + **HVAC SYSTEM INTEGRATION:** NO
- + **VENTILATION:** NO
- + **CONTROL:** ON-BOARD DEHUMIDISTAT

Our most versatile and energy-efficient dehumidifier, the **Oasis105**, is perfect for a wide range of applications, including basements, attics, and crawl spaces. It features onboard digital controls, variable speed fan, dew point cut out, and a low maintenance positive pressure condensate drain.

► OASIS105



- + **MODEL:** 4044510
- + **OPERATING TEMPERATURE:** 49°F - 95°F
- + **FILTER:** MERV-13
- + **SIZING:**
 - **CRAWLSPACES:** UP TO 3,300 SQ. FT.
 - **BASEMENTS:** UP TO 2,600 SQ. FT.
- + **DIMENSIONS:** 24"W X 14.5"H X 16"D
- + **@80°F / 60%RH**
PINT CAPACITY: 102 PINTS / 12.75 GALLONS PER DAY
ENERGY FACTOR: 3.54 L/KWH
- + **@65°F / 60%RH**
PINT CAPACITY: 67 PINTS / 8.37 GALLONS PER DAY
ENERGY FACTOR: 2.81 L/KWH
- + **HVAC SYSTEM INTEGRATION:** NO
- + **VENTILATION:** NO
- + **CONTROL:** ON-BOARD DEHUMIDISTAT OR LOW-VOLTAGE CONTROLLER





Our **Impact Series** large-capacity dehumidifiers are tough, powerful and built to take on any job in any application.

► **IMPACT155**



- + **MODEL:** 4031470
- + **OPERATING TEMPERATURE:** 49°F - 95°F
- + **FILTER:** MERV-13
- + **SIZING:**
 - **CRAWLSPACES:** UP TO 3,600 SQ. FT. - 4,400 SQ. FT.
 - **BASEMENTS:** UP TO 3,800 SQ. FT. - 4,000 SQ. FT.
- + **DIMENSIONS:** 20.25"W X 21.75"H X 38"D
- + **@80°F / 60%RH**
PINT CAPACITY: 155 PINTS / 19.375 GALLONS PER DAY
ENERGY FACTOR: 3.4 L/KWH
- + **@65°F / 60%RH**
PINT CAPACITY: 104 PINTS / 13 GALLONS PER DAY
ENERGY FACTOR: 2.89 L/KWH
- + **HVAC SYSTEM INTEGRATION:** NO
- + **VENTILATION:** NO
- + **CONTROL:** ON-BOARD DEHUMIDISTAT

Powerful, efficient and boasting a streamlined look, our **Classic Series** is essential for any basement or finished space. Popular and proven, it receives some of our highest customer ratings.

► **CLASSIC**



- + **MODEL:** 4044710
- + **OPERATING TEMPERATURE:** 56°F - 95°F
- + **FILTER:** MERV-13
- + **SIZING:**
 - **BASEMENTS:** UP TO 2,500 SQ. FT. - 2,900 SQ. FT.
- + **DIMENSIONS:** 20"W X 36"H X 17"D
- + **@80°F / 60%RH**
PINT CAPACITY: 116 PINTS / 14.5 GALLONS PER DAY
ENERGY FACTOR: 3.43 L/KWH
- + **@65°F / 60%RH**
PINT CAPACITY: 76 PINTS / 9.5 GALLONS PER DAY
ENERGY FACTOR: 2.8 L/KWH
- + **HVAC SYSTEM INTEGRATION:** NO
- + **VENTILATION:** NO
- + **CONTROL:** ON-BOARD DEHUMIDISTAT



The **Ultra Series** offers the ultimate protection. Designed with dedicated ducting for whole house dehumidification and ventilation options.

▶ **ULTRA70**



- + **MODEL:** 4044100
- + **OPERATING TEMPERATURE:** 49°F - 95°F
- + **FILTER:** MERV-13
- + **SIZING:** UP TO 1,800 SQ. FT. / 18,000 CU. FT.
- + **DIMENSIONS:** 12"W X 12"H X 28"D
- + **@80°F / 60%RH**
PINT CAPACITY: 70 PINTS / 8.75 GALLONS PER DAY
ENERGY FACTOR: 2.6 L/KWH
- + **@73°F / 60%RH**
PINT CAPACITY: 52.45 PINTS / 6.55 GALLONS PER DAY
ENERGY FACTOR: 2.04 L/KWH
- + **HVAC SYSTEM INTEGRATION:** YES
- + **VENTILATION:** OPTIONAL
- + **CONTROL:** ON-BOARD DEHUMIDISTAT OR LOW-VOLTAGE CONTROLLER

▶ **ULTRA98**



- + **MODEL:** 4044300
- + **OPERATING TEMPERATURE:** 49°F - 95°F
- + **FILTER:** MERV-13
- + **SIZING:** UP TO 2,300 SQ. FT. / 23,000 CU. FT.
- + **DIMENSIONS:** 14.5"W X 19.5"H X 32.4"D
- + **@80°F / 60%RH**
PINT CAPACITY: 100 PINTS / 12.5 GALLONS PER DAY
ENERGY FACTOR: 2.89 L/KWH
- + **@73°F / 60%RH**
PINT CAPACITY: 71.4 PINTS / 8.9 GALLONS PER DAY
ENERGY FACTOR: 2.2 L/KWH
- + **HVAC SYSTEM INTEGRATION:** YES
- + **VENTILATION:** OPTIONAL
- + **CONTROL:** LOW-VOLTAGE CONTROLLER REQUIRED

▶ **ULTRA120**



- + **MODEL:** 4044400
- + **OPERATING TEMPERATURE:** 49°F - 95°F
- + **FILTER:** MERV-13
- + **SIZING:** UP TO 3,000 SQ. FT. / 30,000 CU. FT.
- + **DIMENSIONS:** 14.4"W X 21"H X 32.2"D
- + **@80°F / 60%RH**
PINT CAPACITY: 118 PINTS / 14.75 GALLONS PER DAY
ENERGY FACTOR: 2.7 L/KWH
- + **@73°F / 60%RH**
PINT CAPACITY: 88 PINTS / 11 GALLONS PER DAY
ENERGY FACTOR: 2.1 L/KWH
- + **HVAC SYSTEM INTEGRATION:** YES
- + **VENTILATION:** OPTIONAL
- + **CONTROL:** LOW-VOLTAGE CONTROLLER REQUIRED



▶ ULTRA155



- + **MODEL:** 4031070
- + **OPERATING TEMPERATURE:** 49°F - 95°F
- + **FILTER:** MERV-13
- + **SIZING:** UP TO 3,500 SQ. FT. / 35,000 CU. FT.
- + **DIMENSIONS:** 20.25"W X 21.75"H X 41.5"D
- + **@80°F / 60%RH**
PINT CAPACITY: 155 PINTS / 19.375 GALLONS PER DAY
ENERGY FACTOR: 3.4 L/KWH
- + **@73°F / 60%RH**
PINT CAPACITY: 104 PINTS / 13 GALLONS PER DAY
ENERGY FACTOR: 2.6 L/KWH
- + **HVAC SYSTEM INTEGRATION:** YES
- + **VENTILATION:** OPTIONAL
- + **CONTROL:** LOW-VOLTAGE CONTROLLER REQUIRED

▶ ULTRA205



- + **MODEL:** 4031560
- + **OPERATING TEMPERATURE:** 49°F - 95°F
- + **FILTER:** MERV-13
- + **SIZING:** UP TO 5,000 SQ. FT. / 50,000 CU. FT.
- + **DIMENSIONS:** 20.25"W X 21.75"H X 41.5"D
- + **@80°F / 60%RH**
PINT CAPACITY: 205 PINTS / 25.625 GALLONS PER DAY
ENERGY FACTOR: 2.7 L/KWH
- + **@73°F / 60%RH**
PINT CAPACITY: 171 PINTS / 21.375 GALLONS PER DAY
ENERGY FACTOR: 2.46 L/KWH
- + **HVAC SYSTEM INTEGRATION:** YES
- + **VENTILATION:** OPTIONAL
- + **CONTROL:** LOW-VOLTAGE CONTROLLER REQUIRED

MAKE THE ENTIRE HOME COMFORTABLE.

Buildup of indoor pollution in today's homes is a direct result of our efforts to conserve energy and save money. As the techniques and materials used to insulate and seal our homes have improved, the result is stale and polluted air trapped inside.

Fresh air supply ventilation systems, such as a Santa Fe Whole House Ventilating Dehumidifier, allow improved control and treatment of the air that enters the house. By slightly pressurizing the house, these systems minimize outdoor pollutants in the living space and reduce the potential for back-drafting of combustion gases from fireplaces and appliances. Santa Fe Whole House Ventilating Dehumidifiers filter outdoor air before introducing it into the home.



The **UltraMD33** is the first true in-wall dehumidifier. Featuring a tamper-proof cover, this unit runs independently of the HVAC system and creates a comfortable, healthier living environment for residents. Ideal for apartments, ductless mini-split applications, basements, and other space dehumidification needs. The MD33 can also be installed on a wall with the Surface Mount Kit and partially through a wall with the Bezel Kit.

▶ **ULTRAMD33**



- ✦ **MODEL:** 4044610
- ✦ **OPERATING TEMPERATURE:** 49°F - 95°F
- ✦ **FILTER:** WASHABLE
- ✦ **SIZING:** UP TO 1,200 SQ. FT. / 12,000 CU. FT.
- ✦ **DIMENSIONS:** 14.19"W X 30"H X 5.75"D
- ✦ **@80°F / 60%RH**
PINT CAPACITY: 37 PINTS / 4.6 GALLONS PER DAY
ENERGY FACTOR: 2.4 L/KWH
- ✦ **@65°F / 60%RH**
PINT CAPACITY: 22 PINTS / 2.75 GALLONS PER DAY
ENERGY FACTOR: 1.64 L/KWH
- ✦ **HVAC SYSTEM INTEGRATION:** NO
- ✦ **VENTILATION:** NO
- ✦ **CONTROL:** ON-BOARD DEHUMIDISTAT

SURFACE MOUNT KIT

PART NUMBER: 4037766

The Ultra Series Surface Mount Kit can be used to permanently install the Ultra Series MD33 In-Wall Dehumidifier to masonry or CMU block when through-the-wall installation is not available.



2X4 WALL MOUNTING BEZEL KIT

PART NUMBER: 4037767

The Ultra Series 2X4 Wall Mounting Bezel Kit can be used to permanently install the Ultra Series MD33 In-Wall Dehumidifier in a 2X4 cavity without having to cut a hole in both sides of the drywall. The powder-coated metal bezel wraps around the front face of the dehumidifier giving it a completely polished look to blend into any environment.

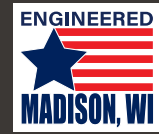


COMMITTED TO YOUR SUCCESS.

At Santa Fe, we are committed to partnering with you. After all, when you succeed, we succeed. And that's why we're with you every step of the way as you become a dealer of Santa Fe and our line of dehumidifiers.

WHAT YOU CAN EXPECT FROM US

- + Comprehensive product training
- + Application and installation guidance
- + Field service and warranty repairs
- + Marketing and product literature
- + Customer service excellence



The Santa Fe Difference:

- + **WARRANTY/QUALITY/LOW MAINTENANCE**
Industry-Leading 5-Year Warranty
- + **AIR FILTRATION**
Industry-Leading MERV-13 Filters

- + **ENERGY SAVINGS AND EFFICIENCY**
Up to 36% More Efficient than Competitors
- + **SALES SUPPORT**
Dedicated Support Nationwide
- + **HEADQUARTERED IN MADISON, WI**
Engineered and Supported in the USA



FILTERS

► COMPACT70 / ULTRA70



MERV-13

- + SIZE: 9" x 11" x 1"
- + PART NUMBER: 4037724
- + COMPATIBLE DEHUMIDIFIERS:
 - Compact70
 - Ultra70



PRE-FILTER

- + SIZE: 9" x 11" x .25"
- + PART NUMBER: 4027168
- + COMPATIBLE DEHUMIDIFIERS:
 - Compact70

► OASIS105



MERV-13

- + SIZE: 14" x 12" x 1"
- + PART NUMBER: 4042005
- + COMPATIBLE DEHUMIDIFIERS:
 - Oasis105

► CLASSIC



MERV-13

- + SIZE: 16" x 20" x 2"
- + PART NUMBER: 4039391
- + COMPATIBLE DEHUMIDIFIERS:
 - Classic

► ULTRA98 / ULTRA120



MERV-13

- + SIZE: 14" x 17.5" x 1"
- + PART NUMBER: 4037722
- + COMPATIBLE DEHUMIDIFIERS:
 - Ultra98
 - Ultra120

► IMPACT155 / ULTRA155 / ULTRA205



MERV-13

- + SIZE: 16" x 20" x 2"
- + PART NUMBER: 4039391
- + COMPATIBLE DEHUMIDIFIERS:
 - Impact155
 - Ultra155
 - Ultra205

► ULTRAMD33



WASHABLE

- + SIZE: 11" x 12.6" x 0.1"
- + PART NUMBER: 4037714
- + COMPATIBLE DEHUMIDIFIERS:
 - UltraMD33

► COMPACT70



WASHABLE

- + SIZE: 11.4" x 9" x 0.75"
- + PART NUMBER: 4044385
- + COMPATIBLE DEHUMIDIFIERS:
 - Compact70

Santa Fe dehumidifiers are equipped with the best filtration on the market. Our standard MERV-13 filters capture harmful contaminants in the air and keep the units running at peak efficiency.



INSTALLATION ACCESSORIES

► CONTROLS



DEH 3000 / 3000R

- DEH 3000 PART NUMBER: 4028539
- DEH 3000R PART NUMBER: 4028407
- COMPATIBLE DEHUMIDIFIERS:
 - All Ultra Series except the UltraMD33

► HANG KITS



SMALL HANGING KIT

- PART NUMBER: 4036695
- COMPATIBLE DEHUMIDIFIERS:
 - Compact70
 - Ultra70
 - Ultra98
 - Ultra120

► DEHUMIDIFIER RISERS



DEHUMIDIFIER RISERS

- PART NUMBER: 4042109
1-Pack (4 Risers/Pack)
- PART NUMBER: 4041602
10-Pack (4 Risers/Pack)
- COMPATIBLE DEHUMIDIFIERS:
 - All except the Classic and UltraMD333



LARGE HANGING KIT

- PART NUMBER: 4042835
- COMPATIBLE DEHUMIDIFIERS:
 - Oasis105
 - Impact155
 - Ultra155
 - Ultra205

► CONDENSATE PUMPS



- PART NUMBER: 4022220
- COMPATIBLE DEHUMIDIFIERS:
 - All Santa Fe dehumidifiers

► SMARTAIRE™ POWER DAMPER



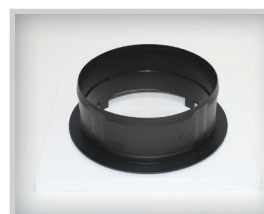
- PART NUMBER: 4042960
- COMPATIBLE DEHUMIDIFIERS:
 - All Ultra Series dehumidifiers except the UltraMD33

► DUCT KITS



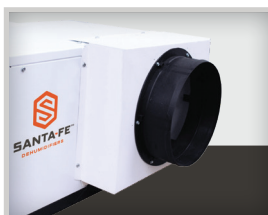
COMPACT SERIES

- RETURN DUCT KIT
PART NUMBER: 4030204
- SUPPLY DUCT KIT
PART NUMBER: 4030203
- COMPATIBLE DEHUMIDIFIERS:
 - Compact70



IMPACT SERIES

- RETURN DUCT KIT
PART NUMBER: 4028610
- SUPPLY DUCT KIT
PART NUMBER: 4028607
- COMPATIBLE DEHUMIDIFIERS:
 - Impact155



OASIS SERIES

- SUPPLY DUCT KIT PART
NUMBER: 4042275
- SUPPLY AND RETURN DUCT
KIT PART NUMBER: 4042265
- COMPATIBLE DEHUMIDIFIERS:
 - Oasis105



CLASSIC SERIES

- SUPPLY DUCT KIT PART
NUMBER: 4020623
- SUPPLY AND RETURN DUCT
KIT PART NUMBER: 4021453
- COMPATIBLE DEHUMIDIFIERS:
 - Classic

PRODUCT

SET IT + FORGET IT.

Santa Fe offers a full line of free-standing dehumidifiers. What does this mean? It means a quick solution to protect your investment. With no buckets to empty.

Applications include:

- + Basements
- + Crawl Spaces
- + Garages
- + Theater/Multi-Use Areas
- + Workshops
- + Storage Rooms
- + Exercise Rooms



SANTA-FE™

6-YEAR TOTAL PEACE OF MIND
WARRANTY

5-YEAR FULL REPLACEMENT + 1-YEAR PARTS

ULTRAMD33







@ 80°F / 60%RH WATER REMOVAL	37 PINTS/DAY 4.6 GALLONS/DAY
EFFICIENCY	5.1 PINTS/KWH
ENERGY FACTOR	2.4 L/KWH
@ 65°F / 60%RH WATER REMOVAL	22 PINTS/DAY 2.75 GALLONS/DAY
EFFICIENCY	3.46 PINTS/KWH
ENERGY FACTOR	1.64 L/KWH
CURRENT DRAW	2.2 AMPS*
REFRIGERANT	R454B
AIR FILTER	WASHABLE
DIMENSIONS	14.19" W 30" H 5.75" D
WEIGHT	39 LBS.
SIZED FOR IN-WALL APPLICATIONS	UP TO 1,200 FT ²
WARRANTY	6 YEARS

The UltraMD33 In-Wall Dehumidifier is ideal for multi-family applications, basements, hotels and other spaces needing dehumidification.






LINE UP

	COMPACT70	OASIS105	CLASSIC	IMPACT155
				
@ 80°F / 60%RH WATER REMOVAL	70 PINTS/DAY 8.75 GALLONS/DAY	102 PINTS/DAY 12.75 GALLONS/DAY	116 PINTS/DAY 14.5 GALLONS/DAY	155 PINTS/DAY 19.375 GALLONS/DAY
EFFICIENCY	5.5 PINTS/KWH	7.5 PINTS/KWH	7.27 PINTS/KWH	7.3 PINTS/KWH
ENERGY FACTOR	2.6 L/KWH	3.54 L/KWH	3.43 L/KWH	3.4 L/KWH
@ 65°F / 60%RH WATER REMOVAL	43.7 PINTS/DAY 5.4 GALLONS/DAY	67 PINTS/DAY 8.37 GALLONS/DAY	76 PINTS/DAY 9.5 GALLONS/DAY	104 PINTS/DAY 13 GALLONS/DAY
EFFICIENCY	4.1 PINTS/KWH	5.95 PINTS/KWH	5.9 PINTS/KWH	6.1 PINTS/KWH
ENERGY FACTOR	1.96 L/KWH	2.81 L/KWH	2.8 L/KWH	2.89 L/KWH
CURRENT DRAW	3.7 AMPS*	6.1 AMPS*	4.5 AMPS*	8.0 AMPS**
REFRIGERANT	R454B	R454B	R454B	R454B
AIR FILTER	MERV-13	MERV-13	MERV-13	MERV-13
DIMENSIONS	12" W 12" H 21" D	24" W 14.5" H 16" D	20" W 36" H 17" D	20.25" W 21.75" H 38" D
WEIGHT	55 LBS.	59 LBS.	110 LBS.	140 LBS.
SIZED FOR CRAWL SPACES	UP TO 2,600 FT ² TIGHTLY SEALED UP TO 2,200 FT ² MODERATELY SEALED UP TO 1,800 FT ² LOOSELY SEALED	UP TO 3,300 FT ² TIGHTLY SEALED UP TO 2,900 FT ² MODERATELY SEALED UP TO 2,500 FT ² LOOSELY SEALED	NOT APPLICABLE TO CRAWL SPACES	UP TO 4,400 FT ² TIGHTLY SEALED UP TO 4,000 FT ² MODERATELY SEALED UP TO 3,600 FT ² LOOSELY SEALED
SIZED FOR BASEMENTS	UP TO 2,200 FT ² TIGHTLY SEALED UP TO 2,000 FT ² MODERATELY SEALED UP TO 1,800 FT ² LOOSELY SEALED	UP TO 2,600 FT ² TIGHTLY SEALED UP TO 2,400 FT ² MODERATELY SEALED UP TO 2,200 FT ² LOOSELY SEALED	UP TO 2,900 FT ² TIGHTLY SEALED UP TO 2,700 FT ² MODERATELY SEALED UP TO 2,500 FT ² LOOSELY SEALED	UP TO 4,000 FT ² TIGHTLY SEALED UP TO 3,800 FT ² MODERATELY SEALED UP TO 3,600 FT ² LOOSELY SEALED
WARRANTY	6 YEARS	6 YEARS	6 YEARS	6 YEARS

*@ 65°F / 60%RH



** @ 80°F / 60%RH

PRODUCT

	ULTRA70	ULTRA98	ULTRA120
			
@ 80°F / 60%RH WATER REMOVAL	70 PINTS/DAY 8.75 GALLONS/DAY	100 PINTS/DAY 12.5 GALLONS/DAY	118 PINTS/DAY 14.75 GALLONS/DAY
EFFICIENCY	5.5 PINTS/KWH	6.12 PINTS/KWH	5.7 PINTS/KWH
ENERGY FACTOR	2.6 L/KWH	2.89 L/KWH	2.7 L/KWH
@ 73°F / 60%RH WATER REMOVAL	52.5 PINTS/DAY 6.5 GALLONS/DAY	71.4 PINTS/DAY 8.9 GALLONS/DAY	88 PINTS/DAY 11 GALLONS/DAY
EFFICIENCY	4.3 PINTS/KWH	4.68 PINTS/KWH	4.45 PINTS/KWH
ENERGY FACTOR	2.04 L/KWH	2.22 L/KWH	2.1 L/KWH
CURRENT DRAW	4.1 AMPS*	5.6 AMPS*	7.4 AMPS*
REFRIGERANT	R454B	R454B	R454B
BLOWER	150 CFM @ 0.0" WG 140 CFM @ 0.2" WG 130 CFM @ 0.4" WG	320 CFM @ 0.0" WG 297 CFM @ 0.2" WG 215 CFM @ 0.4" WG	350 CFM @ 0.0" WG 285 CFM @ 0.2" WG 210 CFM @ 0.4" WG
AIR FILTER	MERV-13	MERV-13	MERV-13
DIMENSIONS	12" W 12" H 28" D	14.5" W 19.5" H 32.4" D	14.4" W 21" H 32.2" D
WEIGHT	55 LBS.	81 LBS.	91 LBS.
SIZING	UP TO 1,800 FT. ²	UP TO 2,300 FT. ²	UP TO 3,000 FT. ²
WARRANTY	6 YEARS	6 YEARS	6 YEARS



LINE UP

ULTRA155	ULTRA205
	
155 PINTS/DAY 19.375 GALLONS/DAY	205 PINTS/DAY 25.625 GALLONS/DAY
7.3 PINTS/KWH	5.7 PINTS/KWH
3.4 L/KWH	2.7 L/KWH
104 PINTS/DAY 13 GALLONS/DAY	171 PINTS/DAY 21.375 GALLONS/DAY
5.5 PINTS/KWH	5.19 PINTS/KWH
2.6 L/KWH	2.46 L/KWH
8.0 AMPS**	13.2 AMPS**
R410A	R410A
391 CFM @ 0.0" WG 363 CFM @ 0.2" WG 337 CFM @ 0.4" WG	526 CFM @ 0.0" WG 495 CFM @ 0.2" WG 458 CFM @ 0.4" WG
MERV-13	MERV-13
20.25" W 21.75" H 41.5" D	20.25" W 21.75" H 41.5" D
140 LBS.	140 LBS.
UP TO 3,500 FT. ²	UP TO 5,000 FT. ²
6 YEARS	6 YEARS

*@ 73°F / 60%RH
** @ 80°F / 60%RH

DUCT + VENTILATE.

The Ultra Series, formerly the Ultra Aire brand, focuses on providing dehumidification to the whole house or project. In addition, it provides the option to ventilate a home, with the purpose of maintaining a healthy and safe living environment.



SANTA-FE™

6-YEAR TOTAL PEACE OF MIND WARRANTY

5-YEAR FULL REPLACEMENT + 1-YEAR PARTS



SANTA-FE™
INDOOR AIR QUALITY SOLUTIONS



Contact us:

Santa-Fe-Products.com or 800-533-7533

©2024 Therma-Stor LLC
TS-2073 11/24 Rev C