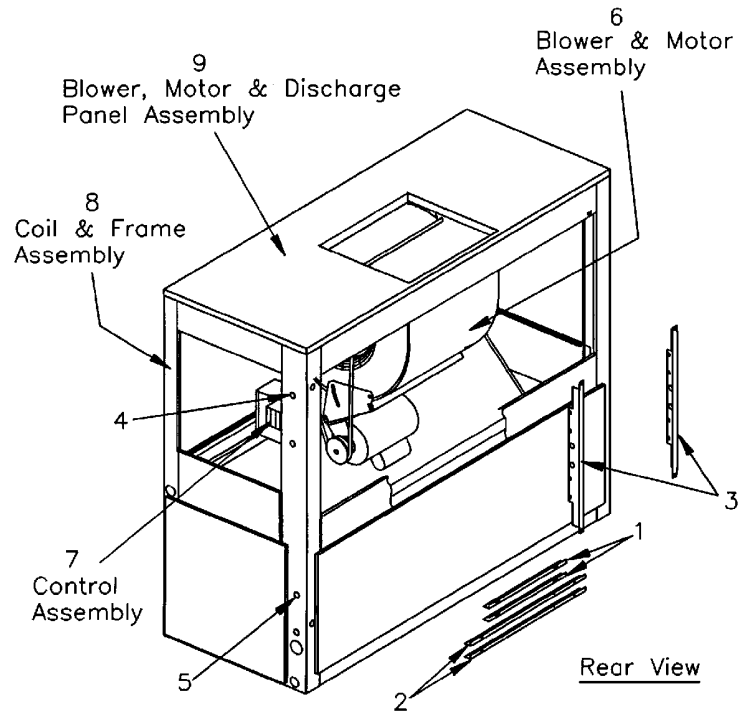


Part No.	Reference No.	Quantity	Description
75000637	SEC 1		GENERAL ASSEMBLY
75000638	SEC 2		CONTROL ASSEMBLY
75000639	SEC 3		COIL FRAME ASSEMBLY
75000634	SEC 4		COIL & TUBING ASSEMBLY
75000626	SEC 5		PANEL ASSEMBLIES
75000640	SEC 6		BLOWER, MOTOR & DISCHARGE PANEL ASSEMBLY
75000641	SEC 7		HOUSING ASSEMBLY
75000629	SEC 8		VERTICAL CHANNEL & PAN ASSEMBLY
75000628	SEC 9		HORIZONTAL CHANNEL & PAN ASSEMBLY

General Assembly

75000637

REV
A



*NOT ILLUSTRATED

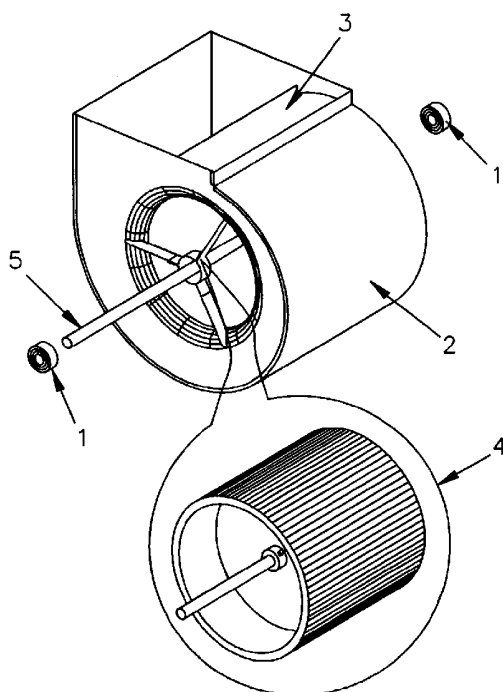
View is determined by facing Appearance Nameplate.
This is a typical illustration. The unit in the field may not appear exactly as shown.

Part No.	Reference No.	Quantity	Description
BUS00266	*	1	BUSHING; ANTI-SHORT, .717 OD X .687 ID
BUS00343	*	1	BUSHING;SNAP
CON00212	*	1	CONNECTOR;
NUT00507	*	1	NUT; ASSEMBLY, WITH WASHER
PAI00074	*	1	PAINT; SPRAY, SLATE GREY, FULL GLOSS(88) (SHIPPING UOM 12 OZ HAZ)
PLT00998	*	1	PLATE; APPEARANCE, TRANE 9.00 X 4.12
SCR00312	*	5	SCREW; HEX HEAD CAP SCREW 3/8-16 X 1-1/8
SCR00980	*	2	SCREW; 10-16 B HX 3/8 S XT
SCR00981	*	32	SCREW; 10-16 AB HXW 1/2 S
SCR00998	*	2	SCREW; 10-16 B HXW 1/2 S
SCR01011	*	6	SCREW; 1/4-20 C HXW 5/8 S N
SCR01051	*	1	SCREW; 10-32 MA HX 3/4 S
SCR01147	*	40	SCREW; 10-24 AB HCW 15/16 S
STR00131	*	1	STRIP; VALVE KEEPER
WAS00647	*	1	WASHER; TOOTH LOCK, #10
FLG00371	1	2	FLANGE; DUCT, 16.04 X 1.00
FLG00372	2	2	FLANGE; DUCT, 23.86 X 1.00
SUP02199	3	4	SUPPORT;BLOWER
GRM00118	4	1	GROMMET; 3/16 IN ID, NEOPRENE
GRM00133	5	2	GROMMET; SPLIT
75000641	6		HOUSING ASSEMBLY
75000638	7		CONTROL ASSEMBLY
75000639	8		COIL & FRAME ASSEMBLY
75000640	9		BLOWER, MOTOR & DISCHARGE PANEL ASSEMBLY

Housing Assembly

75000641

REV
A



*NOT ILLUSTRATED

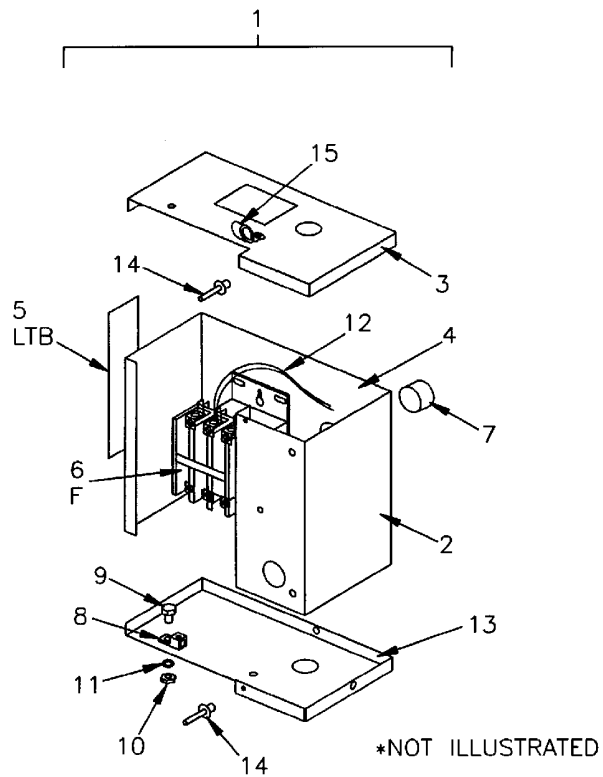
This is a typical illustration. The unit in the field may not appear exactly as shown.

Part No.	Reference No.	Quantity	Description
HUS01628	*	1	HOUSING; BLOWER, COMPLETE WITH BEARINGS, SHAFT, AND HOUSING ASSEMBLY INCLUDING WHEEL AND CUTOFF.
HUS01635	*	1	HOUSING; BLOWER, BEARING BRACKETS INCLUDED AND NOT AVAILABLE SEPARATELY.
NUT00482	*	4	NUT; MACHINE, 5/16-22
BRG00637	1	2	BEARING;BALL, ISOLATOR ASM, 1.0IN. BORE, 2.55 IN. OUTSIDE DIA.
HUS01626	2	1	HOUSING; BLOWER, INCLUDES WHEEL, CUTOFF AND BEARING BRACKETS. FOR HOUSING WITH BEARING BRACKETS ONLY, ORDER HUS01635.
COF00006	3	1	CUTOFF;
FAN00051	4	1	FAN;WHEEL,STEEL,15 DIA X 15 LG, 1.00 BORE, CCW
SHF01502	5	1	SHAFT; 23.50 LG X 1.00 OD

Control Assembly

75000638

REV
A



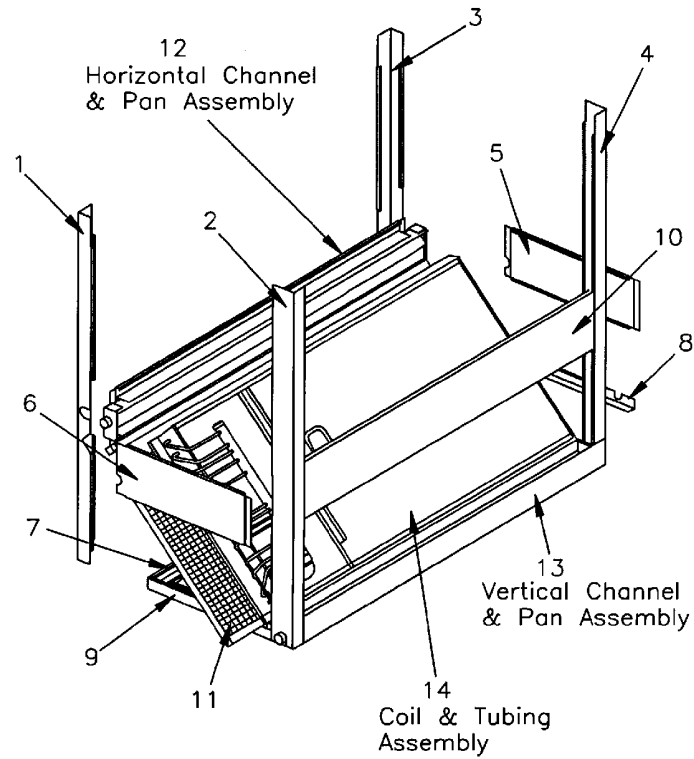
This is a typical illustration. The unit in the field may not appear exactly as shown.

Part No.	Reference No.	Quantity	Description
SCR00998	*	0	SCREW; 10-16 B HXW 1/2 S
TER00312	*	0	TERMINAL; 8IN. TIE CABLE
WAS00647	*	1	WASHER; TOOTH LOCK, #10
CPN00567	1	1	CONTROL PANEL; ASM.
PNN00540	2	1	PANEL; WRAPPER
COV01223	3	1	COVER; TOP
PLT01152	4	1	PLATE; CONTROL
TER00372	5	1	TERMINAL; BOARD
CTR00522	6	1	CONTACTOR; 30 AMP, 24V COIL, 3 POLE
BUS00314	7	1	BUSHING; SNAP
LUG00012	8	1	LUG, GROUND
SCR01058	9	1	SCREW; 10-32 MA BI 5/8 S
NUT00489	10	1	NUT; MACHINE, 10-32
WAS00647	11	1	WASHER; TOOTH LOCK, #10
WIR01719	12	1	WIRE; ASSEMBLY, CONTROL
COV01224	13	1	COVER; BOTTOM
RIV00063	14	2	RIVET; BLIND, .125 DIA X .328 LG
CMP00247	15	1	CLAMP; CABLE

Coil and Frame Assembly

75000639

REV
A



*NOT ILLUSTRATED

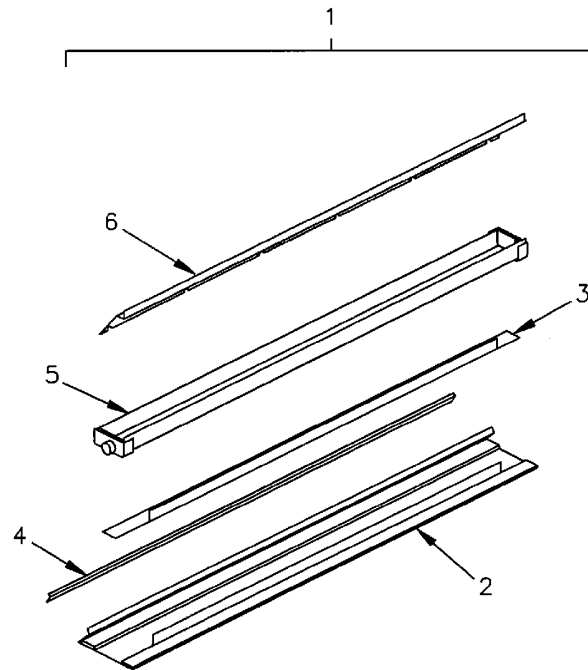
This is a typical illustration. The unit in the field may not appear exactly as shown.

Part No.	Reference No.	Quantity	Description
NUT00505	*	0	NUT; SPEED
RIV00063	*	6	RIVET; BLIND, .125 DIA X .328 LG
SCR00981	*	0	SCREW, 10-16 AB HXW 1/2 S
PNN03628	1	1	PANEL; CORNER, 52.89 X 2.80 X 2.25
PNN03630	2	1	PANEL;CORNER, INSULATED
PNN03631	3	1	PANEL;CORNER, INSULATED
PNN03633	4	1	PANEL;CORNER, INSULATED
CNL00397	5	1	CHANNEL;INSULATED
CNL00398	6	1	CHANNEL;INSULATED
ANG00329	7	1	ANGLE;INSULATED
ANG00629	8	1	ANGLE;INSULATED
ANG00630	9	1	ANGLE; INSULATED
CNL00405	10	1	CHANNEL;INSULATED
FLR00854	11	4	FILTER; 16 X 25 X 1, (ONE CNT = 20 PCS)
75000628	12		HORIZONTAL CHANNEL & PAN ASSEMBLY
75000629	13		VERTICAL CHANNEL & PAN ASSEMBLY
75000634	14		COIL & TUBING ASSEMBLY

Horizontal Channel and Pan Assembly

75000628

REV
A



*NOT ILLUSTRATED

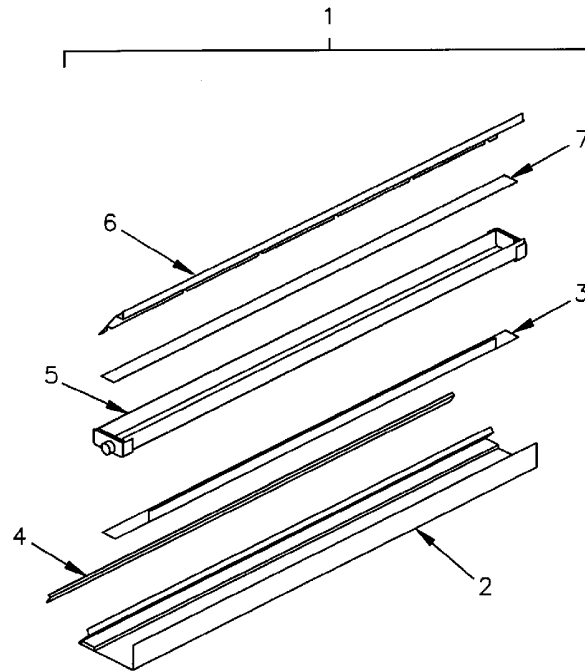
This is a typical illustration. The unit in the field may not appear exactly as shown.

Part No.	Reference No.	Quantity	Description
RIV00058	*	6	RIVET; BLIND, .156 DIA X .415 LG
RIV00063	*	3	RIVET; BLIND, .125 DIA X .328 LG
SCR00981	*	6	SCREW, 10-16 AB HXW 1/2 S
WAS00653	*	3	WASHER; STEEL, PLAIN
CNL00403	1	1	CHANNEL; ASSEMBLY, HORIZONTAL
CNL00404	2	1	CHANNEL;INSULATED
ANG00328	3	1	ANGLE;
ANG00247	4	1	ANGLE;FILTER
PAN01206	5	1	PAN; ASSEMBLY, METAL DRAIN
CNL00022	6	1	CHANNEL;FILTER

Vertical Channel and Pan Assembly

75000629

REV
A



*NOT ILLUSTRATED

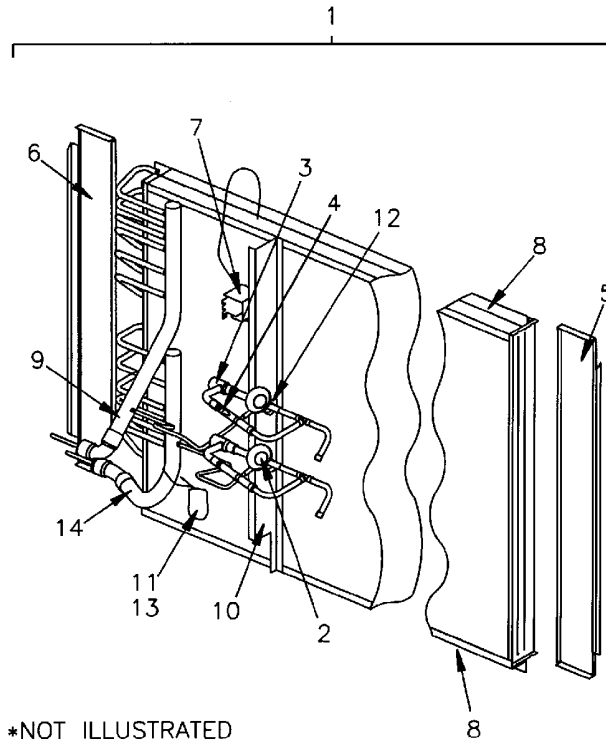
This is a typical illustration. The unit in the field may not appear exactly as shown.

Part No.	Reference No.	Quantity	Description
RIV00058	*	6	RIVET; BLIND, .156 DIA X .415 LG
RIV00063	*	3	RIVET; BLIND, .125 DIA X .328 LG
SCR00981	*	5	SCREW, 10-16 AB HXW 1/2 S
WAS00653	*	3	WASHER; STEEL, PLAIN
CNL00098	1	1	CHANNEL;& PAN ASSEMBLY, VERTICAL
CNL00078	2	1	CHANNEL; ASSEMBLY
ANG00328	3	1	ANGLE;
ANG00247	4	1	ANGLE;FILTER
PAN01206	5	1	PAN; ASSEMBLY, METAL DRAIN
CNL00022	6	1	CHANNEL;FILTER
GKT01971	7	1	GASKET;60.12 X 2.25 X .12

Coil and Tubing Assembly

75000634

REV
A



*NOT ILLUSTRATED

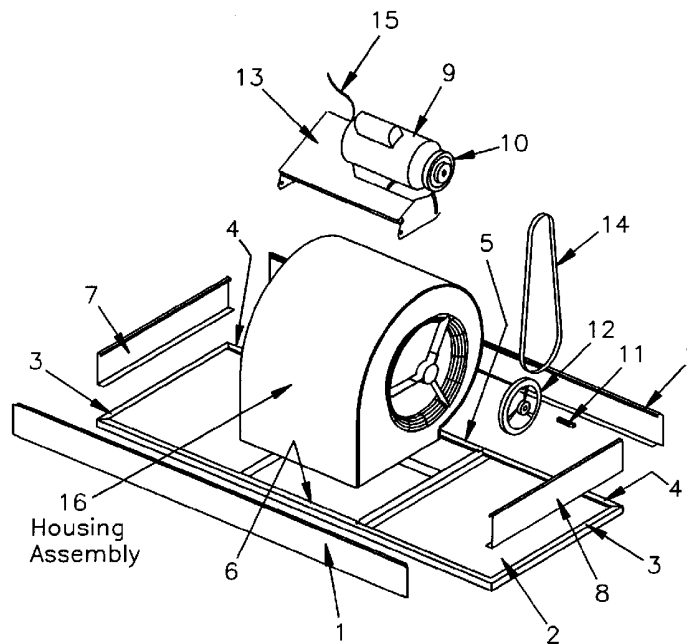
This is a typical illustration. The unit in the field may not appear exactly as shown.

Part No.	Reference No.	Quantity	Description
ANG00340	*	2	ANGLE;FLASHING, COIL
SCR00981	*	0	SCREW, 10-16 AB HXW 1/2 S
SCR00982	*	2	SCREW, 8-32 C HX 1/4 S
SCR00999	*	8	SCREW; 10-16 B HXW 3/8 S
SRP00210	*	2	STRAP, EXPANSION VALVE
TER00312	*	1	TERMINAL; 8IN. TIE CABLE
COL06431	1	1	COIL; EVAPORATOR
VAL02373	2	2	VALVE;(R-22) EXPANSION,THERMOSTATIC, ADJUSTABLE, 4.0 TON,3/8IN. INLET X 1/2IN. OUTLET,1/4IN.SAE EXTERNAL EQUALIZER,5FT.SRD REMOTE BULB 450 PSIG SWP, 300 DEG F SWT (AAEB 4HCA ODF EE 5FT S/T)
TUB07428	3	2	TUBE; ASSEMBLY, DISTRIBUTOR, OUTDOOR
VAL02189	4	2	VALVE; CHECK, 1/2 ID INLET X 1/2 OD OUTLET, 4.6 IN LENGTH
ANG00336	5	1	ANGLE;FLASHING, COIL
ANG00338	6	1	ANGLE;FLASHING, COIL
SWT00842	7	1	SWITCH; CONTROL, TEMP, SPST OPEN 25F, CLOSE 60F, 120/240 V
CNL00023	8	2	CHANNEL;COIL
MFD00617	9	1	MANIFOLD; TUBE ASSEMBLY
BRK00983	10	1	BRACKET; FLOW CONTROL SUPPORT
SRP00210	11	2	STRAP, EXPANSION VALVE
CMP00225	12	2	CLAMP; TUBE .50 DIA
PLU00421	13	3	PLUG;DRAIN PAN
MFD00619	14	1	MANIFOLD; TUBE ASSEMBLY

75000640

REV
A

Blower, Motor and Discharge Panel Assembly



*NOT ILLUSTRATED

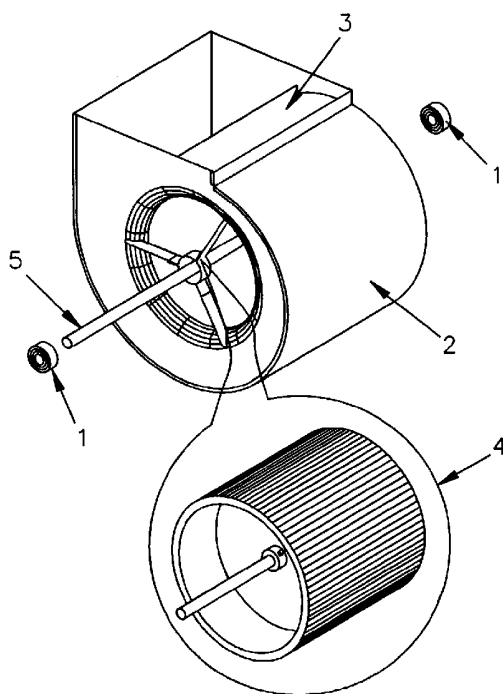
This is a typical illustration. The unit in the field may not appear exactly as shown.

Part No.	Reference No.	Quantity	Description
BLT00180	*	4	BOLT; 5/16-18 MA HX 7/8 S
BLW00384	*	1	BLOWER;& MOTOR ASSEMBLY
CON00241	*	3	CONNECTOR; WIRE
CON00251	*	3	CONNECTOR; WIRE
SCR00980	*	2	SCREW; 10-16 B HX 3/8 S XT
SCR00981	*	6	SCREW; 10-16 AB HXW 1/2 S
SCR01011	*	0	SCREW; 1/4-20 C HXW 5/8 S N
SCR01076	*	4	SCREW; 5/16-18 C HX 1 S
WAS00637	*	4	WASHER; LOCK, 5/16 IN
WAS00642	*	8	WASHER; STEEL PLAIN, 5/16 IN
PNN03996	1	2	PANEL;INSULATED
PNN03635	2	1	PANEL; DISCHARGE, INSULATED
GKT01860	3	2	GASKET;24.50 X .75 X .25
GKT01862	4	2	GASKET;21.25 X .75 X .25
GKT01861	5	1	GASKET;19 X .50 X .25
GKT01863	6	1	GASKET;61.50 X .75 X .25
PNN03975	7	1	PANEL-INSULATED
PNN03976	8	1	PANEL;INSULATED
MOT05164	9	1	MOTOR; 2.0 HP, 208-230/460/60/3, 318-415/50/3, 1725 RPM, 56 FRAME, BALL BEARING (ODM)
SHE00554	10	1	SHEAVE; 1VP44, 7/8IN. BORE
KEY00294	11	1	KEY; SQUARE MACHINE, 1 1/2 X 1/4
SHE00643	12	1	SHEAVE; AL74, 1IN. BORE
MNT01137	13	1	MOUNT; MOTOR
B00514	14	1	BELT;V, A50
CAB00135	15	1	CABLE;ASSEMBLY
75000641	16		HOUSING ASSEMBLY

Housing Assembly

75000641

REV
A



*NOT ILLUSTRATED

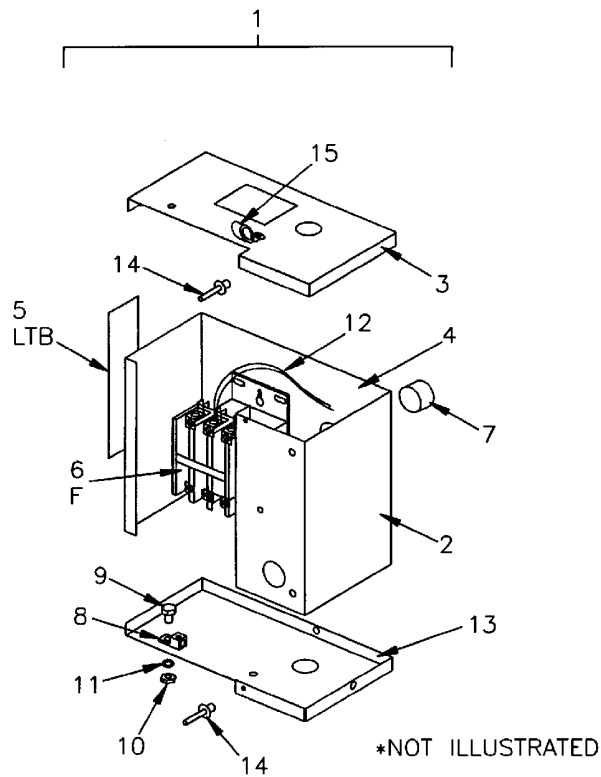
This is a typical illustration. The unit in the field may not appear exactly as shown.

Part No.	Reference No.	Quantity	Description
HUS01628	*	1	HOUSING; BLOWER, COMPLETE WITH BEARINGS, SHAFT, AND HOUSING ASSEMBLY INCLUDING WHEEL AND CUTOFF.
HUS01635	*	1	HOUSING; BLOWER, BEARING BRACKETS INCLUDED AND NOT AVAILABLE SEPARATELY.
NUT00482	*	4	NUT; MACHINE, 5/16-22
BRG00637	1	2	BEARING;BALL, ISOLATOR ASM, 1.0IN. BORE, 2.55 IN. OUTSIDE DIA.
HUS01626	2	1	HOUSING; BLOWER, INCLUDES WHEEL, CUTOFF AND BEARING BRACKETS. FOR HOUSING WITH BEARING BRACKETS ONLY, ORDER HUS01635.
COF00006	3	1	CUTOFF;
FAN00051	4	1	FAN;WHEEL,STEEL,15 DIA X 15 LG, 1.00 BORE, CCW
SHF01502	5	1	SHAFT; 23.50 LG X 1.00 OD

Control Assembly

75000638

REV
A



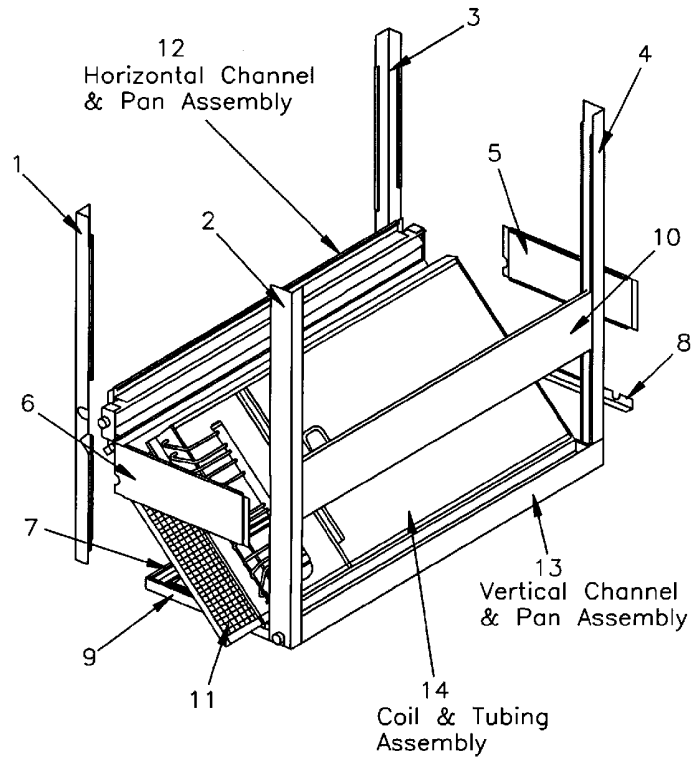
This is a typical illustration. The unit in the field may not appear exactly as shown.

Part No.	Reference No.	Quantity	Description
SCR00998	*	0	SCREW; 10-16 B HXW 1/2 S
TER00312	*	0	TERMINAL; 8IN. TIE CABLE
WAS00647	*	1	WASHER; TOOTH LOCK, #10
CPN00567	1	1	CONTROL PANEL; ASM.
PNN00540	2	1	PANEL; WRAPPER
COV01223	3	1	COVER; TOP
PLT01152	4	1	PLATE; CONTROL
TER00372	5	1	TERMINAL; BOARD
CTR00522	6	1	CONTACTOR; 30 AMP, 24V COIL, 3 POLE
BUS00314	7	1	BUSHING; SNAP
LUG00012	8	1	LUG, GROUND
SCR01058	9	1	SCREW; 10-32 MA BI 5/8 S
NUT00489	10	1	NUT; MACHINE, 10-32
WAS00647	11	1	WASHER; TOOTH LOCK, #10
WIR01719	12	1	WIRE; ASSEMBLY, CONTROL
COV01224	13	1	COVER; BOTTOM
RIV00063	14	2	RIVET; BLIND, .125 DIA X .328 LG
CMP00247	15	1	CLAMP; CABLE

Coil and Frame Assembly

75000639

REV
A



*NOT ILLUSTRATED

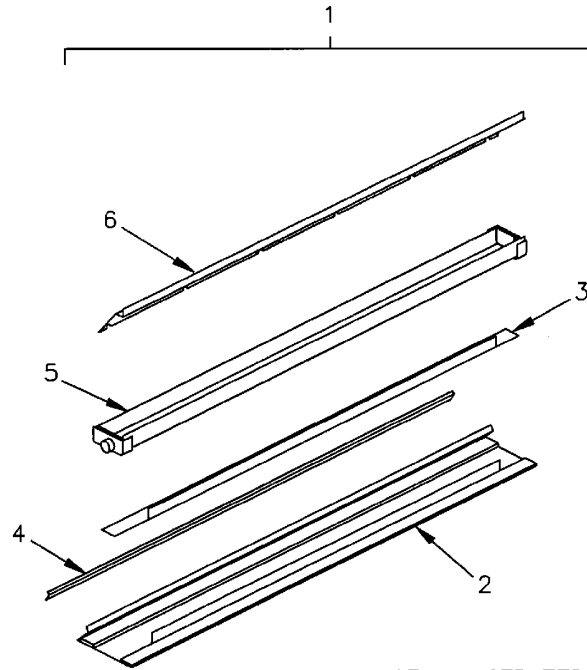
This is a typical illustration. The unit in the field may not appear exactly as shown.

Part No.	Reference No.	Quantity	Description
NUT00505	*	0	NUT; SPEED
RIV00063	*	6	RIVET; BLIND, .125 DIA X .328 LG
SCR00981	*	0	SCREW, 10-16 AB HXW 1/2 S
PNN03628	1	1	PANEL; CORNER, 52.89 X 2.80 X 2.25
PNN03630	2	1	PANEL;CORNER, INSULATED
PNN03631	3	1	PANEL;CORNER, INSULATED
PNN03633	4	1	PANEL;CORNER, INSULATED
CNL00397	5	1	CHANNEL;INSULATED
CNL00398	6	1	CHANNEL;INSULATED
ANG00329	7	1	ANGLE;INSULATED
ANG00629	8	1	ANGLE;INSULATED
ANG00630	9	1	ANGLE; INSULATED
CNL00405	10	1	CHANNEL;INSULATED
FLR00854	11	4	FILTER; 16 X 25 X 1, (ONE CNT = 20 PCS)
75000628	12		HORIZONTAL CHANNEL & PAN ASSEMBLY
75000629	13		VERTICAL CHANNEL & PAN ASSEMBLY
75000634	14		COIL & TUBING ASSEMBLY

Horizontal Channel and Pan Assembly

75000628

REV
A



*NOT ILLUSTRATED

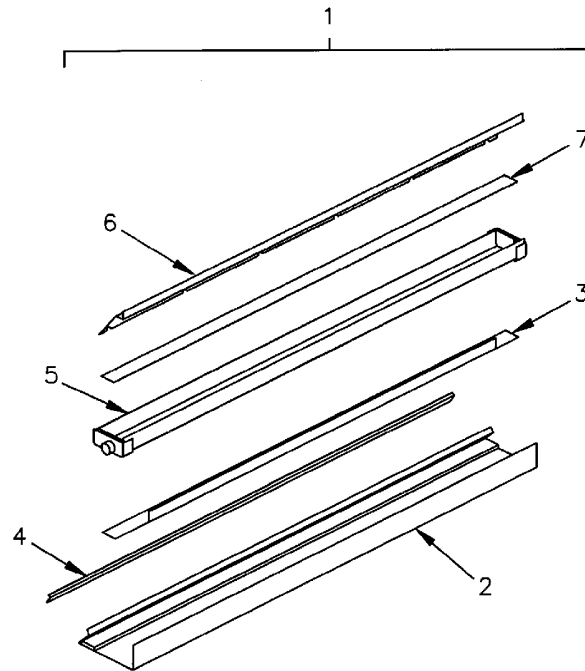
This is a typical illustration. The unit in the field may not appear exactly as shown.

Part No.	Reference No.	Quantity	Description
RIV00058	*	6	RIVET; BLIND, .156 DIA X .415 LG
RIV00063	*	3	RIVET; BLIND, .125 DIA X .328 LG
SCR00981	*	6	SCREW, 10-16 AB HXW 1/2 S
WAS00653	*	3	WASHER; STEEL, PLAIN
CNL00403	1	1	CHANNEL; ASSEMBLY, HORIZONTAL
CNL00404	2	1	CHANNEL;INSULATED
ANG00328	3	1	ANGLE;
ANG00247	4	1	ANGLE;FILTER
PAN01206	5	1	PAN; ASSEMBLY, METAL DRAIN
CNL00022	6	1	CHANNEL;FILTER

Vertical Channel and Pan Assembly

75000629

REV
A



*NOT ILLUSTRATED

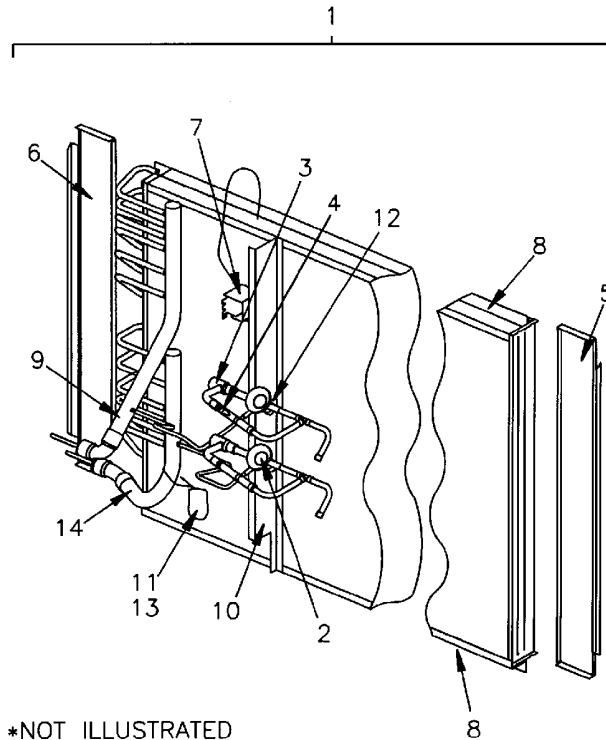
This is a typical illustration. The unit in the field may not appear exactly as shown.

Part No.	Reference No.	Quantity	Description
RIV00058	*	6	RIVET; BLIND, .156 DIA X .415 LG
RIV00063	*	3	RIVET; BLIND, .125 DIA X .328 LG
SCR00981	*	5	SCREW, 10-16 AB HXW 1/2 S
WAS00653	*	3	WASHER; STEEL, PLAIN
CNL00098	1	1	CHANNEL;& PAN ASSEMBLY, VERTICAL
CNL00078	2	1	CHANNEL; ASSEMBLY
ANG00328	3	1	ANGLE;
ANG00247	4	1	ANGLE;FILTER
PAN01206	5	1	PAN; ASSEMBLY, METAL DRAIN
CNL00022	6	1	CHANNEL;FILTER
GKT01971	7	1	GASKET;60.12 X 2.25 X .12

Coil and Tubing Assembly

75000634

REV
A



*NOT ILLUSTRATED

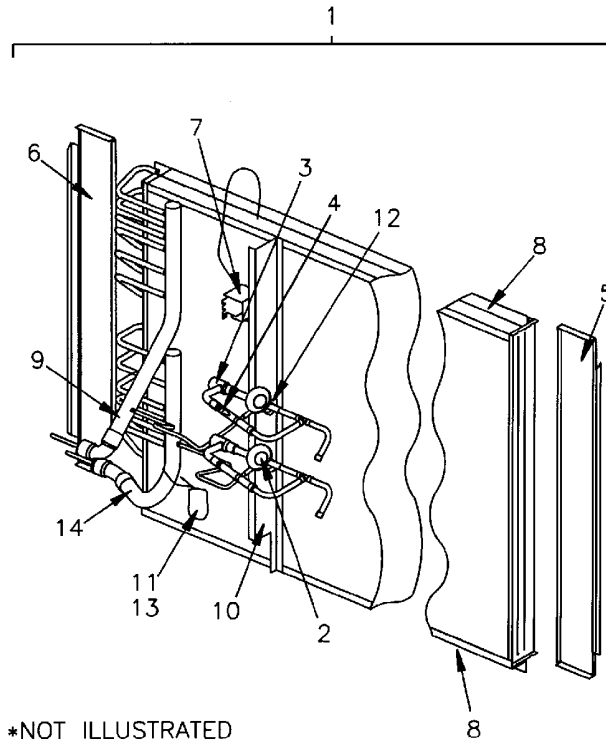
This is a typical illustration. The unit in the field may not appear exactly as shown.

Part No.	Reference No.	Quantity	Description
ANG00340	*	2	ANGLE;FLASHING, COIL
SCR00981	*	0	SCREW, 10-16 AB HXW 1/2 S
SCR00982	*	2	SCREW, 8-32 C HX 1/4 S
SCR00999	*	8	SCREW; 10-16 B HXW 3/8 S
SRP00210	*	2	STRAP, EXPANSION VALVE
TER00312	*	1	TERMINAL; 8IN. TIE CABLE
COL06431	1	1	COIL; EVAPORATOR
VAL02373	2	2	VALVE;(R-22) EXPANSION,THERMOSTATIC, ADJUSTABLE, 4.0 TON,3/8IN. INLET X 1/2IN. OUTLET,1/4IN.SAE EXTERNAL EQUALIZER,5FT.SRD REMOTE BULB 450 PSIG SWP, 300 DEG F SWT (AAEB 4HCA ODF EE 5FT S/T)
TUB07428	3	2	TUBE; ASSEMBLY, DISTRIBUTOR, OUTDOOR
VAL02189	4	2	VALVE; CHECK, 1/2 ID INLET X 1/2 OD OUTLET, 4.6 IN LENGTH
ANG00336	5	1	ANGLE;FLASHING, COIL
ANG00338	6	1	ANGLE;FLASHING, COIL
SWT00842	7	1	SWITCH; CONTROL, TEMP, SPST OPEN 25F, CLOSE 60F, 120/240 V
CNL00023	8	2	CHANNEL;COIL
MFD00617	9	1	MANIFOLD; TUBE ASSEMBLY
BRK00983	10	1	BRACKET; FLOW CONTROL SUPPORT
SRP00210	11	2	STRAP, EXPANSION VALVE
CMP00225	12	2	CLAMP; TUBE .50 DIA
PLU00421	13	3	PLUG;DRAIN PAN
MFD00619	14	1	MANIFOLD; TUBE ASSEMBLY

Coil and Tubing Assembly

75000634

REV
A



*NOT ILLUSTRATED

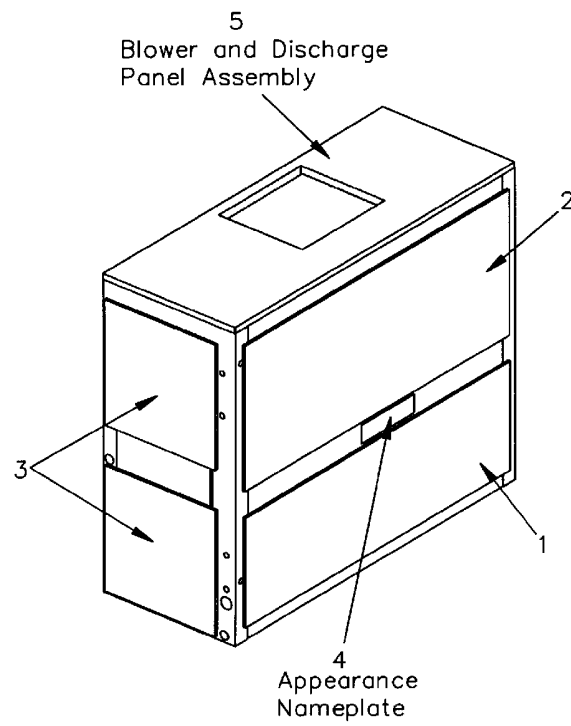
This is a typical illustration. The unit in the field may not appear exactly as shown.

Part No.	Reference No.	Quantity	Description
ANG00340	*	2	ANGLE;FLASHING, COIL
SCR00981	*	0	SCREW, 10-16 AB HXW 1/2 S
SCR00982	*	2	SCREW, 8-32 C HX 1/4 S
SCR00999	*	8	SCREW; 10-16 B HXW 3/8 S
SRP00210	*	2	STRAP, EXPANSION VALVE
TER00312	*	1	TERMINAL; 8IN. TIE CABLE
COL06431	1	1	COIL; EVAPORATOR
VAL02373	2	2	VALVE;(R-22) EXPANSION,THERMOSTATIC, ADJUSTABLE, 4.0 TON,3/8IN. INLET X 1/2IN. OUTLET,1/4IN.SAE EXTERNAL EQUALIZER,5FT.SRD REMOTE BULB 450 PSIG SWP, 300 DEG F SWT (AAEB 4HCA ODF EE 5FT S/T)
TUB07428	3	2	TUBE; ASSEMBLY, DISTRIBUTOR, OUTDOOR
VAL02189	4	2	VALVE; CHECK, 1/2 ID INLET X 1/2 OD OUTLET, 4.6 IN LENGTH
ANG00336	5	1	ANGLE;FLASHING, COIL
ANG00338	6	1	ANGLE;FLASHING, COIL
SWT00842	7	1	SWITCH; CONTROL, TEMP, SPST OPEN 25F, CLOSE 60F, 120/240 V
CNL00023	8	2	CHANNEL;COIL
MFD00617	9	1	MANIFOLD; TUBE ASSEMBLY
BRK00983	10	1	BRACKET; FLOW CONTROL SUPPORT
SRP00210	11	2	STRAP, EXPANSION VALVE
CMP00225	12	2	CLAMP; TUBE .50 DIA
PLU00421	13	3	PLUG;DRAIN PAN
MFD00619	14	1	MANIFOLD; TUBE ASSEMBLY

Panel Assemblies

75000626

REV
A



*NOT ILLUSTRATED

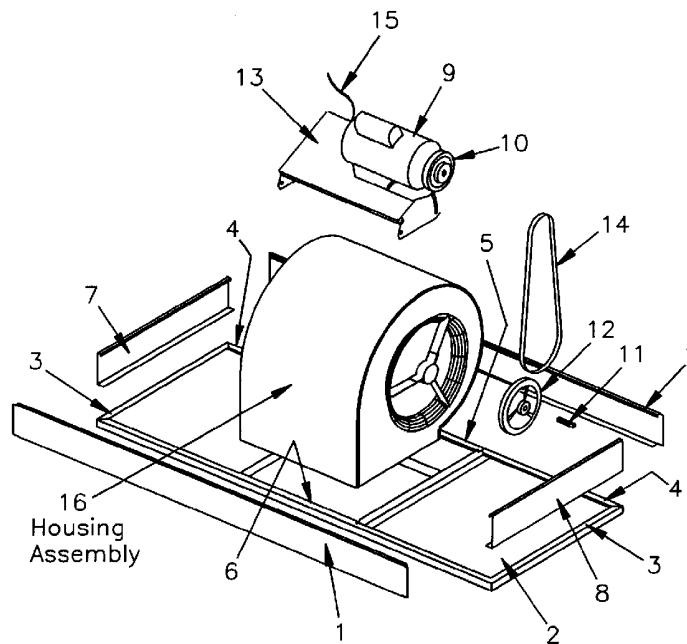
This is a typical illustration. The unit in the field may not appear exactly as shown.

Part No.	Reference No.	Quantity	Description
PAI00074	*	1	PAINT; SPRAY, SLATE GREY, FULL GLOSS(88) (SHIPPING UOM 12 OZ HAZ)
PNN00500	1	2	PANEL; BOTTOM ACCESS, 59.98 X 18.50
PNN03634	2	2	PANEL; TOP, 59.98 X 24.70
PNN00542	3	4	PANEL; ACCESS, BOTTOM
PLT00998	4	1	PLATE; APPEARANCE, TRANE 9.00 X 4.12
75000640	5		BLOWER & DISCHARGE PANEL ASSEMBLY

75000640

REV
A

Blower, Motor and Discharge Panel Assembly



*NOT ILLUSTRATED

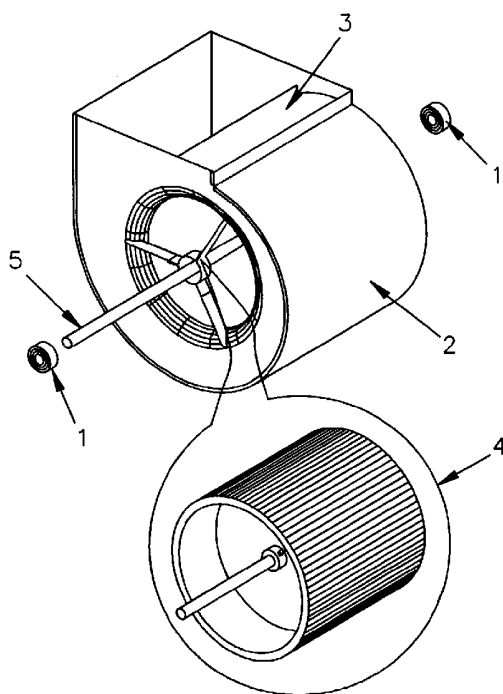
This is a typical illustration. The unit in the field may not appear exactly as shown.

Part No.	Reference No.	Quantity	Description
BLT00180	*	4	BOLT; 5/16-18 MA HX 7/8 S
BLW00384	*	1	BLOWER;& MOTOR ASSEMBLY
CON00241	*	3	CONNECTOR; WIRE
CON00251	*	3	CONNECTOR; WIRE
SCR00980	*	2	SCREW; 10-16 B HX 3/8 S XT
SCR00981	*	6	SCREW; 10-16 AB HXW 1/2 S
SCR01011	*	0	SCREW; 1/4-20 C HXW 5/8 S N
SCR01076	*	4	SCREW; 5/16-18 C HX 1 S
WAS00637	*	4	WASHER; LOCK, 5/16 IN
WAS00642	*	8	WASHER; STEEL PLAIN, 5/16 IN
PNN03996	1	2	PANEL;INSULATED
PNN03635	2	1	PANEL; DISCHARGE, INSULATED
GKT01860	3	2	GASKET;24.50 X .75 X .25
GKT01862	4	2	GASKET;21.25 X .75 X .25
GKT01861	5	1	GASKET;19 X .50 X .25
GKT01863	6	1	GASKET;61.50 X .75 X .25
PNN03975	7	1	PANEL-INSULATED
PNN03976	8	1	PANEL;INSULATED
MOT05164	9	1	MOTOR; 2.0 HP, 208-230/460/60/3, 318-415/50/3, 1725 RPM, 56 FRAME, BALL BEARING (ODM)
SHE00554	10	1	SHEAVE; 1VP44, 7/8IN. BORE
KEY00294	11	1	KEY; SQUARE MACHINE, 1 1/2 X 1/4
SHE00643	12	1	SHEAVE; AL74, 1IN. BORE
MNT01137	13	1	MOUNT; MOTOR
B00514	14	1	BELT;V, A50
CAB00135	15	1	CABLE;ASSEMBLY
75000641	16		HOUSING ASSEMBLY

Housing Assembly

75000641

REV
A



*NOT ILLUSTRATED

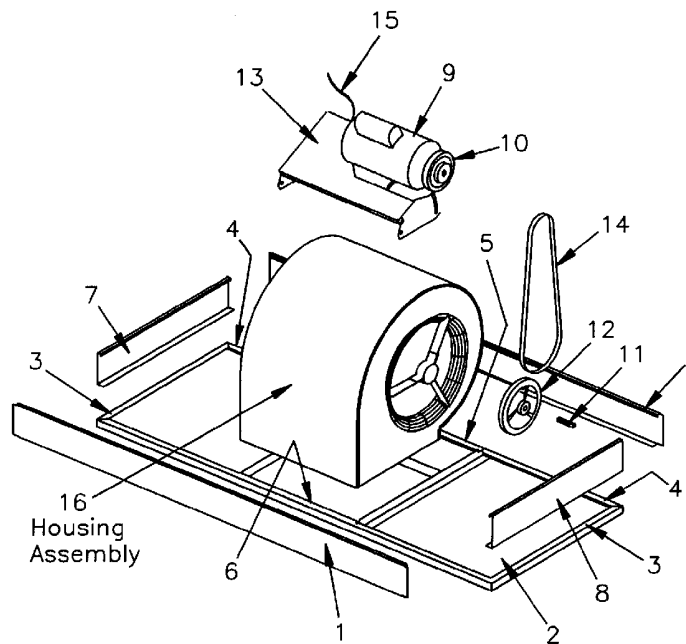
This is a typical illustration. The unit in the field may not appear exactly as shown.

Part No.	Reference No.	Quantity	Description
HUS01628	*	1	HOUSING; BLOWER, COMPLETE WITH BEARINGS, SHAFT, AND HOUSING ASSEMBLY INCLUDING WHEEL AND CUTOFF.
HUS01635	*	1	HOUSING; BLOWER, BEARING BRACKETS INCLUDED AND NOT AVAILABLE SEPARATELY.
NUT00482	*	4	NUT; MACHINE, 5/16-22
BRG00637	1	2	BEARING;BALL, ISOLATOR ASM, 1.0IN. BORE, 2.55 IN. OUTSIDE DIA.
HUS01626	2	1	HOUSING; BLOWER, INCLUDES WHEEL, CUTOFF AND BEARING BRACKETS. FOR HOUSING WITH BEARING BRACKETS ONLY, ORDER HUS01635.
COF00006	3	1	CUTOFF;
FAN00051	4	1	FAN;WHEEL,STEEL,15 DIA X 15 LG, 1.00 BORE, CCW
SHF01502	5	1	SHAFT; 23.50 LG X 1.00 OD

75000640

REV
A

Blower, Motor and Discharge Panel Assembly



*NOT ILLUSTRATED

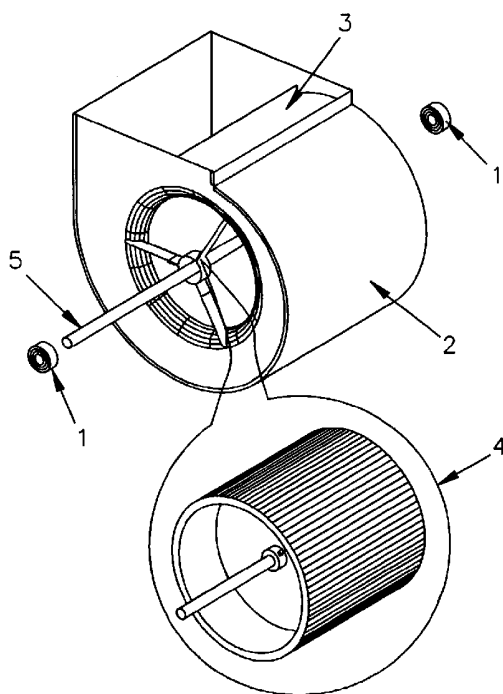
This is a typical illustration. The unit in the field may not appear exactly as shown.

Part No.	Reference No.	Quantity	Description
BLT00180	*	4	BOLT; 5/16-18 MA HX 7/8 S
BLW00384	*	1	BLOWER;& MOTOR ASSEMBLY
CON00241	*	3	CONNECTOR; WIRE
CON00251	*	3	CONNECTOR; WIRE
SCR00980	*	2	SCREW; 10-16 B HX 3/8 S XT
SCR00981	*	6	SCREW; 10-16 AB HXW 1/2 S
SCR01011	*	0	SCREW; 1/4-20 C HXW 5/8 S N
SCR01076	*	4	SCREW; 5/16-18 C HX 1 S
WAS00637	*	4	WASHER; LOCK, 5/16 IN
WAS00642	*	8	WASHER; STEEL PLAIN, 5/16 IN
PNN03996	1	2	PANEL;INSULATED
PNN03635	2	1	PANEL; DISCHARGE, INSULATED
GKT01860	3	2	GASKET;24.50 X .75 X .25
GKT01862	4	2	GASKET;21.25 X .75 X .25
GKT01861	5	1	GASKET;19 X .50 X .25
GKT01863	6	1	GASKET;61.50 X .75 X .25
PNN03975	7	1	PANEL-INSULATED
PNN03976	8	1	PANEL;INSULATED
MOT05164	9	1	MOTOR; 2.0 HP, 208-230/460/60/3, 318-415/50/3, 1725 RPM, 56 FRAME, BALL BEARING (ODM)
SHE00554	10	1	SHEAVE; 1VP44, 7/8IN. BORE
KEY00294	11	1	KEY; SQUARE MACHINE, 1 1/2 X 1/4
SHE00643	12	1	SHEAVE; AL74, 1IN. BORE
MNT01137	13	1	MOUNT; MOTOR
B00514	14	1	BELT;V, A50
CAB00135	15	1	CABLE;ASSEMBLY
75000641	16		HOUSING ASSEMBLY

Housing Assembly

75000641

REV
A



*NOT ILLUSTRATED

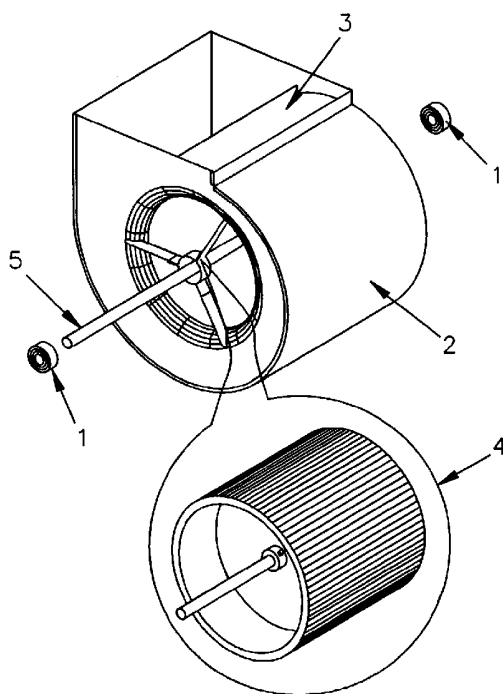
This is a typical illustration. The unit in the field may not appear exactly as shown.

Part No.	Reference No.	Quantity	Description
HUS01628	*	1	HOUSING; BLOWER, COMPLETE WITH BEARINGS, SHAFT, AND HOUSING ASSEMBLY INCLUDING WHEEL AND CUTOFF.
HUS01635	*	1	HOUSING; BLOWER, BEARING BRACKETS INCLUDED AND NOT AVAILABLE SEPARATELY.
NUT00482	*	4	NUT; MACHINE, 5/16-22
BRG00637	1	2	BEARING;BALL, ISOLATOR ASM, 1.0IN. BORE, 2.55 IN. OUTSIDE DIA.
HUS01626	2	1	HOUSING; BLOWER, INCLUDES WHEEL, CUTOFF AND BEARING BRACKETS. FOR HOUSING WITH BEARING BRACKETS ONLY, ORDER HUS01635.
COF00006	3	1	CUTOFF;
FAN00051	4	1	FAN;WHEEL,STEEL,15 DIA X 15 LG, 1.00 BORE, CCW
SHF01502	5	1	SHAFT; 23.50 LG X 1.00 OD

Housing Assembly

75000641

REV
A



*NOT ILLUSTRATED

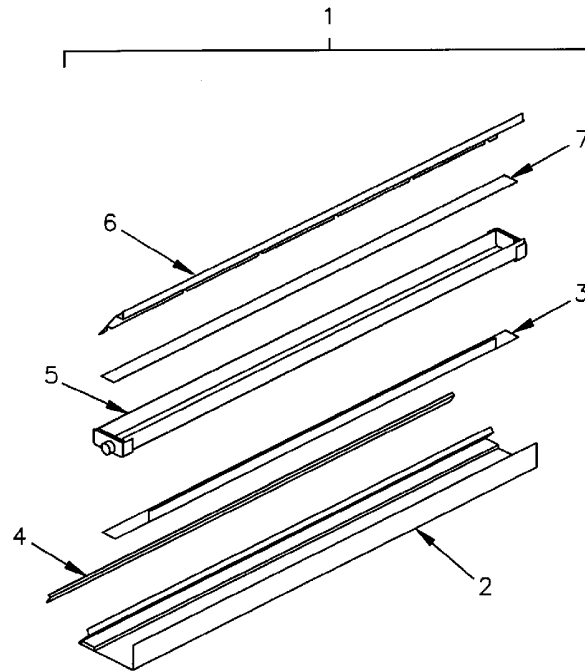
This is a typical illustration. The unit in the field may not appear exactly as shown.

Part No.	Reference No.	Quantity	Description
HUS01628	*	1	HOUSING; BLOWER, COMPLETE WITH BEARINGS, SHAFT, AND HOUSING ASSEMBLY INCLUDING WHEEL AND CUTOFF.
HUS01635	*	1	HOUSING; BLOWER, BEARING BRACKETS INCLUDED AND NOT AVAILABLE SEPARATELY.
NUT00482	*	4	NUT; MACHINE, 5/16-22
BRG00637	1	2	BEARING;BALL, ISOLATOR ASM, 1.0IN. BORE, 2.55 IN. OUTSIDE DIA.
HUS01626	2	1	HOUSING; BLOWER, INCLUDES WHEEL, CUTOFF AND BEARING BRACKETS. FOR HOUSING WITH BEARING BRACKETS ONLY, ORDER HUS01635.
COF00006	3	1	CUTOFF;
FAN00051	4	1	FAN;WHEEL,STEEL,15 DIA X 15 LG, 1.00 BORE, CCW
SHF01502	5	1	SHAFT; 23.50 LG X 1.00 OD

Vertical Channel and Pan Assembly

75000629

REV
A



*NOT ILLUSTRATED

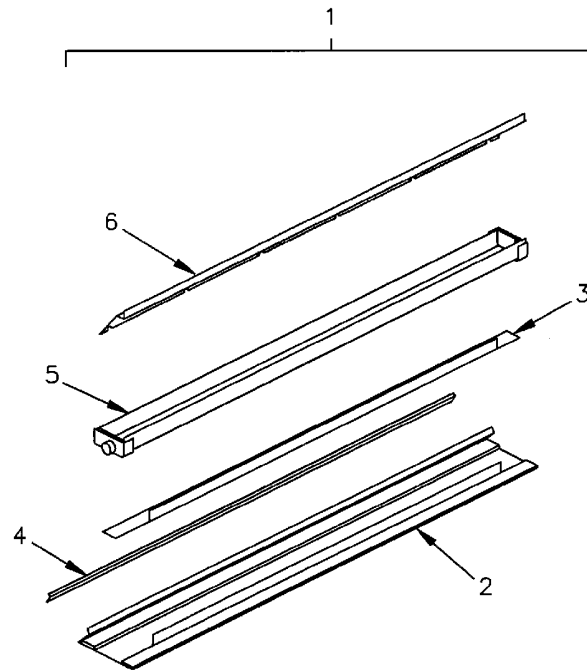
This is a typical illustration. The unit in the field may not appear exactly as shown.

Part No.	Reference No.	Quantity	Description
RIV00058	*	6	RIVET; BLIND, .156 DIA X .415 LG
RIV00063	*	3	RIVET; BLIND, .125 DIA X .328 LG
SCR00981	*	5	SCREW, 10-16 AB HXW 1/2 S
WAS00653	*	3	WASHER; STEEL, PLAIN
CNL00098	1	1	CHANNEL;& PAN ASSEMBLY, VERTICAL
CNL00078	2	1	CHANNEL; ASSEMBLY
ANG00328	3	1	ANGLE;
ANG00247	4	1	ANGLE;FILTER
PAN01206	5	1	PAN; ASSEMBLY, METAL DRAIN
CNL00022	6	1	CHANNEL;FILTER
GKT01971	7	1	GASKET;60.12 X 2.25 X .12

Horizontal Channel and Pan Assembly

75000628

REV
A



*NOT ILLUSTRATED

This is a typical illustration. The unit in the field may not appear exactly as shown.

Part No.	Reference No.	Quantity	Description
RIV00058	*	6	RIVET; BLIND, .156 DIA X .415 LG
RIV00063	*	3	RIVET; BLIND, .125 DIA X .328 LG
SCR00981	*	6	SCREW, 10-16 AB HXW 1/2 S
WAS00653	*	3	WASHER; STEEL, PLAIN
CNL00403	1	1	CHANNEL; ASSEMBLY, HORIZONTAL
CNL00404	2	1	CHANNEL;INSULATED
ANG00328	3	1	ANGLE;
ANG00247	4	1	ANGLE;FILTER
PAN01206	5	1	PAN; ASSEMBLY, METAL DRAIN
CNL00022	6	1	CHANNEL;FILTER