

Vinyl Siding Tools

- ***Andy Snip® Multi-Purpose***
- ***Ultra Lightweight Snip***
- ***Sideswiper II®***
- ***The Sider®***
- ***Hand Punches***
- ***Notchers***
- ***Vinyl Siding Saw Blades***



***Complete Solutions
for Installation and
Removal of Vinyl Siding***




MV12

A lightweight 12 in. (31 cm) aluminum handled combination snip features a 3 in. (76 mm) cutting depth. Inset steel blades possess a knife-like edge that produces a smooth slicing action for cutting thick or layered vinyl and a variety of other flexible non-ferrous materials.

Ultra sharp high carbon steel blades cut like a knife and are easily replaceable on the job!



Heavy Vinyl Siding



Aluminum Trim Coil



Landscape Edging



Vinyl Flooring



Carpet



Leather

Catalog Number	Description	Length of Cut in. (mm)	Tool Length in. (cm)	Net Wt. oz. (g)	Net Wt. lbs. (kg)
MV12	Non-Ferrous Andy Snip	3 (76.2)	12 (31)	20 (567)	—
Replacement Blades for MV12					
MV12RB	Carbon Steel Replacement Blades				



Heavyweight Attitude at less than 10 ounces!

The vinyl-cutting blade features an extremely sharp knife-like bevel for easy starting and cutting in the thickest, hardest vinyl and other non-ferrous materials or fabrics, including trim coil.

- Strong, lightweight 10 in. (254 mm) polymer frame
- Easy-to-grasp, protective handle loops
- Big 3 in. (76 mm) long controlled cut
- Designed for all weather conditions
- Replacement blades are easily installed.




ULV10



Worry-Free Blade Changes! Malco Ultra Lightweight Snips utilize a fully threaded brass insert thermally anchored in the blade area of the polymer frame for holding power and no loss of thread integrity.

Catalog Number	Description	Length of Cut in. (mm)	Tool Length in. (cm)	Net Wt. oz. (g)	Replacement Blades
ULV10	Vinyl Cutting, Combination Snip	3 (76)	10 (254)	9.5 (254)	ULV10RB



SideSwiper® II

Siding Removal Tool for Vinyl Siding

SideSwiper model SRT2 combines the comfort and added leverage of a straight handle with the smooth unlocking of a burr free hook. The blade is angled from the bottom plane of the handle and allows the user to keep the wrist straight while keeping knuckles well above the work. Blade surface finishing and plating ensures that the hook will not cut into the vinyl material. Additional comfort and control is achieved with a non-slip textured handle grip. The gripping surface will not become slick from moisture, and the form fitting, plastisol dip process bonds the grip for the life of the tool.

Durable one piece spring steel construction is virtually indestructible. A handy oversize hang hole in handle accommodates a 1/4 in. (6.4 mm) peg hook.



Save Time!
With a smooth unlocking motion, an easy-to-grasp straight handle and a non-slip textured grip, this handy tool will save you time by cleanly removing vinyl siding!

- 1. INSERTION: Wedge tip of blade under overlapping panel and hook onto the back lip of buttlock.
- 2. UNLOCKING: Pulling lip downward, slide the tool along length of panel to unlock and expose nail row of panel to be removed.
- 3. PANEL REPLACEMENT: Lock and nail replacement panel into place. Use tool to relock overlapping panel. Pull down on panel lip and press it into lock of replacement panel below.



THE SIDER®

Marking & Cutting Templates for Vinyl Siding

Save up to three profitable hours on each job with the innovative Sider. It works quickly and accurately, replacing chalk lines, squares and straight edges. Use it as a scribe or square to mark or score precise lines. Or go straight to cutting with your utility knife in the precisely marked 1/8 in. (3.2 mm) holes. The Sider comes in three sizes to match popular siding profiles and features durable 18-gauge (1.22 mm) stainless steel construction. It's one smart little tool for even the biggest siding jobs.



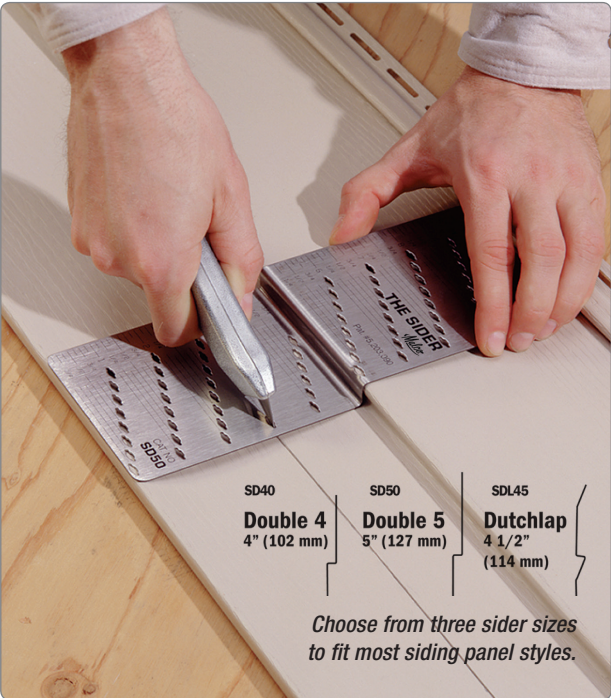
Scribe it



Square it



Cut it!



Catalog Number	Description	Tool Length. in. (mm.)	Net Wt. oz. (g)
SRT2	SideSwiper II Siding Removal Tool	6-1/4 (159)	3.0 (85)
SRT2B	SideSwiper II Siding Removal Tool Bulk (25)	—	—
SD40	The Sider Double 4	—	7.0 (199)
SD50	The Sider Double 5	—	8.0 (227)
SDL45	The Sider Dutchlapp 4-1/2	—	7.0 (199)

- SD40 Double 4 4" (102 mm)
- SD50 Double 5 5" (127 mm)
- SDL45 Dutchlapp 4 1/2" (114 mm)

Choose from three sider sizes to fit most siding panel styles.



Snap Lock Punch

Snap lock plastic skirting and siding to finishing trim.

Snap lock plastic skirting and siding to finishing trim. Makes tabs in the cut edge of siding panel used as a finishing course at top of wall or below window. Tabs lock into utility trim.

Punch raises a high projection to compensate for natural relaxation of vinyl plastic. It also works well on aluminum siding but is not recommended for steel.



SL5



Economical and Rugged

Note: The SL5 should not be used when PERMATABS are required to snap into finished trim. For this application we recommend using the Malco SL1R or SL2R Snap Lock Punch. PERMATABS is a trademark of C & H Enterprises. Not Recommended for use below 32° F (0° C).



Snap Lock Punch



SL8R



Designed for Vinyl Only

For securing vinyl skirting and siding to finishing trim.

The SL8R produces wider, more secure locking tab projections. Tabs grip a greater surface area and guard against dislodging due to relaxation of vinyl from heat. SL8R installations also resist blowout during times of high pressure and wind. Constructed of steel stampings and rugged investment cast alloy steel jaws, with nickel plate and black oxide finishes. Ergonomic Redline Handles with unique one-hand operation latch offer maximum compound leverage performance and natural fit and feel. *Not Recommended for use below 32° F (0° C).*



Nail Hole Slot Punch



NHP1R



Add accurate nail slots quickly and easily!

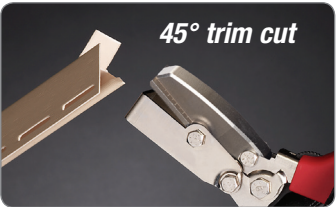
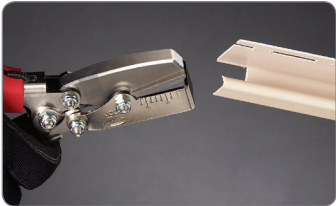
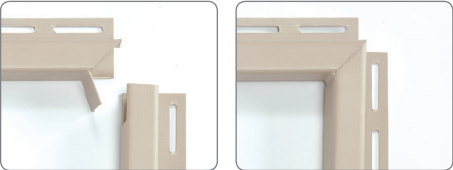
The NHP1R punches a generous 5/32 x 3/4 in. (4.0 to 19.1 mm) horizontal slot for adding or elongating nail holes in vinyl and .019 in. (0.48 mm) aluminum siding to accommodate irregular stud spacing. Ergonomic Redline Handles with unique one-hand operation latch offer maximum compound leverage performance and natural fit and feel.

Catalog Number	Description	Throat Depth in. (mm)	Slot in. (mm)	Length in. (mm)	Net Wt. oz. (g)
SL5	Snap Lock Punch	3/8 (9.5)	—	9 (229)	12 (340)
NHP1R	Nail Hole Slot Punch	5/8 (15.9)	5/32 x 3/4 (4.0 x 19.1)	8-1/2 (216)	16 (454)
SL8R	Snap Lock Punch	1/2 (12.7)	—	8-1/2 (216)	16 (454)
Replacement Spring for Hand Tools					
5018	Fits NHP1R, SL8R				



For Notches & Drain Tabs
J-Channel Cutters are available for 1/2, 5/8 and 3/4 in. (12.7, 15.9 and 19.1 mm) channel.

Use a versatile Malco J-Channel Cutter to make drain tabs, downstream notch cutouts and miter trim cuts in vinyl channel. Available in three sizes for 1/2 inch (12.7 mm) channel, 5/8 inch (15.9 mm) channel and 3/4 inch (19.1 mm) channel. Tool operation is fast and easy! Light hand pressure produces a single handle click signal to ensure perfect drain tabs every time. Graduations on the upper jaw easily gauge tab or notch depths from 3/8 to 1-1/4 in. (9.5 – 31.2 mm). Use either side of the jaws to cut a 45-degree miter for a professional finished look. Hardened all-steel construction with rust resistant nickel chrome and black oxide finishes ensures long service life.



45° trim cut

Depth Gauge
Use graduations on jaw to gauge cutting depths of 3/8 to 1-1/4 in. (9.5 to 31.2 mm)

Make drain tabs, downstream Notch cutouts and 45-degree miter trim cuts with one tool!
Easy one-hand operation!



JCCR
5/8 in. (15.9 mm)
J-Channel



JCC50R
1/2 in. (12.7 mm)
J-Channel



JCC75R
3/4 in. (19.1 mm)
J-Channel

Catalog Number	Description	Application	Tool Length, in. (mm.)	Net Wt. oz. (g)
JCC50R	J-Channel Cutter 1/2 in. (12.7 mm)	J-Channel	8-7/8 (225)	16 (454)
JCCR	J-Channel Cutter 5/8 in. (15.9 mm)	J-Channel	8-7/8 (225)	16 (454)
JCC75R	J-Channel Cutter 3/4 in. (19.1 mm)	J-Channel	8-7/8 (225)	16 (454)
Replacement Spring for Hand Tools				
5018	Fits All JCC Models on this Page			

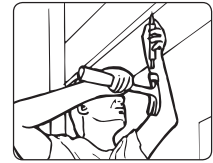
Drive trim nails into soffit, fascia, and other finishing trim without denting or marring material.

All-steel nose and aluminum tail piece directs weight of this punch to the working end when grasping or starting a nail. Accommodates up to 1-1/4 in. (31.2 mm) standard trim nails. Nose fits into 1/2 in. (12.7 mm) J channel.

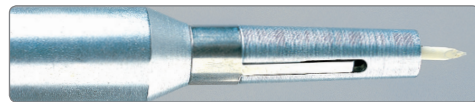
TNP2S



TNP2R



Avoid the awkwardness and strain of balancing nails in the nose of the punch or holding back the drive pin while standing on a ladder or reaching out to nail. The new retaining clip also minimizes scrapes and dents caused by nail slippage or improper setting depth.



Nail retaining clip holds nail securely while positioning punch.

"Pocket Sized"
TNP3S

Tool will hold and install standard 1-1/4 in. (31.2 mm) trim nails. Small size allows easy access to recesses of formed trim pieces. Hex collar prevents rolling.



Vinyl Cutting Circular Saw Blades



VCB1

Versatile 7-1/4 in. (184 mm) blade for smooth cutting in vinyl fencing / siding and plastic trim.



VCB2EV

Big 10 in. (250 mm) circular blade fits most power miters for making ultra smooth cuts.

Catalog Number	Description	Diameter in. (mm)	RPM	Teeth	Arbor in. (mm)
VCB1	Vinyl Cutting Saw Blade	7-1/4 (184)	6500	186	5/8 (15.875)
VCB2EV	Vinyl Cutting Circular Saw Blade	10 (250)	6500	248	5/8 (15.875)

Catalog Number	Description	Tool Length. in. (mm.)	Net Wt. oz. (g)
TNP2S	Trim Nail Punch	6-3/4 (171)	6 (170)
TNP2R	Trim Nail Punch with Clip	6-3/4 (171)	6 (170)
TNP3S	Trim Nail Punch	5 (127)	2 (57)
TNP3SB	Trim Nail Punch Bulk (24)	—	—
TNP3SH	Trim Nail Punch Bulk (100)	—	—
TNP2CL	Replacement Clip for TNP2R	—	—