

# PRODUCT INFORMATION PACKET



Model No: H667V1

Catalog No: H667V1

1.0 HP Condenser Fans HVAC/R Motor, 3 phase, 1200 RPM, 200-230/460 V, 56Y Frame, OPAO  
Condenser Fans Motors



Regal and Century are trademarks of Regal Rexnord Corporation or one of its affiliated companies.  
©2021 Regal Rexnord Corporation, All Rights Reserved. MC017097E





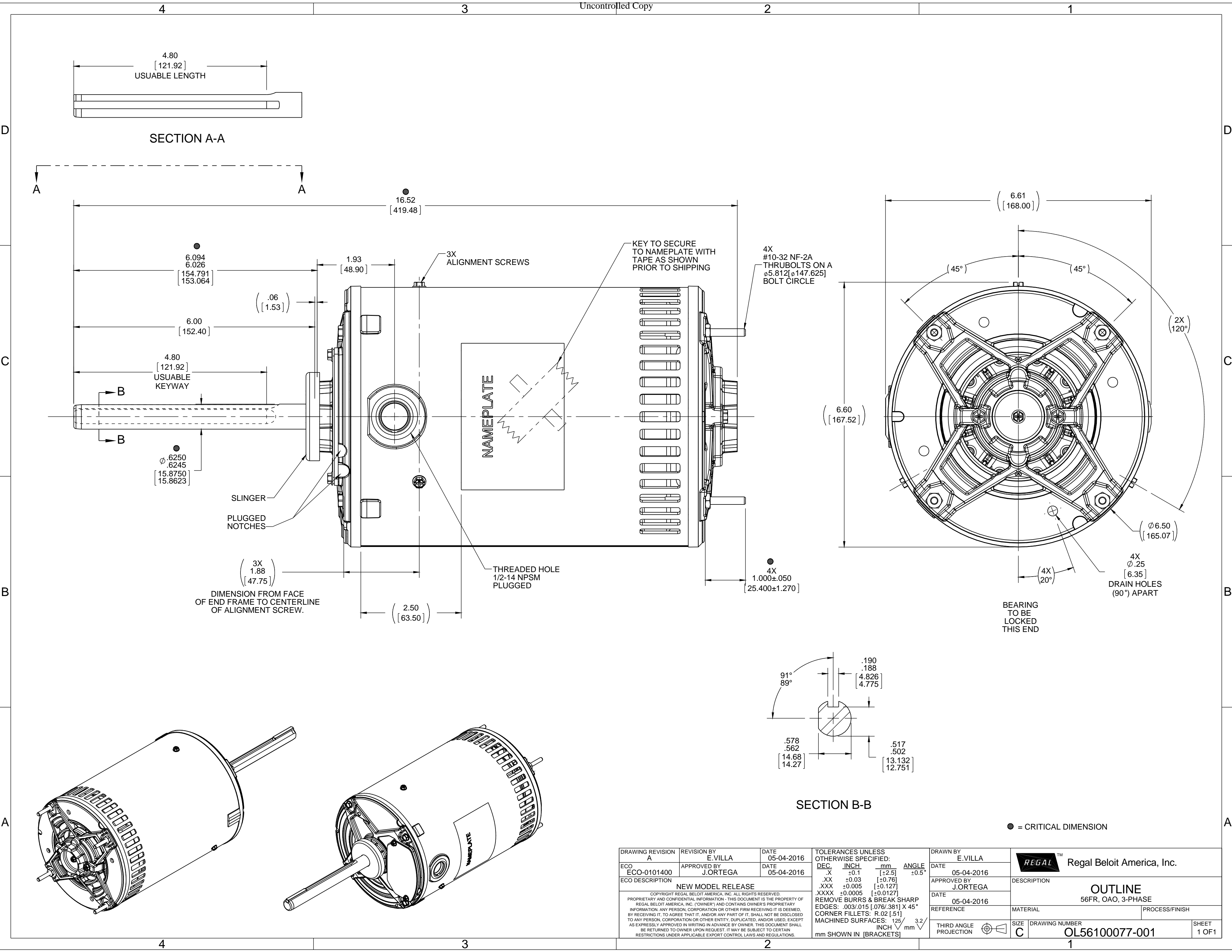
### Nameplate Specifications



Output HP	1.0 Hp	Output KW	0.75 kW
Frequency	60 Hz	Voltage	200-230/460 V
Current	4.3-4.6/2.3 A	Speed	1140 rpm
Service Factor	1	Phase	3
Duty	Continuous	Insulation Class	B
Frame	56Y	Enclosure	Open Air Over
Thermal Protection	Thermally Protected	Ambient Temperature	60 °C
UL	Recognized	CSA	Y
CE	Y	Number of Speeds	1

### Technical Specifications

Electrical Type	Three Phase	Starting Method	Across The Line
Poles	6	Rotation	Reversible
Mounting	Round	Drive End Bearing	Ball
Opp Drive End Bearing	Ball	Frame Material	Rolled Steel
Shaft Type	Keyed	Overall Length	16.52 in
Frame Length	8.15 in	Shaft Diameter	0.625 in
Shaft Extension	6.06 in		
Outline Drawing	OL56100077-001	Connection Drawing	DD10027-001

This is an uncontrolled document once printed or downloaded and is subject to change without notice. Date Created:10/07/2021

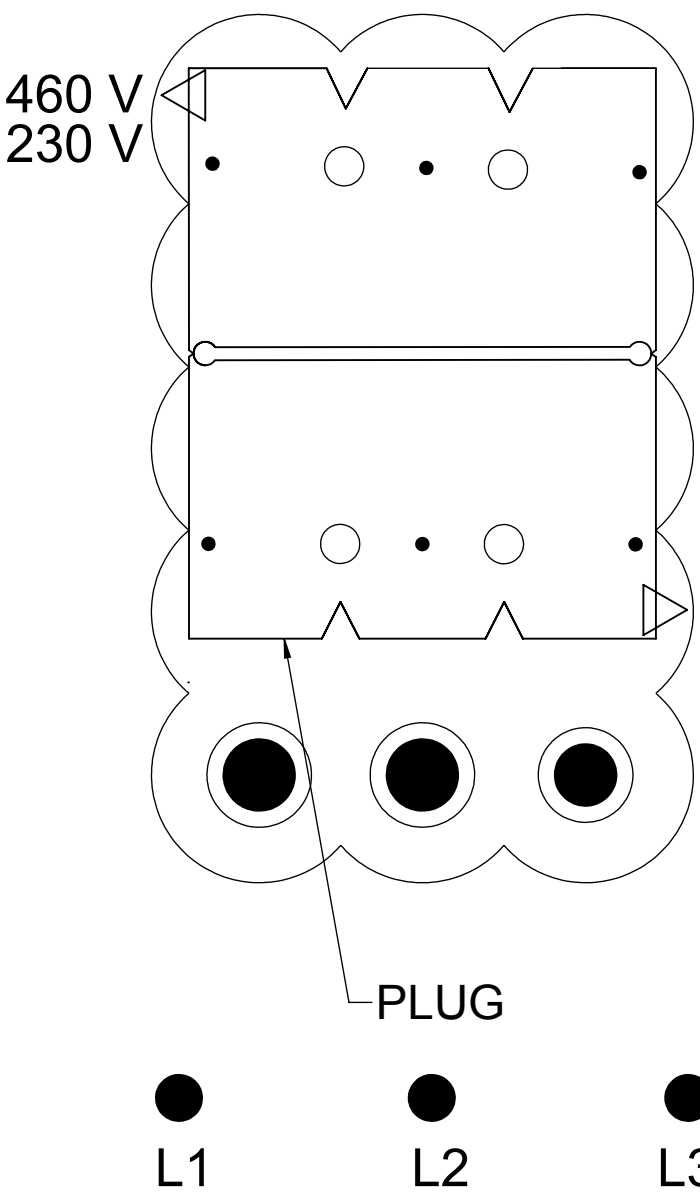
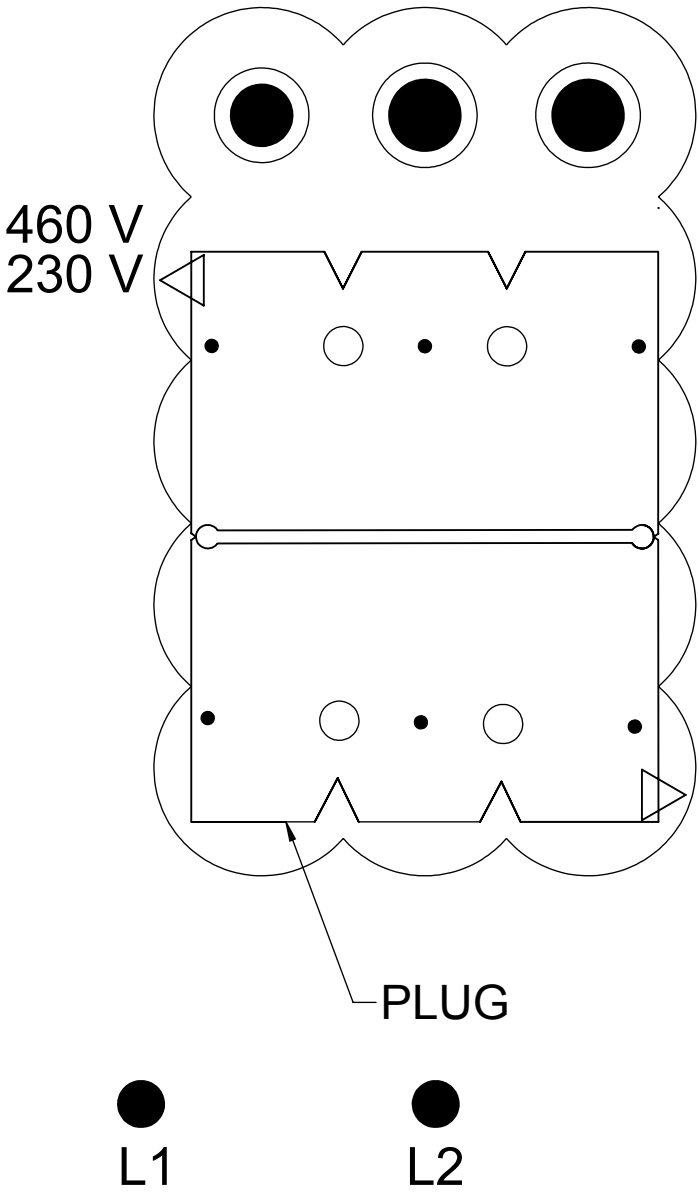


DRAWING REVISION A		REVISION BY E.VILLA		DATE 05-04-2016		TOLERANCES UNLESS OTHERWISE SPECIFIED: <table><tr><td>DEC.</td><td>INCH</td><td>mm</td><td>ANGLE</td></tr><tr><td>.X</td><td>±0.1</td><td>[±2.5]</td><td>±0.5°</td></tr><tr><td>.XX</td><td>±0.03</td><td>[±0.76]</td><td></td></tr><tr><td>.XXX</td><td>±0.005</td><td>[±0.127]</td><td></td></tr><tr><td>.XXX</td><td>±0.0005</td><td>[±0.0127]</td><td></td></tr></table>				DEC.	INCH	mm	ANGLE	.X	±0.1	[±2.5]	±0.5°	.XX	±0.03	[±0.76]		.XXX	±0.005	[±0.127]		.XXX	±0.0005	[±0.0127]	
DEC.	INCH	mm	ANGLE																										
.X	±0.1	[±2.5]	±0.5°																										
.XX	±0.03	[±0.76]																											
.XXX	±0.005	[±0.127]																											
.XXX	±0.0005	[±0.0127]																											
ECO ECO-0101400		APPROVED BY J.ORTEGA		DATE 05-04-2016		DRAWN BY E.VILLA		 Regal Beloit America, Inc.																					
ECO DESCRIPTION NEW MODEL RELEASE						APPROVED BY J.ORTEGA		DESCRIPTION																					
COPYRIGHT REGAL BELOIT AMERICA, INC. ALL RIGHTS RESERVED. PROPRIETARY AND CONFIDENTIAL INFORMATION - THIS DOCUMENT IS THE PROPERTY OF REGAL BELOIT AMERICA, INC. ("OWNER") AND CONTAINS OWNER'S PROPRIETARY INFORMATION. ANY PERSON, CORPORATION OR OTHER FIRM RECEIVING IT IS DEEMED, BY RECEIVING IT, TO AGREE THAT IT, AND/OR ANY PART OF IT, SHALL NOT BE DISCLOSED TO ANY PERSON, CORPORATION OR OTHER ENTITY, DUPLICATED, AND/OR USED, EXCEPT AS EXPRESSLY APPROVED IN WRITING IN ADVANCE BY OWNER. THIS DOCUMENT SHALL BE RETURNED TO OWNER UPON REQUEST. IT MAY BE SUBJECT TO CERTAIN RESTRICTIONS UNDER APPLICABLE EXPORT CONTROL LAWS AND REGULATIONS.						DATE 05-04-2016		OUTLINE 56FR, OAO, 3-PHASE																					
						REFERENCE		MATERIAL		PROCESS/FINISH																			
mm SHOWN IN [BRACKETS]						THIRD ANGLE PROJECTION		SIZE C																					
								DRAWING NUMBER OL56100077-001																					
								SHEET 1 OF 1																					

LOW VOLTAGE

HIGH VOLTAGE

- NOTES:
- TO CHANGE VOLTAGE:
- 1. POWER MUST NOT BE CONNECTED.
  - 2. PULL SELECTOR PLUG OUT.
  - 3. SHIFT PLUG TO ALIGN ARROW TO 460V FOR HIGH VOLTAGE OR 230V FOR LOW VOLTAGE AS DESIRED.
  - 4. PUSH PLUG BACK IN

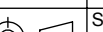


DD10027-001

ROTATION CCW-LE TO REVERSE INTERCHANGE ANY TWO  
LINE LEADS.

PLATE: 41365

SLOT: 22

DRAWING REVISION A		REVISION BY G. RODRIGUEZ		DATE 04-06-2016		TOLERANCES UNLESS OTHERWISE SPECIFIED: DEC. INCH mm ANGLE .X ±0.1 [±2.5] ±0.5° .XX ±0.01 [±0.25] XXX ±0.005 [±0.127] .XXXX ±0.0005 [±0.0127] REMOVE BURRS & BREAK SHARP EDGES: .003/.015 [0.076/.381] X 45° CORNER FILLETS: R.02 [51] MACHINED SURFACES: 125/3.2 mm SHOWN IN [BRACKETS]				DRAWN BY G. RODRIGUEZ		<div><div>REGAL™</div><div>Regal Beloit America, Inc.</div></div>			
ECO		APPROVED BY E. MARTINEZ		DATE 04-06-2016						DATE 04-06-2016					
ECO DESCRIPTION										APPROVED BY E. MARTINEZ		DESCRIPTION CONN DIAGRAM-NAMEPLATE			
COPYRIGHT REGAL BELOIT AMERICA, INC. ALL RIGHTS RESERVED. PROPRIETARY AND CONFIDENTIAL INFORMATION - THIS DOCUMENT IS THE PROPERTY OF REGAL BELOIT AMERICA, INC. ("OWNER") AND CONTAINS OWNER'S PROPRIETARY INFORMATION. ANY PERSON, CORPORATION OR OTHER FIRM RECEIVING IT IS DEEMED, BY RECEIVING IT, TO AGREE THAT IT, AND/OR ANY PART OF IT, SHALL NOT BE DISCLOSED TO ANY PERSON, CORPORATION OR OTHER ENTITY, DUPLICATED, AND/OR USED, EXCEPT AS EXPRESSLY APPROVED IN WRITING IN ADVANCE BY OWNER. THIS DOCUMENT SHALL BE RETURNED TO OWNER UPON REQUEST. IT MAY BE SUBJECT TO CERTAIN RESTRICTIONS UNDER APPLICABLE EXPORT CONTROL LAWS AND REGULATIONS.										DATE 04-06-2016					
										REFERENCE		MATERIAL		PROCESS/FINISH	
										THIRD ANGLE PROJECTION				SIZE B	