



INDOOR AIR QUALITY

PRODUCT CATALOG



airkinglimited.com



Table of Contents

FAN SELECTION GUIDE

Selecting Your Fan Page 3

ENERGY STAR® CERTIFIED EXHAUST FANS

EV Series Variable Speed Exhaust Fans Pages 4 - 5

E Series Exhaust Fans Pages 6 - 7

AKLS Series Deluxe Quiet Exhaust Fans Pages 8 - 9

AK Series Quiet Exhaust Fans Pages 10 - 11

BFC Series Quiet Exhaust Fans Pages 12 - 13

BFQ Series Snap-In Exhaust Fans Pages 14 - 16

EXHAUST FANS WITH LIGHTS

AKL Series Exhaust Fans with Light Pages 17 - 18

DRLC Series Decorative Exhaust Fans with Light Pages 19 - 20

EXHAUST FANS

AS Series Economical Exhaust Fans Pages 21 - 22

FIRE RATED EXHAUST FANS (UL263, UL555C)

FR Series Fire Rated Exhaust Fans Pages 23 - 26

COMBINATION HEATERS

Combination Heaters Pages 27 - 28

COMMERCIAL EXHAUST FANS

AKZA Series Inline Exhaust Fans Pages 29 - 30

EXHAUST FAN CONTRACTOR PACKS

Exhaust Fan Contractor Packs Page 31

EXHAUST FAN ACCESSORIES

Exhaust Fan Accessories Page 32

FRESH AIR SUPPLY

QFAMD / F130D Page 34

MQFAM / MFAS Page 35

Motorized Damper Page 36

Fresh Air Accessories Page 37

PRODUCT SPECIFICATIONS

Specifications Pages 38 - 39



Fan Selection

Air King offers a wide array of ventilation solutions including ENERGY STAR® certified, ASHRAE 62.2 options, fans to be used to comply with California Title 24 requirements, as well as UL555C and UL263 Fire Rated options to fit almost any residential application. Selecting the perfect Air King ventilation fan for your requirements can be done through the following considerations:

Determine Your CFM

CFM (Cubic Feet Per Minute) is the amount of air the fan is exhausting. Use the following equation to calculate the required CFM for a typical bathroom installation:

Room Length x Room Width x 1.1 = Required CFM



Choose The Sound Level (Sones)

The next consideration is the sound level which is measured in Sones. The lower the sone, the quieter the fan. A fan under one sone is considered very quiet. The sound level will have a direct impact on the cost of the fan - the lower the sound, typically the higher the price. Air King is unique in offering many products that are very quiet while still being budget friendly.

Choose Your Features

Features include humidity control, lights, decorative grills, heaters, dual speed fans and more. Determine if you will need any of these features for your application and choose a fan accordingly.

Special Consideration

Before selecting any fan, you should consult all national and local codes to determine if any specialized requirements exist. Many municipalities have codes in place for CFM, Sones and efficiency.



CALGreen





EV Series

VARIABLE SPEED EXHAUST FANS

Air King's ENERGY STAR® certified variable speed ECO exhaust fans put CFM control in your hands while combining efficiency with barely audible sound levels to deliver effective ventilation to your home. Perfect for master bathrooms as well as for use to solve for ASHRAE 62.2 whole dwelling requirements.





EV Series

- **ENERGY STAR® Certified**

- Solution for **ASHRAE 62.2** continuous whole house ventilation

Ventilation calculation: (Total sq. ft. of home/100) + ((# of bedrooms+1) x 7.5 cfm)

For best fan selection round the min ventilation # up to the nearest 0 - ex. 45 CFM should be rounded up to 50 CFM

- 8 capacity settings on low speed allow the fan to be set to the required continuous ventilation rate. Low speed set points include: 30, 40, 50, 60, 70, 90, 100 and 120 CFM
- High speed rapidly clears the air of moisture, odors or other contaminants
High speed set points include: 80, 110, 130 and Boost
- Boost speed provides extra ventilation for installation with higher static pressure and ensures airflow requirements are met when used to comply with ASHRAE 62.2
- 6" Round duct connector with gasketed damper protects against backdrafts and seals the duct better than any other damper on the market today
- Listed for installation over a tub or shower on a GFCI circuit
- Hanger bar installation
- **EVL SERIES:** LED lamp **INCLUDED**



HUMIDITY SENSING MODELS

(EVDH, EVLDH, EVDGH, EVDLGH)

Integrated humidistat senses the humidity level of the room and turns the fan to high speed until the humidity level is below the preset level. Can be set up to 80% RH.



MOTION SENSING MODELS

(EVDGH, EVDLGH)

Integrated motion sensor detects occupancy of the room and turns the fan to high speed for the preset time after the room is vacated before automatically turning the fan back to low speed. Timer can be set from 30 seconds to 80 minutes.

MODEL	CFM @ .1 SP	SONES @ .1 SP	BOOST SPEED			MAX. FAN WATTS	LIGHTING	HUMIDITY SENSOR	MOTION SENSOR	LISTING	ASHRAE 62.2	TITLE 24	DUCT SIZE	HOUSING SIZE
			CFM @ .1 SP	SONES @ .1 SP	CFM @ .25 SP									
EVD	30 - 130	<0.3	150	0.6	113	37.0	N/A	NO	NO	ETL	Whole House/Local	YES	6"	12 ⁵ / ₈ "W x 12 ³ / ₄ "D x 9 ⁷ / ₈ "H
EVLD	30 - 130	<0.3	150	0.6	112	37.0	LED	NO	NO	ETL	Whole House/Local	YES	6"	12 ⁵ / ₈ "W x 12 ³ / ₄ "D x 9 ⁷ / ₈ "H
EVDGH	30 - 130	<0.3	150	0.6	113	37.0	N/A	YES	YES	ETL	Whole House/Local	YES	6"	12 ⁵ / ₈ "W x 12 ³ / ₄ "D x 9 ⁷ / ₈ "H
EVLDGH	30 - 130	<0.3	150	0.6	112	37.0	LED	YES	YES	ETL	Whole House/Local	YES	6"	12 ⁵ / ₈ "W x 12 ³ / ₄ "D x 9 ⁷ / ₈ "H
EVDH	30 - 130	<0.3	150	0.6	113	37.0	N/A	YES	NO	ETL	Whole House/Local	YES	6"	12 ⁵ / ₈ "W x 12 ³ / ₄ "D x 9 ⁷ / ₈ "H
EVLDH	30 - 130	<0.3	150	0.6	112	37.0	LED	YES	NO	ETL	Whole House/Local	YES	6"	12 ⁵ / ₈ "W x 12 ³ / ₄ "D x 9 ⁷ / ₈ "H





E Series

ECO-EXHAUST FANS

Air King's ENERGY STAR® certified ECO exhaust fans combine efficiency with barely audible sound levels to deliver effective ventilation to your home. Perfect for bathrooms, laundry rooms and other areas of the home needing ventilation.





HUMIDITY SENSING MODELS (E80SH, E130SH)

Integrated humidistat senses the humidity level of the room and turns the fan on until the humidity level is below the preset level. Can be set up to 80% RH.

E Series

- **ENERGY STAR® Certified**

- Solution for **ASHRAE 62.2** continuous whole house ventilation

Ventilation calculation: (Total sq. ft. of home/100) + ((# of bedrooms+1) x 7.5 cfm)

For best fan selection round the min ventilation # up to the nearest 0 - ex. 45 CFM should be rounded up to 50 CFM

- Boost speed provides extra ventilation for installation with higher static pressure and ensures airflow requirements are met when used to comply with ASHRAE 62.2
- 6" Round duct connector with gasketed damper protects against backdrafts and seals the duct better than any other damper on the market today
- Listed for installation over a tub or shower on a GFCI circuit
- Hanger bar installation

MODEL	CFM @ .1 SP	SONES @ .1 SP	BOOST SPEED			MAX. FAN WATTS	LIGHTING	HUMIDITY SENSOR	MOTION SENSOR	LISTING	ASHRAE 62.2	TITLE 24	DUCT SIZE	HOUSING SIZE
			CFM @ .1 SP	SONES @ .1 SP	CFM @ .25 SP									
E80S	80	<0.3	110	0.7	84	37.0	N/A	NO	NO	ETL	Whole House/Local	YES	6"	12 7/8"W x 12 3/4"D x 9 7/8"H
E110S	110	<0.3	150	0.6	111	37.0	N/A	NO	NO	ETL	Whole House/Local	YES	6"	12 7/8"W x 12 3/4"D x 9 7/8"H
E130S	130	<0.3	150	0.7	113	37.0	N/A	NO	NO	ETL	Whole House/Local	YES	6"	12 7/8"W x 12 3/4"D x 9 7/8"H
E80SH	80	<0.3	110	0.7	84	37.0	N/A	YES	NO	ETL	Whole House/Local	YES	6"	12 7/8"W x 12 3/4"D x 9 7/8"H
E130SH	130	<0.3	150	0.7	113	37.0	N/A	YES	NO	ETL	Whole House/Local	YES	6"	12 7/8"W x 12 3/4"D x 9 7/8"H





AKLS Series

DELUXE QUIET EXHAUST FANS

Air King's ENERGY STAR® certified deluxe quiet exhaust fans provide quiet ventilation solutions for your bathroom, laundry room or other areas of the home needing powerful energy efficient and effective ventilation.





AKLS Series



HUMIDITY SENSING MODELS (AK80LS6H, AK100LS6H)

Integrated humidistat senses the humidity level of the room and turns the fan on until the humidity level is below the preset level. Can be set up to 80% RH.

- **ENERGY STAR® Certified**

- Solutions for **ASHRAE 62.2** continuous whole house ventilation or local ventilation (models with a sone rating of 1.0 or below can be used for whole house ventilation)
- Round duct connector with damper protects against backdrafts
- Listed for installation over a tub or shower on a GFCI circuit
- Hanger bar installation

MODEL	CFM @ .1 SP	CFM @ .25 SP	SONES @ .1 SP	MAX. FAN WATTS	SPEEDS	LIGHTING	HUMIDITY SENSOR	LISTING	ASHRAE 62.2	TITLE 24	DUCT SIZE	HOUSING SIZE
AK150LS	150	118	0.9	37.0	Single	N/A	NO	UL	Local	YES	6"	12 $\frac{7}{8}$ "W x 12 $\frac{3}{4}$ "D x 9 $\frac{7}{8}$ "H
AK200LS	200	183	1.2	57.0	Single	N/A	NO	UL	Local	YES	6"	12 $\frac{7}{8}$ "W x 12 $\frac{3}{4}$ "D x 9 $\frac{7}{8}$ "H
AK280LS	280	257	3.0	65.7	Single	N/A	NO	UL	Local	YES	6"	12 $\frac{7}{8}$ "W x 12 $\frac{3}{4}$ "D x 9 $\frac{7}{8}$ "H
AK80LS6	80	57	0.5	25.2	Single	N/A	NO	UL	Whole House/Local	YES	6"	10 $\frac{7}{8}$ "W x 9 $\frac{9}{16}$ "D x 7 $\frac{7}{8}$ "H
AK90LS6	90	65	0.8	25.7	Single	N/A	NO	UL	Whole House/Local	YES	6"	10 $\frac{7}{8}$ "W x 9 $\frac{9}{16}$ "D x 7 $\frac{7}{8}$ "H
AK100LS6	100	78	1.0	26.6	Single	N/A	NO	UL	Whole House/Local	YES	6"	10 $\frac{7}{8}$ "W x 9 $\frac{9}{16}$ "D x 7 $\frac{7}{8}$ "H
AK110LS6	110	99	1.4	29.0	Single	N/A	NO	UL	Local	YES	6"	10 $\frac{7}{8}$ "W x 9 $\frac{9}{16}$ "D x 7 $\frac{7}{8}$ "H
AK80LS6H	80	57	0.5	25.2	Single	N/A	YES	UL	Whole House/Local	YES	6"	10 $\frac{7}{8}$ "W x 9 $\frac{9}{16}$ "D x 7 $\frac{7}{8}$ "H
AK100LS6H	100	78	1.0	26.6	Single	N/A	YES	UL	Whole House/Local	YES	6"	10 $\frac{7}{8}$ "W x 9 $\frac{9}{16}$ "D x 7 $\frac{7}{8}$ "H
AK80LS	80	61	0.7	25.9	Single	N/A	NO	UL	Whole House/Local	YES	4"	10 $\frac{7}{8}$ "W x 9 $\frac{9}{16}$ "D x 7 $\frac{7}{8}$ "H
AK110LS	110	90	1.5	28.5	Single	N/A	NO	UL	Local	YES	4"	10 $\frac{7}{8}$ "W x 9 $\frac{9}{16}$ "D x 7 $\frac{7}{8}$ "H



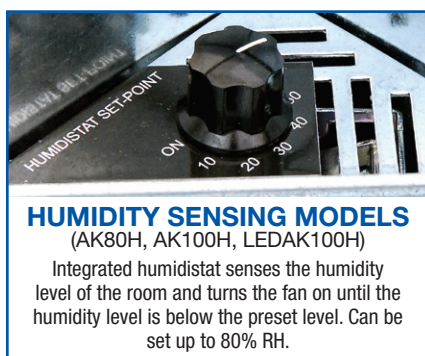


AK Series

QUIET EXHAUST FANS

Air King's ENERGY STAR® certified exhaust fans provide quiet, effective and efficient ventilation solutions for local and national codes across the country. Perfect for bathrooms, laundry rooms or other areas of the home needing ventilation.





AK Series

- **ENERGY STAR® Certified**
- Solutions for **ASHRAE 62.2** continuous whole house ventilation or local ventilation (models with a sone rating of 1.0 or below can be used for whole house ventilation)
- Round duct connector with damper protects against backdrafts
- Listed for installation over a tub or shower on a GFCI circuit
- Hanger bar installation
- Select models available in contractor packs (see page 38 for details)
- **LEDAK SERIES:** Moonstone glass light lens with **INCLUDED** LED lamp

MODEL	CFM @ .1 SP	CFM @ .25 SP	SONES @ .1 SP	MAX. FAN WATTS	SPEEDS	LIGHTING	HUMIDITY SENSOR	LISTING	ASHRAE 62.2	TITLE 24	DUCT SIZE	HOUSING SIZE
AK50S	50	40	0.5	14.5	Single	N/A	NO	UL	Whole House/Local	YES	4"	10 1/8"W x 9 1/8"D x 7 1/8"H
AK80LS-1	80	68	1.0	28.1	Single	N/A	NO	UL	Whole House/Local	YES	4"	10 1/8"W x 9 1/8"D x 7 1/8"H
AK80	80	68	1.5	27.6	Single	N/A	NO	UL	Local	YES	4"	10 1/8"W x 9 1/8"D x 7 1/8"H
AK80H	80	68	1.0	28.1	Single	N/A	YES	UL	Whole House/Local	YES	4"	10 1/8"W x 9 1/8"D x 7 1/8"H
AK90	90	75	1.5	25.4	Single	N/A	NO	UL	Local	YES	4"	10 1/8"W x 9 1/8"D x 7 1/8"H
AK110PN	100	83	2.0	26.4	Single	N/A	NO	UL	Local	YES	4"	10 1/8"W x 9 1/8"D x 7 1/8"H
AK100H	100	83	2.0	26.4	Single	N/A	YES	UL	Local	YES	4"	10 1/8"W x 9 1/8"D x 7 1/8"H
AK100D	50 / 100	83	0.4 / 2.0	26.4	Dual	N/A	NO	UL	Whole House/Local	YES	4"	10 1/8"W x 9 1/8"D x 7 1/8"H
LEDAK50	50	35	0.3	16.0	Single	LED	NO	UL	Whole House/Local	YES	4"	10 1/8"W x 9 1/8"D x 7 1/8"H
LEDAK80	80	67	1.2	27.6	Single	LED	NO	UL	Local	YES	4"	10 1/8"W x 9 1/8"D x 7 1/8"H
LEDAK100	100	83	2.0	26.5	Single	LED	NO	UL	Local	YES	4"	10 1/8"W x 9 1/8"D x 7 1/8"H
LEDAK100H	100	83	2.0	26.5	Single	LED	YES	UL	Local	YES	4"	10 1/8"W x 9 1/8"D x 7 1/8"H
LEDAK100D	50 / 100	83	0.4 / 2.0	26.5	Dual	LED	NO	UL	Local	YES	4"	10 1/8"W x 9 1/8"D x 7 1/8"H





BFC Series

QUIET EXHAUST FANS

Air King's ENERGY STAR® certified BFC exhaust fan provides a quiet, efficient and cost effective solution for ASHRAE 62.2 whole dwelling ventilation. Perfect for bathrooms, laundry rooms or other areas of the home needing ventilation.





BFC Series

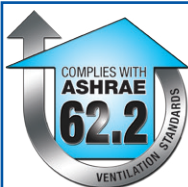


HUMIDITY SENSING MODELS (BFC90H, BFC100H)

Integrated humidistat senses the humidity level of the room and turns the fan on until the humidity level is below the preset level. Can be set up to 80% RH.

- **ENERGY STAR® Certified**

- Perfect solution for **ASHRAE 62.2** continuous whole house ventilation or local ventilation
- Round duct connector with metal damper protects against backdrafts
- Listed for installation over a tub or shower on a GFCI circuit
- Hanger bar installation



PERFECT ASHRAE 62.2 SOLUTION

One of the **LOWEST COST** continuous operation solutions on the market today

90 CFM provides whole house ventilation for homes up to 4,500 square feet
100 CFM provides whole house ventilation for homes up to 5,500 square feet

Compact size and low profile grill make the fan hardly noticeable

MODEL	CFM @ .1 SP	CFM @ .25 SP	SONES @ .1 SP	MAX. FAN WATTS	SPEEDS	LIGHTING	HUMIDITY SENSOR	LISTING	ASHRAE 62.2	TITLE 24	DUCT SIZE	HOUSING SIZE
BFC90	90	75	1.0	19.0	Single	N/A	NO	ETL	Whole House/Local	YES	4"	9"W x 9"D x 7 ⁷ / ₈ "H
BFC90H	90	75	1.0	19.0	Single	N/A	YES	ETL	Whole House/Local	YES	4"	9"W x 9"D x 7 ⁷ / ₈ "H
BFC100	100	85	1.0	22.3	Single	N/A	NO	ETL	Whole House/Local	YES	4"	9"W x 9"D x 7 ⁷ / ₈ "H
BFC100H	100	85	1.0	19.0	Single	N/A	YES	ETL	Whole House/Local	YES	4"	9"W x 9"D x 7 ⁷ / ₈ "H





BFQ Series

SNAP-IN INSTALLATION EXHAUST FANS

Air King's high performance Snap-In installation exhaust fans provide effective and economical ventilation with easy Snap-In installation. Perfect for powder rooms, bathrooms, laundry rooms or other areas of the home needing ventilation.





BFQ Series

- **Models BFQ50 and BFQ75 are ENERGY STAR® Certified**
- Solutions for **ASHRAE 62.2** continuous whole house ventilation or local ventilation (Whole house ventilation: BFQ50, Local exhaust: BFQ70, BFQ80, BFQ90)
- 4" Round duct connector with damper protects against backdrafts
- UL Listed high-impact plastic housing will not rust or corrode over time and is listed for installation over a tub or shower on a GFCI circuit
- Installs using the included SNAP-IN mounting system with wire nuts and a romex connector included and can be wall mounted in 2" x 6" construction
- Select models available in contractor packs (see page 38 for details)

SNAP-IN INSTALLATION



NAIL the included bracket in place.

SNAP the naturally sound absorbent molded plastic housing into the bracket.

WIRE the fan with the included wire nuts and strain relief.

Attach the ducting and **YOU'RE DONE!**

MODEL	CFM @ .1 SP	CFM @ .25 SP	SONES @ .1 SP	MAX. FAN WATTS	SPEEDS	LIGHTING	ENERGY STAR	LISTING	ASHRAE 62.2	TITLE 24	DUCT SIZE	HOUSING SIZE
BFQ50	50	36	0.6	17.4	Single	N/A	YES	ETL	Whole House/Local	YES	4"	9 1/8"W x 8 1/16"D x 4 3/4"H
BFQ75	70	55	2.0	23.5	Single	N/A	YES	ETL	Local	YES	4"	9 1/8"W x 8 1/16"D x 4 3/4"H
BFQ80	80	66	2.0	29.0	Single	N/A	NO	ETL	Local	NO	4"	9 1/8"W x 8 1/16"D x 4 3/4"H
BFQ90	90	-	3.0	50.0	Single	N/A	NO	ETL	Local	NO	4"	9 1/8"W x 8 1/16"D x 4 3/4"H
BFQ110	100	-	3.5	72.5	Single	N/A	NO	ETL	-	NO	4"	9 1/8"W x 8 1/16"D x 4 3/4"H
BFQ140	120	-	5.0	97.0	Single	N/A	NO	ETL	-	NO	4"	9 1/8"W x 8 1/16"D x 4 3/4"H





BFQL Series

- **ENERGY STAR® Certified**

- Solutions for **ASHRAE 62.2** continuous whole house ventilation or local ventilation (models with a sone rating of 1.0 or below can be used for whole house ventilation)
- 4" Round duct connector with damper protects against backdrafts
- UL Listed high-impact plastic housing will not rust or corrode over time and is listed for installation over a tub or shower on a GFCI circuit
- Installs using the included SNAP-IN mounting system with wire nuts and a romex connector included
- LED lamp **INCLUDED**

LED
LAMP INCLUDED

SNAP-IN INSTALLATION



NAIL the included bracket in place.

SNAP the naturally sound absorbent molded plastic housing into the bracket.

WIRE the fan with the included wire nuts and strain relief.

Attach the ducting and **YOU'RE DONE!**

MODEL	CFM @ .1 SP	CFM @ .25 SP	SONES @ .1 SP	MAX. FAN WATTS	SPEEDS	LIGHTING	ENERGY STAR	LISTING	ASHRAE 62.2	TITLE 24	DUCT SIZE	HOUSING SIZE
BFQL50	50	39	0.8	17.8	Single	LED	YES	ETL	Whole House/Local	YES	4"	9 1/8"W x 8 1/2"D x 5 3/4"H
BFQL70	70	58	2.0	22.6	Single	LED	YES	ETL	Local	YES	4"	9 1/8"W x 8 1/2"D x 5 3/4"H





AKL Series

EXHAUST FANS with LIGHT

Air King's AKL series exhaust fans with light provide that perfect balance between performance and affordability. Fans can utilize up to a 100 watt incandescent light bulb. Perfect for larger bathrooms or other areas of the home needing ventilation and lighting.





AKL Series

Deluxe Series with Light (AK100L)

- Moonstone glass light lens disperses the light evenly throughout the room
- Utilizes up to a 100W medium base bulb or an equivalent energy efficient type bulb
- 7 watt night-light feature
- Plastic damper protects against backdrafts and ensures quiet operation
- Easily installs using the included adjustable hanging brackets

Deluxe Round Series with Light (AK863L, AK864L)

- Round grill makes unit easier to visually center within the room
- Moonstone glass light lens disperses the light evenly throughout the room
- Utilizes up to a 100W medium base bulb or an equivalent energy efficient type bulb
- 7 watt night-light feature (model AK863L only)
- Plastic damper protects against backdrafts and ensures quiet operation
- Easily installs using the included adjustable hanging brackets

MODEL	CFM @ .1 SP	SONES @ .1 SP	MAX. FAN WATTS	SPEEDS	LIGHTING	LISTING	ASHRAE 62.2	DUCT SIZE	HOUSING SIZE
AK100L	100	2.5	37.0	Single	100W or equivalent, 7W night light*	UL	Local	4"	9 3/8"W x 10 7/8"D x 7 7/8"H
AK863L	100	3.5	70.0	Single	100W or equivalent, 7W night light*	UL	-	4"	9 1/8"W x 8 1/2"D x 5 3/4"H
AK864L	100	3.5	70.0	Single	100W or equivalent*	UL	-	4"	9 1/8"W x 8 1/2"D x 5 3/4"H

* Bulbs not included



DRLC Series

DECORATIVE EXHAUST FANS

Air King's DRLC series decorative exhaust fans with light provide stylish and effective ventilation and are available in multiple finishes. Perfect for bathrooms or powder rooms.





DRLC Series

- Decorative grills and light lenses enhance the decor of your bathroom
- 13½" diameter round grill makes unit easier to visually center within the room
- Utilizes up to 2 - 60W medium base bulbs or equivalent energy efficient type bulbs
- Glass light lens disperses light throughout the room
- Plastic damper protects against backdrafts and ensures quiet operation
- Easily installs using the included adjustable hanging brackets
- Available finishes: Oil Rubbed Bronze
Nickel
White

MODEL	CFM @ .1 SP	SONES @ .1 SP	MAX. FAN WATTS	SPEEDS	FINISH	LIGHTING	LISTING	ASHRAE 62.2	DUCT SIZE	HOUSING SIZE
DRLC701	70	4.0	44.0	Single	Oil Rubbed Bronze	2 - 60W or equivalent*	UL	-	4"	7⅞"W x 7⅞"D x 5⅞"H
DRLC702	70	4.0	44.0	Single	Nickel	2 - 60W or equivalent*	UL	-	4"	7⅞"W x 7⅞"D x 5⅞"H
DRLC703	70	4.0	44.0	Single	White	2 - 60W or equivalent*	UL	-	4"	7⅞"W x 7⅞"D x 5⅞"H

* Bulbs not included



AS Series

ECONOMICAL EXHAUST FANS

Air King's economical exhaust fans offer budget friendly yet effective ventilation solutions. Perfect for smaller bathrooms as well as powder rooms and laundry rooms.





AS Series

Economic Exhaust Fans (AS50, AS70, AS54)

- Plastic damper protects against backdrafts and ensures quiet operation
- Easily installs using the double thick keyhole mounting tabs
- Available in contractor packs (see page 38 for details)

Economic Exhaust Fans with Light (ASLS50, ASLC70)

- Utilizes up to a 100W medium base bulb or an equivalent energy efficient type bulb
- Plastic damper protects against backdrafts and ensures quiet operation
- Easily installs using the double thick keyhole mounting tabs or included hanging brackets
- Available in contractor packs (see page 38 for details)

MODEL	CFM @ .1 SP	SONES @ .1 SP	MAX. FAN WATTS	SPEEDS	LIGHTING	LISTING	ASHRAE 62.2	DUCT SIZE	HOUSING SIZE
AS54	50	3.0	40.5	Single	-	UL	Local	4"	7¼"W x 7¼"D x 4¾"H
AS50	50	4.0	48.0	Single	-	UL	-	3"	7¼"W x 7¼"D x 3¾"H
AS70	70	5.5	50.0	Single	-	UL	-	3"	7¼"W x 7¼"D x 3¾"H
ASLC50	50	3.0	48.0	Single	100W or equivalent*	UL	-	4"	7½"W x 7½"D x 5⅞"H
ASLC70	70	5.5	44.0	Single	100W or equivalent*	UL	-	4"	7½"W x 7½"D x 5⅞"H

* Bulbs not included





FR Series

FIRE RATED EXHAUST FANS

Air King's fire rated exhaust fans are an effective solution when fire codes need to be met. All FR series exhaust fans are UL263 as well as UL555C classified and feature a damper with a 3 hour fire rating. Perfect for bathrooms as well as other areas of the home.





FR Series

UL263/UL555C
CLASSIFIED CLASSIFIED
for Wood Frame Construction

FIRE RATED EXHAUST FANS

Not all Fans are Created Equal

Life Safety Professionals work hard to develop and enforce building codes to eliminate or reduce potential threats. Nothing can be more frustrating and sometimes more costly than not having the correct product to comply with the building code for your project.

Wood is a Combustible Material

When you're building a multi-family residential project using wood frame construction you'll need to comply with stringent requirements to prevent the spread of fire. These are likely to include the use of fire rated products for ceiling penetrations such as bathroom exhaust fans. Air King Fire Rated Exhaust Fans have been tested and are UL and/or ETL Classified for use in wood frame construction and have been successfully tested in more designs than any major manufacturer.

You will see competitor certifications that will say "For use in any fire resistive floor or roof-ceiling assembly". That doesn't necessarily mean listed for wood frame construction. Wood construction is NOT fire resistive; wood is a combustible material that fire fighters usually consider fuel. The UL/ETL requirement for listing in this case requires mounting and testing of the fan in each approved design above an actual fire. You know you have the right product for the application when the manufacturer provides the design numbers for which the product was tested. No design number - Not UL/ETL Listed for wood frame construction.

Air King Fire Rated Fans, on the other hand, are UL and/or ETL Classified for the greatest number of wood frame designs at the time of this printing. Be sure you have the right product and save yourself a lot of time and trouble by starting with Air King.





FRAK Series

- **ENERGY STAR® Certified**

- Solutions for **ASHRAE 62.2** continuous whole house ventilation or local ventilation (models with a sone rating of 1.0 or below can be used for whole house ventilation)
- Three part system that includes a housing, motor/blade/grill and damper
- 4" Round spring loaded metal damper protects against backdrafts
- Available in single packs or in contractor packs of 4
- Low profile and durable, all metal grill with a painted, white finish
- Easily installs using the included adjustable hanging brackets
- Listed as fan/damper assembly for the following Wood Frame design numbers:

ETL Classified UL263/E119:

L501, L502, L503, L506, L507, L508, L512, L513, L514, L515, L516, L517, L519, L521, L522, L523, L528, L530, L533, L537, L545, L546, L550, L562, L563, L570, L574, L579, L581, L583, L585, L586, M503, M530, M538, P522, P531, P538, P545, P552

cULus:

L501, L502, L503, L506, L507, L508, L512, L513, L514, L515, L516, L517, L519, L522, L523, L533, L537, L545, L581, L583, M530, M538

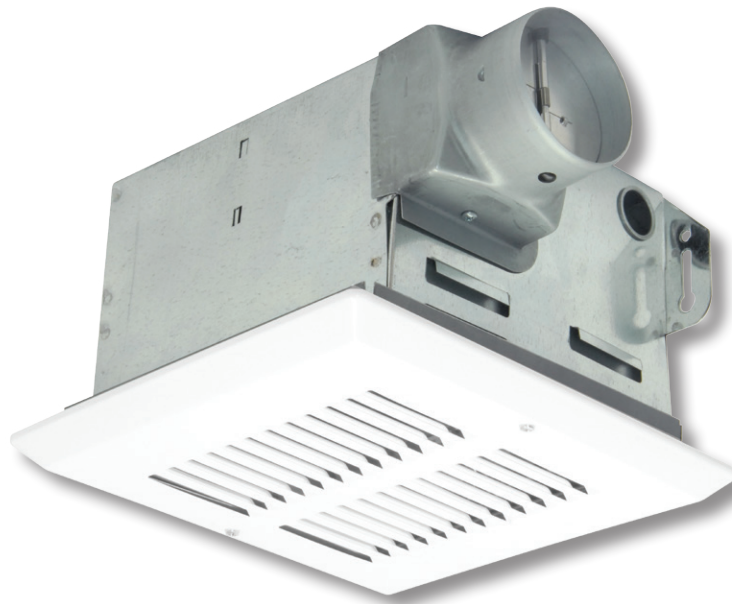


FIRE DAMPER

Non-asbestos, ceramic blanket with a replaceable fusible link, 165°F standard with a 3 hour rating

MODEL	CFM @ .1 SP	CFM @ .25 SP	SONES @ .1 SP	MAX. FAN WATTS	SPEEDS	CONTRACTOR PACK (MOTOR/HOUSING/DAMPER)	LISTING	ASHRAE 62.2	TITLE 24	DUCT SIZE	HOUSING SIZE
FRAK50S	50	39	0.6	16.0	Single	FAK50T / AKFH2 / AKFD2	UL	Whole House/Local	YES	4"	10 3/4"W x 9 1/4"D x 7 1/8"H
FRAK80	80	68	1.0	28.1	Single	FAK80T / AKFH2 / AKFD2	UL	Whole House/Local	YES	4"	10 3/4"W x 9 1/4"D x 7 1/8"H
FRAK90	90	73	1.5	26.0	Single	FAK90T / AKFH2 / AKFD2	UL	Local	YES	4"	10 3/4"W x 9 1/4"D x 7 1/8"H
FRAK100	100	82	2.0	27.5	Single	FAK100T / AKFH2 / AKFD2	UL	Local	YES	4"	10 3/4"W x 9 1/4"D x 7 1/8"H
FRAK100D	100/50	82	2.0	27.5	Dual	FAK100T / AKFH2 / AKFD2	UL	Local	YES	4"	10 3/4"W x 9 1/4"D x 7 1/8"H





FRAS Series

- Three part system that includes a housing, motor/blade/grill and damper
- Available in single packs or in contractor packs of 4
- Low profile and durable, all metal grill with a painted, white finish
- Easily installs using the included adjustable hanging brackets
- Listed as fan/damper assembly for the following Wood Frame design numbers:

ETL Classified UL263/E119:

L501, L502, L503, L506, L507, L508, L512, L513, L514, L515, L516, L517, L519, L521, L522, L523, L528, L530, L533, L537, L545, L546, L550, L562, L563, L570, L574, L579, L581, L583, L585, L586, M503, M530, M538, P522, P531, P538, P545, P552

cULus:

L501, L502, L503, L506, L507, L508, L512, L513, L514, L515, L516, L517, L519, L522, L523, L533, L537, L545, L581, L583, M530, M538



FIRE DAMPER

Non-asbestos, ceramic blanket with a replaceable fusible link, 165°F standard with a 3 hour rating

MODEL	CFM @ .1 SP	CFM @ .25 SP	SONES @ .1 SP	MAX. FAN WATTS	SPEEDS	CONTRACTOR PACK (MOTOR/HOUSING/DAMPER)	LISTING	ASHRAE 62.2	TITLE 24	DUCT SIZE	HOUSING SIZE
FRAS50	50	39	3.0	48.0	Single	FA50T / AKFH1 / AKFD1	UL	-	NO	3"	7 ⁷ / ₈ "W x 7 ¹⁵ / ₁₆ "D x 5 ⁷ / ₈ "H
FRAS70	70	59	4.0	50.0	Single	FA70T / AKFH1 / AKFD1	UL	-	NO	3"	7 ⁷ / ₈ "W x 7 ¹⁵ / ₁₆ "D x 5 ⁷ / ₈ "H



HEATERS

COMBINATION HEATERS

Air King's combination heaters provide effective ventilation as well as supplemental heat for bathrooms. All functions can be wired to operate independently.





HEATER Series



Ceramic Heater Element

The ceramic heating element produces heat by passing current through a self regulating ceramic heating element. The element adjusts itself to the surface temperature, regulating it to produce a constant heat. As air is passed through the element, it will adjust to maintain the temperature.

Combination Ceramic Heaters (Heat/Light/Vent)

- Self-regulating ceramic heating element provides 1,350 watts of safe ceramic warmth
- Able to be installed on a 15 amp circuit
- Utilizes up to a 100W medium base bulb or an equivalent energy efficient type bulb
- Glass light lens

Deluxe Combination Heaters (Heat/Light/Night Light/Vent)

- Control switches are included with the unit
- Utilizes up to a 100W medium base bulb or an equivalent energy efficient type bulb
- Glass light lens
- Easily installs using the included adjustable hanging brackets

Bulb Heater With Exhaust Fan

- Rated type IC for ceiling insulated to R-40
- Utilizes 250 watt maximum type R40 medium base infrared lamp (lamp not included)
- Easily installs using the included adjustable hanging brackets

MODEL	CFM @ .1 SP	SONES @ .1 SP	MAX. FAN WATTS	SPEEDS	HEATING ELEMENT	LIGHTING	LISTING	ASHRAE 62.2	DUCT SIZE	HOUSING SIZE
AK55L	70	5.0	54.0	Single	1,350W Ceramic	100W or equivalent*	UL	-	4"	14½"W x 8¾"D x 6½"H
AK965L	70	3.5	51.0	Single	1,500W NiChrome Wire	100W or equivalent, 7W night light*	UL	-	4"	14½"W x 8¾"D x 6½"H
AK917	70	3.5	51.0	Single	250W Bulb	250W Heat Bulb*	UL	-	4"	8"W x 8"D x 5½"H

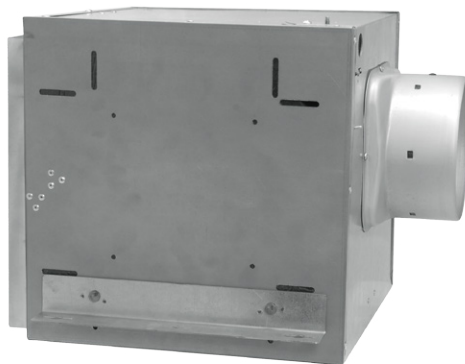
* Bulbs not included

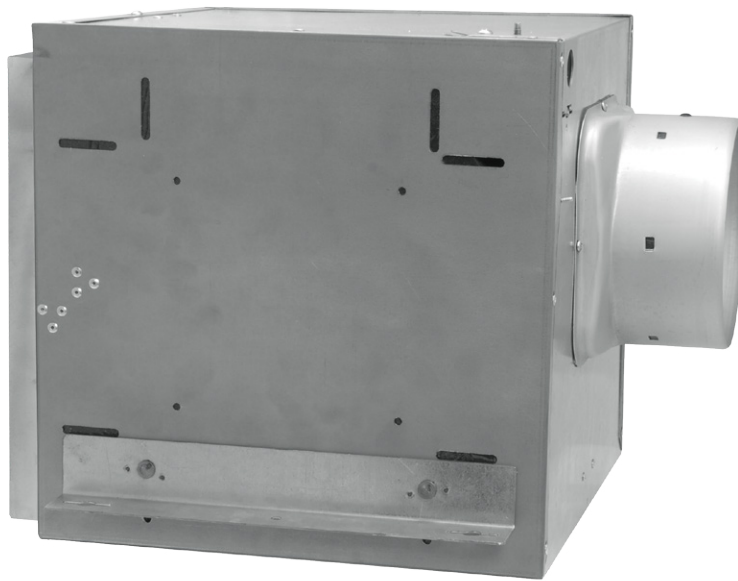


COMMERCIAL

INLINE FANS

Air King's commercial inline exhaust fans provide effective ventilation solutions for light commercial settings such as restaurant bathrooms, locker rooms, meeting rooms and more.

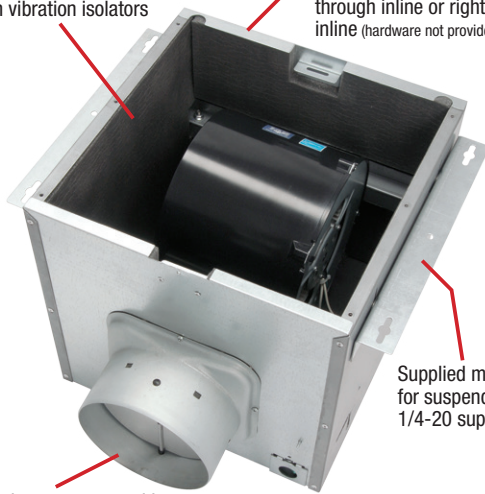




AKZA Series

Insulated housing with
motors & blowers mounted
on vibration isolators

Can be adapted for top
discharge mounting, straight
through inline or right angle
inline (hardware not provided)

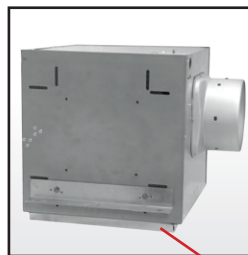


Supplied mounting angles
for suspended ceilings using
1/4-20 support rod

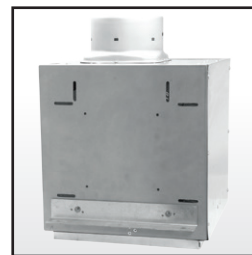
6" duct connector with
gasketed, spring loaded
aluminum backdraft damper

- Balanced polymeric dual inlet blower wheel
- Enclosed 4 pole high efficiency, permanently split capacitor motor (PSC); life time lubrication, suitable for continuous operation
- 23 gauge galvanized steel housing with 1" acoustic insulation
- Easy wiring access via either internal or external wiring compartment cover
- Unit mounts with the 2 supplied housing mounting angles that can be adapted for inline or top discharge mounting (hardware not provided)
- 6" Round duct connector with gasketed damper protects against backdrafts and seals the duct better than any other damper on the market today
- Convertible to 6" round inlet with model IA613R adapter (available separately)

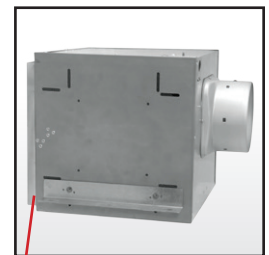
Inline Side (right angle)



Inline Vertical

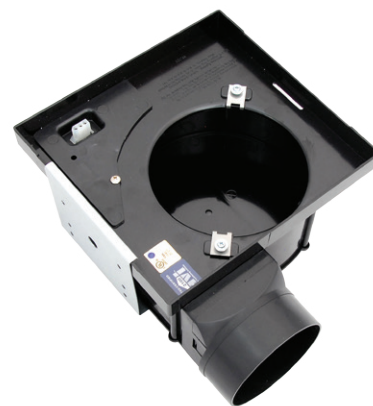
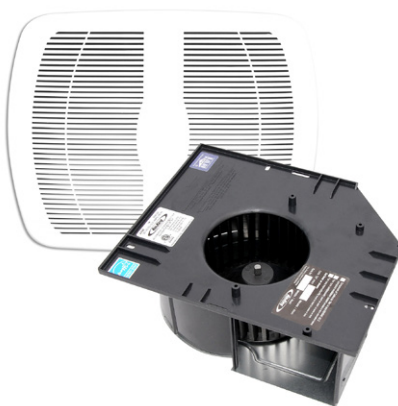
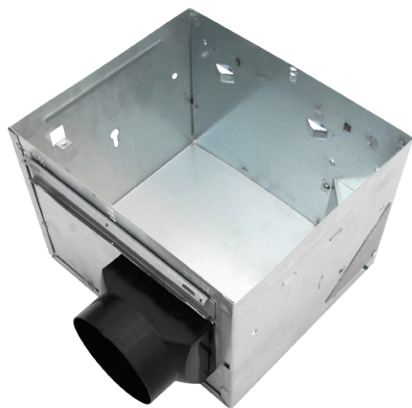


Inline Horizontal



Mounting flange for inline duct connection

MODEL	CFM @ 0.2 SP	MAX. FAN WATTS	SPEEDS	ENERGY STAR	GRILL	LISTING	DUCT SIZE	INLET	OPTIONAL INLET ADAPTER	HOUSING SIZE
AKZA150	120	34.4	Single	NO	N/A	ETL	6"	10 ¹¹ / ₁₆ " x 10 ⁹ / ₁₆ "	IA613R - 6"	12 ¹¹ / ₁₆ "W x 13 ¹ / ₁₆ "D x 12 ⁸ / ₁₆ "H
AKZA200	210	55.0	Single	YES	N/A	ETL	6"	10 ¹¹ / ₁₆ " x 10 ⁹ / ₁₆ "	IA613R - 6"	12 ¹¹ / ₁₆ "W x 13 ¹ / ₁₆ "D x 12 ⁸ / ₁₆ "H



CONTRACTOR PACKS

Sold in bulk packs for larger projects, contractor packs allow the housing that is needed for rough-in installation to be sent first. Then after the interior is completed, the internal workings of the unit (motor/blade/grill) can be received and installed.

HOUSINGS	MOTOR/ BLADE/GRILL	#PER PACK	CFM/ SONES	DUCT SIZE	SINGLE PACK MODEL #	SINGLE PACK PAGE
AKLS6 SERIES						
AK-2A6	AK80LS6T	4	80/0.5	6" plastic	AK80LS6	9
	AK100LS6T	4	100/1.0	6" plastic	AK100LS6	9
AK-2A6H	AK80LS6T	4	80/0.5	6" plastic	AK80LS6H	9
	AK100LS6T	4	100/1.0	6" plastic	AK100LS6H	9
AK SERIES						
AKX-1A	AK80LS1T	4	80/1.0	4" plastic	AK80LS-1	11
	AK80MBG	4	80/1.5	4" plastic	AK80	11
	AK90MBG	4	90/1.5	4" plastic	AK90	11
	AK110PNT	4	100/2.0	4" plastic	AK110PN	11
AKX-1HA	AK80LS1T	4	80/1.0	4" plastic	AK80H	11
	AK110PNT	4	100/2.0	4" plastic	AK100H	11
BFQ SERIES						
BFQHSG	BFQ50T	4	50/0.6	4" plastic	BFQ50	15
	BFQ75T	4	70/2.0	4" plastic	BFQ75	15
	BFQ80T	4	80/2.0	4" plastic	BFQ80	15
	BFQ90MBG	4	90/3.0	4" plastic	BFQ90	15
	BFQ110MBG	4	100/3.5	4" plastic	BFQ110	15
	BFQ140MBG	4	120/5.0	4" plastic	BFQ140	15
BFQ2HSG	BFQ50T	4	50/0.8	4" plastic	BFQ50W	15
	BFQ75T	4	70/2.0	4" plastic	BFQ70W	15
BFQLHSG	BFQL50T	4	50/0.8	4" plastic	BFQL50	16
	BFQL70T	4	70/2.0	4" plastic	BFQL70	16
AS SERIES						
ASLC12HSG	ASLC50MBG	12 / 4	50/3.0	4" plastic	ASLC50	22
	ASLC70MBG	12 / 4	70/4.0	4" plastic	ASLC70	22
ASHSG	AS50MBG	6	50/4.0	3" plastic	AS50	22
	AS70MBG	6	70/5.5	3" plastic	AS70	22
ATL18HSG	AS50MBG	18 / 6	50/3.0	4" plastic	AS54	22
	AS70MBG	18 / 6	70/5.5	4" plastic	N/A	22

FIRE RATED Series



HOUSINGS	MOTOR/ BLADE/GRILL	DAMPER	#PER PACK	CFM/ SONES	DUCT SIZE	SINGLE PACK MODEL #	SINGLE PACK PAGE
ENERGY STAR CERTIFIED FIRE RATED SERIES							
AKFH2	FAK50ST	AKFD2	4	50/0.6	4" metal	FRAK50S	25
	FAK80T	AKFD2	4	80/1.0	4" metal	FRAK80	25
	FAK90T	AKFD2	4	90/1.5	4" metal	FRAK90	25
	FAK100T	AKFD2	4	100/2.0	4" metal	FRAK100	25
AKFH2D	FAK100DT	AKFD2	4	100/2.0	4" metal	FRAK100D	25
FIRE RATED SERIES							
AKFH1	FA50T	AKFD1	4	50/3.0	3" metal	FRAS50	26
	FA70T	AKFD1	4	70/5.0	3" metal	FRAS70	26



EXHAUST ACCESSORIES

HUMIDITY CONTROL



DH55: White, rotary dial, dehumidistat control for on off control of Air King exhaust fans based on the humidity level of the room. Upon an increase in ambient relative humidity above the set point, the control will automatically turn the exhaust fan on until the humidity level has decreased below the set point at which time it will automatically turn the exhaust fan off. Perfect to use with all Air King ENERGY STAR® certified exhaust fans to comply with the California Title 24 requirements and the CALGreen standard. Can also be added to existing exhaust fans to provide humidity control and better the indoor air quality of the home. Fits a standard size electrical box.

BACKDRAFT DAMPERS



The Air King BDD series backdraft dampers features a steel ring with an aluminum butterfly style spring loaded damper that provides an excellent seal to the ducting. The dampers mount inline with the exhaust fan ducting and can be used in almost any round ducting application that required a backdraft damper. Available in 4" round, 6" round, or 8" round sizes.

BDD4R: Metal back draft damper, 4" round ducting

BDD6R: Metal back draft damper, 6" round ducting

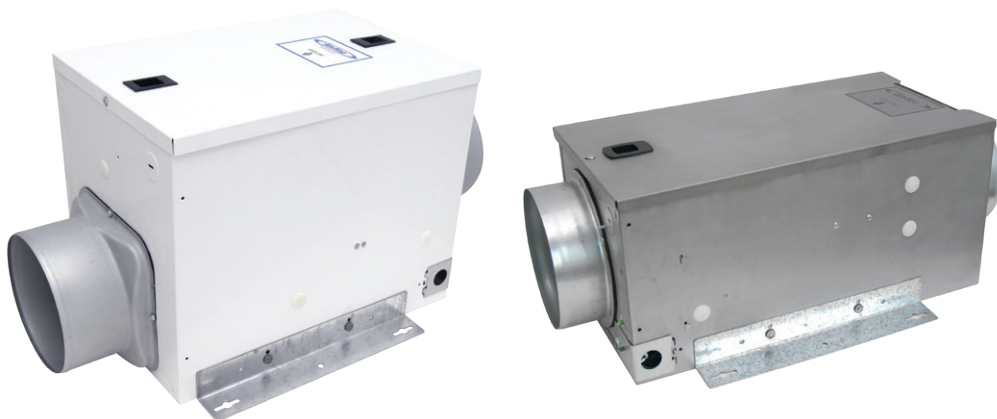
BDD8R: Metal back draft damper, 8" round ducting



FRESH AIR

FRESH AIR INTAKE

The Air King fresh air intake series offers home builders and developers a cost effective mechanical fresh air solution. Contractors and builders now have a practical offering for introducing constant fresh air from outside into the residence, meeting the fresh air CFM requirements. Q models include an internally mounted sensor with limits preventing the intake of outdoor air that is too humid, too hot, too cold or too dry.





QFAMD / F130D

QFAMD Series Controller



CONTINUOUS OPERATION MODE:

Unit will run continuously at the established CFM level as required by ASHRAE 62.2.

ENERGY SAVINGS MODE:

Internally mounted sensors provide limits preventing the intake of outdoor air that is too humid, too hot, too cold or too dry. The operator simply dials in the quantity (CFM) of outdoor air needed from the quiet energy efficient fan and sets the desired intake levels for the outside humidity and temperature.

INSTALLATION

- Designed to surface mount to a wall or ceiling with the included mounting brackets, connect power & ductwork, you're ready to go
- Inexpensive first cost method to bring in outdoor air using an independent fan
- No connection to HVAC system required
- Mount in basement, attic, equipment closet, laundry room, etc.
- 6" round duct connections for virtually unlimited duct length
- Suitable for single & multi-family projects

VERIFICATION

Includes easy access test port

COMPLIANT

- Component of ASHRAE 62.2 solution for outdoor air
- HVI Certified performance, ETL listed

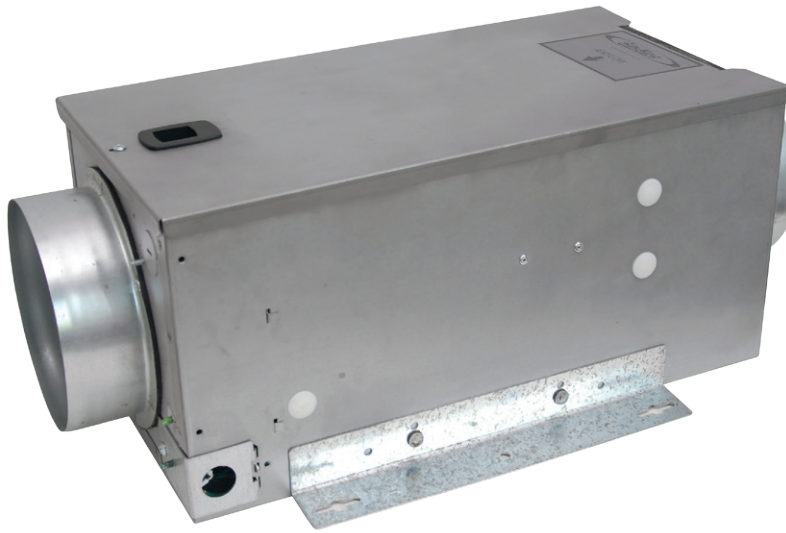
FEATURES

- Accepts nominal 10" x 10" x 2" up to MERV 16 filter through easy access filter door (Models AF16102 - MERV 16 filter, AF13102 - MERV 13 filter and AF8102 - MERV 8 filters available separately)
- Nearly silent operation, homeowner may not even know it is operating
- Can be used with a timer switch
- Continuous operation and Energy Savings modes (QFAMD model only)



MODEL	CFM @ .2 SP	MAX. FAN WATTS	ASHRAE 62.2	ENERGY STAR	CONTROLS	OPTIONAL FILTER	LISTING	DUCT SIZE	FAN FINISH	HOUSING SIZE
QFAMD	30 - 130	26.0	Outdoor Air	YES	Speed, Humidity, Temperature	MERV 8, 13, 16	ETL	6"	White Epoxy	14 ⁷ / ₈ "W x 10 ¹ / ₈ "D x 11 ¹ / ₂ "H
F130D	30 - 130	26.0	Outdoor Air	YES	Speed	MERV 8, 13, 16	ETL	6"	White Epoxy	14 ⁷ / ₈ "W x 10 ¹ / ₈ "D x 11 ¹ / ₂ "H





MQFAM Series Controller



CONTINUOUS OPERATION MODE:

Unit will run continuously at the established CFM level as required by ASHRAE 62.2.

ENERGY SAVINGS MODE:

Internally mounted sensors provide limits preventing the intake of outdoor air that is too humid, too hot, too cold or too dry. The operator simply dials in the quantity (CFM) of outdoor air needed from the quiet energy efficient fan and sets the desired intake levels for the outside humidity and temperature.

MQFAM / MFAS

INSTALLATION

- Designed to surface mount to a wall or ceiling with the included mounting brackets, connect power & ductwork, you're ready to go
- Inexpensive first cost method to bring in outdoor air using an independent fan
- No connection to HVAC system required
- Compact design fits nearly everywhere and is perfect for multi-family installations
- Mount in basement, attic, equipment closet, laundry room, etc.
- 6" round duct connections for virtually unlimited duct length
- Suitable for single & multi-family projects

VERIFICATION

Includes easy access test port

COMPLIANT

- Component of ASHRAE 62.2 solution for outdoor air
- HVI Certified performance, ETL listed

FEATURES

- Accepts nominal 8" x 9" x 2" up to MERV 13 filter through easy access filter door
(Models AF1382-2 - MERV 13 filter and AF882-2 - MERV 8 filters available separately)
- Nearly silent operation, homeowner may not even know it is operating
- Can be used with a timer switch
- Continuous operation and Energy Savings modes (MQFAM model only)

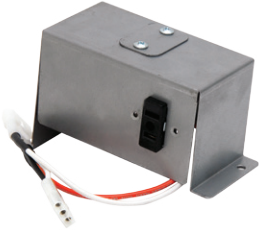
MODEL	CFM @ .2 SP	MAX. FAN WATTS	ASHRAE 62.2	ENERGY STAR	CONTROLS	OPTIONAL FILTER	LISTING	DUCT SIZE	FAN FINISH	HOUSING SIZE
MQFAM	50 or 80	82.9	Outdoor Air	NO	Speed, Humidity, Temperature	MERV 8, 13, 16	ETL	6"	Galvanized Steel	9"W x 17 ³ / ₈ "D x 8 ¹ / ₄ "H
MFAS	50 or 80	82.9	Outdoor Air	NO	Speed	MERV 8, 13, 16	ETL	6"	Galvanized Steel	9"W x 17 ³ / ₈ "D x 8 ¹ / ₄ "H





MOTORIZED DAMPER

MOTORIZED DAMPER CONNECTOR BOX



The QMDB allows the Air King MD624 motorized damper to be easily connected to an Air King Fresh Air unit. The box mounts directly to the Fresh Air unit and includes a wire harness to connect it directly to the electrical supply of the Fresh Air unit.

The MD624 motorized damper mounts inline with the ducting to Air King Fresh Air units. The lead wires from the unit connect to the included transformer that easily plugs into the receptacle of the QMDB. The single blade damper with an internal gasket tightly closes off ducting to minimize air leakage. When the Fresh Air unit is energized, the damper automatically opens, then closes when the main unit shuts off.

- Automatically opens when the QFAMD or F130D is operating
- Tight sealing damper minimizes any air leakage
- Easily mounts inline with QFAMD or F130D units
- Transformer and lead wire included
- Connection to QFAMD requires model QMDB (sold separately)

MODEL	POWER RATING	ENERGY STAR	FINISH	DAMPER	LEAD WIRES	CONNECTIONS	LISTING	DUCT SIZE	UNIT SIZE
MD624	24VAC, 60Hz, 6 watt	N/A	Galvanized Steel	Single blade with internal gasket	22 AWG, 12 inches	24 volt transformer	UL Recognized Component	6"	9 1/4"W x 6"D x 9"H



FRESH AIR ACCESSORIES

AIR FILTERS



An optional air filter can be added to the QFAMD, F130D, MQFAM or MFAS series unit to filter out unwanted pollutants from entering the dwelling. Air filters need to be replaced on a regular basis dependent on usage and environment. Addition of the filter may cause a decrease in airflow. Adjustments can be made with the units airflow selector to compensate.

QFAMD / F130D: **AF8102-2:** Nominal 10" x 10" x 2" MERV 8 filter (2 pack)

AF13102-2: Nominal 10" x 10" x 2" MERV 13 filter (2 pack)

AF16102-2: Nominal 10" x 10" x 2" MERV 16 filter (2 pack)

MQFAM / MFAS: **AF882-2:** Nominal 9" x 8" x 2" MERV 8 filter (2 pack)

AF1382-2: Nominal 9" x 8" x 2" MERV 13 filter (2 pack)

HEATING UNIT



The QH series heating units provide a way to raise the temperature of air coming into the dwelling in colder climates. The unit attaches to the QFAMD and is controlled by the unit controller. The self regulating ceramic heating element is bonded to a large transfer surface that allows heating at a very low operating temperature. For use with Air King QFAMD models only.

QH400: 400 watt, 120V, 60Hz. Total of 4.8 amps (including unit)

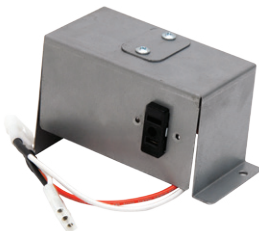
24 VOLT RELAY



The QR24 Relay provides a way to energize an Air King F130D, QFAMD, MFAS, or MQFAM unit from a remote 24 volt signal. The relay mounts directly to the unit and includes a direct plug-in connection to the unit. For use with Air King Fresh Air units only.

QR24: 24 Volt Relay, 24VAC, 60 Hz, single pole 110V/15amp

DAMPER CONNECTION BOX



The QMDB allows the Air King MD624 motorized damper to be easily connected to an Air King Fresh Air unit. The box mounts directly to the Fresh Air unit and includes a wire harness to connect it directly to the electrical supply of the Fresh Air unit..

QMDB: Connection box

SPECIFICATIONS

MODEL	CFM	SONES	SOUND LEVEL	LIGHTING	ENERGY STAR	CALGREEN	ASHRAE 62.2	LISTING	DUCT SIZE	HOUSING SIZE	PAGE
EVD	30-150	<0.3	Almost Silent	N/A	YES	Other Rooms	Whole Building/Local	ETL	6"	12 $\frac{7}{8}$ "W x 12 $\frac{3}{4}$ "D x 9 $\frac{7}{8}$ "H	5
EVLD	30-150	<0.3	Almost Silent	LED	YES	Other Rooms	Whole Building/Local	ETL	6"	12 $\frac{7}{8}$ "W x 12 $\frac{3}{4}$ "D x 9 $\frac{7}{8}$ "H	5
EVDGH	30-150	<0.3	Almost Silent	N/A	YES	Bathrooms	Whole Building/Local	ETL	6"	12 $\frac{7}{8}$ "W x 12 $\frac{3}{4}$ "D x 9 $\frac{7}{8}$ "H	5
EVLDGH	30-150	<0.3	Almost Silent	LED	YES	Bathrooms	Whole Building/Local	ETL	6"	12 $\frac{7}{8}$ "W x 12 $\frac{3}{4}$ "D x 9 $\frac{7}{8}$ "H	5
EVDH	30-150	<0.3	Almost Silent	N/A	YES	Bathrooms	Whole Building/Local	ETL	6"	12 $\frac{7}{8}$ "W x 12 $\frac{3}{4}$ "D x 9 $\frac{7}{8}$ "H	5
EVLDH	30-150	<0.3	Almost Silent	LED	YES	Bathrooms	Whole Building/Local	ETL	6"	12 $\frac{7}{8}$ "W x 12 $\frac{3}{4}$ "D x 9 $\frac{7}{8}$ "H	5
E80S	80	<0.3	Almost Silent	N/A	YES	Other Rooms	Whole Building/Local	ETL	6"	12 $\frac{7}{8}$ "W x 12 $\frac{3}{4}$ "D x 9 $\frac{7}{8}$ "H	7
E110S	110	<0.3	Almost Silent	N/A	YES	Other Rooms	Whole Building/Local	ETL	6"	12 $\frac{7}{8}$ "W x 12 $\frac{3}{4}$ "D x 9 $\frac{7}{8}$ "H	7
E130S	130	<0.3	Almost Silent	N/A	YES	Other Rooms	Whole Building/Local	ETL	6"	12 $\frac{7}{8}$ "W x 12 $\frac{3}{4}$ "D x 9 $\frac{7}{8}$ "H	7
E80SH	80	<0.3	Almost Silent	N/A	YES	Bathrooms	Whole Building/Local	ETL	6"	12 $\frac{7}{8}$ "W x 12 $\frac{3}{4}$ "D x 9 $\frac{7}{8}$ "H	7
E130SH	130	<0.3	Almost Silent	N/A	YES	Bathrooms	Whole Building/Local	ETL	6"	12 $\frac{7}{8}$ "W x 12 $\frac{3}{4}$ "D x 9 $\frac{7}{8}$ "H	7
AK150LS	150	0.9	Very Quiet	N/A	YES	Other Rooms	Local	UL	6"	12 $\frac{7}{8}$ "W x 12 $\frac{3}{4}$ "D x 9 $\frac{7}{8}$ "H	9
AK200LS	200	1.2	Quiet	N/A	YES	Other Rooms	Local	UL	6"	12 $\frac{7}{8}$ "W x 12 $\frac{3}{4}$ "D x 9 $\frac{7}{8}$ "H	9
AK280LS	280	3.0	Quiet	N/A	YES	Other Rooms	Local	UL	6"	12 $\frac{7}{8}$ "W x 12 $\frac{3}{4}$ "D x 9 $\frac{7}{8}$ "H	9
AK80LS6	80	0.5	Very Quiet	N/A	YES	Other Rooms	Whole Building/Local	UL	6"	10 $\frac{7}{8}$ "W x 9 $\frac{3}{8}$ "D x 7 $\frac{7}{8}$ "H	9
AK90LS6	90	0.8	Very Quiet	N/A	YES	Other Rooms	Whole Building/Local	UL	6"	10 $\frac{7}{8}$ "W x 9 $\frac{3}{8}$ "D x 7 $\frac{7}{8}$ "H	9
AK100LS6	100	1.0	Very Quiet	N/A	YES	Other Rooms	Whole Building/Local	UL	6"	10 $\frac{7}{8}$ "W x 9 $\frac{3}{8}$ "D x 7 $\frac{7}{8}$ "H	9
AK110LS6	110	1.4	Quiet	N/A	YES	Other Rooms	Local	UL	6"	10 $\frac{7}{8}$ "W x 9 $\frac{3}{8}$ "D x 7 $\frac{7}{8}$ "H	9
AK80LS6H	80	0.5	Very Quiet	N/A	YES	Bathrooms	Whole Building/Local	UL	6"	10 $\frac{7}{8}$ "W x 9 $\frac{3}{8}$ "D x 7 $\frac{7}{8}$ "H	9
AK100LS6H	100	1.0	Very Quiet	N/A	YES	Bathrooms	Whole Building/Local	UL	6"	10 $\frac{7}{8}$ "W x 9 $\frac{3}{8}$ "D x 7 $\frac{7}{8}$ "H	9
AK80LS	80	0.7	Very Quiet	N/A	YES	Other Rooms	Whole Building/Local	UL	4"	10 $\frac{7}{8}$ "W x 9 $\frac{3}{8}$ "D x 7 $\frac{7}{8}$ "H	9
AK110LS	110	1.5	Quiet	N/A	YES	Other Rooms	Whole Building/Local	UL	4"	10 $\frac{7}{8}$ "W x 9 $\frac{3}{8}$ "D x 7 $\frac{7}{8}$ "H	9
AK50S	50	0.5	Very Quiet	N/A	YES	Other Rooms	Whole Building/Local	UL	4"	10 $\frac{7}{8}$ "W x 9 $\frac{3}{8}$ "D x 7 $\frac{7}{8}$ "H	11
AK80LS-1	80	1.0	Very Quiet	N/A	YES	Other Rooms	Whole Building/Local	UL	4"	10 $\frac{7}{8}$ "W x 9 $\frac{3}{8}$ "D x 7 $\frac{7}{8}$ "H	11
AK80	80	1.5	Quiet	N/A	YES	Other Rooms	Local	UL	4"	10 $\frac{7}{8}$ "W x 9 $\frac{3}{8}$ "D x 7 $\frac{7}{8}$ "H	11
AK80H	80	1.0	Very Quiet	N/A	YES	Bathrooms	Local	UL	4"	10 $\frac{7}{8}$ "W x 9 $\frac{3}{8}$ "D x 7 $\frac{7}{8}$ "H	11
AK90	90	1.5	Quiet	N/A	YES	Other Rooms	Local	UL	4"	10 $\frac{7}{8}$ "W x 9 $\frac{3}{8}$ "D x 7 $\frac{7}{8}$ "H	11
AK110PN	100	2.0	Quiet	N/A	YES	Other Rooms	Local	UL	4"	10 $\frac{7}{8}$ "W x 9 $\frac{3}{8}$ "D x 7 $\frac{7}{8}$ "H	11
AK100H	100	2.0	Quiet	N/A	YES	Bathrooms	Local	UL	4"	10 $\frac{7}{8}$ "W x 9 $\frac{3}{8}$ "D x 7 $\frac{7}{8}$ "H	11
AK100D	50 / 100	0.4 / 2.0	Quiet	N/A	YES	Other Rooms	Whole Building/Local	UL	4"	10 $\frac{7}{8}$ "W x 9 $\frac{3}{8}$ "D x 7 $\frac{7}{8}$ "H	11
LEDAK50	50	0.3	Very Quiet	LED	YES	Other Rooms	Whole Building/Local	UL	4"	10 $\frac{7}{8}$ "W x 9 $\frac{3}{8}$ "D x 7 $\frac{7}{8}$ "H	11
LEDAK80	80	1.2	Quiet	LED	YES	Other Rooms	Local	UL	4"	10 $\frac{7}{8}$ "W x 9 $\frac{3}{8}$ "D x 7 $\frac{7}{8}$ "H	11
LEDAK100	100	2.0	Quiet	LED	YES	Other Rooms	Local	UL	4"	10 $\frac{7}{8}$ "W x 9 $\frac{3}{8}$ "D x 7 $\frac{7}{8}$ "H	11
LEDAK100H	100	2.0	Quiet	LED	YES	Bathrooms	Local	UL	4"	10 $\frac{7}{8}$ "W x 9 $\frac{3}{8}$ "D x 7 $\frac{7}{8}$ "H	11
LEDAK100D	50 / 100	0.4 / 2.0	Quiet	LED	YES	Other Rooms	Whole Building/Local	UL	4"	10 $\frac{7}{8}$ "W x 9 $\frac{3}{8}$ "D x 7 $\frac{7}{8}$ "H	11
BFC90	90	1.0	Very Quiet	N/A	YES	Other Rooms	Whole Building/Local	ETL	4"	9"W x 9"D x 7 $\frac{7}{8}$ "H	13
BFC90H	90	1.0	Very Quiet	N/A	YES	Bathrooms	Whole Building/Local	ETL	4"	9"W x 9"D x 7 $\frac{7}{8}$ "H	13
BFC100	100	1.0	Very Quiet	N/A	YES	Other Rooms	Whole Building/Local	ETL	4"	9"W x 9"D x 7 $\frac{7}{8}$ "H	13
BFC100H	100	1.0	Very Quiet	N/A	YES	Bathrooms	Whole Building/Local	ETL	4"	9"W x 9"D x 7 $\frac{7}{8}$ "H	13

SPECIFICATIONS

MODEL	CFM	SONES	SOUND LEVEL	LIGHTING	ENERGY STAR	CALGREEN	ASHRAE 62.2	LISTING	DUCT SIZE	HOUSING SIZE	PAGE
BFQ50	50	0.6	Very Quiet	N/A	YES	Other Rooms	Whole Building/Local	UL	4"	9 ¹ / ₈ "W x 8 ¹ / ₁₆ "D x 4 ³ / ₄ "H	15
BFQ75	70	2.0	Quiet	N/A	YES	Other Rooms	Local	UL	4"	9 ¹ / ₈ "W x 8 ¹ / ₁₆ "D x 4 ³ / ₄ "H	15
BFQ80	80	2.0	Quiet	N/A	NO	NO	Local	UL	4"	9 ¹ / ₈ "W x 8 ¹ / ₁₆ "D x 4 ³ / ₄ "H	15
BFQ90	90	3.0	Quiet	N/A	NO	NO	Local	UL	4"	9 ¹ / ₈ "W x 8 ¹ / ₁₆ "D x 4 ³ / ₄ "H	15
BFQ110	100	3.5	Moderate	N/A	NO	NO	NO	UL	4"	9 ¹ / ₈ "W x 8 ¹ / ₁₆ "D x 4 ³ / ₄ "H	15
BFQ140	120	5.0	Moderate	N/A	NO	NO	NO	UL	4"	9 ¹ / ₈ "W x 8 ¹ / ₁₆ "D x 4 ³ / ₄ "H	15
BFQL50	50	0.8	Very Quiet	LED	YES	NO	Whole Building/Local	UL	4"	9 ¹ / ₈ "W x 8 ¹ / ₂ "D x 5 ³ / ₄ "H	16
BFQL70	70	2.0	Quiet	LED	YES	NO	Local	UL	4"	9 ¹ / ₈ "W x 8 ¹ / ₂ "D x 5 ³ / ₄ "H	16
AK100L	100	2.5	Quiet	Incandescent	NO	NO	Local	UL	4"	9 ¹ / ₈ "W x 10 ⁷ / ₈ "D x 7 ⁷ / ₈ "H	18
AK864L	100	3.5	Moderate	Incandescent	NO	NO	NO	UL	4"	9 ¹ / ₈ "W x 9 ¹ / ₄ "D x 5 ⁷ / ₈ "H	18
AK864L	100	3.5	Moderate	Incandescent	NO	NO	NO	UL	4"	9 ¹ / ₈ "W x 9 ¹ / ₄ "D x 5 ⁷ / ₈ "H	18
DRLC701	70	4.0	Moderate	Incandescent	NO	NO	NO	UL	4"	7 ³ / ₈ "W x 7 ³ / ₈ "D x 5 ⁷ / ₈ "H	20
DRLC702	70	4.0	Moderate	Incandescent	NO	NO	NO	UL	4"	7 ³ / ₈ "W x 7 ³ / ₈ "D x 5 ⁷ / ₈ "H	20
DRLC703	70	4.0	Moderate	Incandescent	NO	NO	NO	UL	4"	7 ³ / ₈ "W x 7 ³ / ₈ "D x 5 ⁷ / ₈ "H	20
AS54	50	3.0	Quiet	N/A	NO	NO	Local	UL	4"	7 ¹ / ₄ "W x 7 ¹ / ₄ "D x 4 ³ / ₄ "H	22
AS50	50	4.0	Quiet	N/A	NO	NO	NO	UL	3"	7 ¹ / ₄ "W x 7 ¹ / ₄ "D x 3 ³ / ₄ "H	22
AS70	70	5.5	High	N/A	NO	NO	NO	UL	3"	7 ¹ / ₄ "W x 7 ¹ / ₄ "D x 3 ³ / ₄ "H	22
ASLC50	50	3.0	Moderate	Incandescent	NO	NO	Local	UL	4"	7 ³ / ₈ "W x 7 ³ / ₈ "D x 5 ⁷ / ₈ "H	22
ASLC70	70	5.5	Moderate	Incandescent	NO	NO	NO	UL	4"	7 ³ / ₈ "W x 7 ³ / ₈ "D x 5 ⁷ / ₈ "H	22
FRAK50S	50	0.6	Very Quiet	N/A	YES	Other Rooms	Whole Building/Local	UL	4"	11 ⁵ / ₁₆ "W x 9 ¹ / ₂ "D x 7 ⁷ / ₈ "H	25
FRAK80	80	1.0	Very Quiet	N/A	YES	Other Rooms	Whole Building/Local	UL	4"	11 ⁵ / ₁₆ "W x 9 ¹ / ₂ "D x 7 ⁷ / ₈ "H	25
FRAK90	90	1.5	Quiet	N/A	YES	Other Rooms	Local	UL	4"	11 ⁵ / ₁₆ "W x 9 ¹ / ₂ "D x 7 ⁷ / ₈ "H	25
FRAK100	100	2.0	Quiet	N/A	YES	Other Rooms	Local	UL	4"	11 ⁵ / ₁₆ "W x 9 ¹ / ₂ "D x 7 ⁷ / ₈ "H	25
FRAK100	100/50	2.0 / 0.8	Quiet	N/A	YES	Other Rooms	Local	UL	4"	11 ⁵ / ₁₆ "W x 9 ¹ / ₂ "D x 7 ⁷ / ₈ "H	25
FRAS50	50	3.0	Quiet	N/A	NO	NO	NO	UL	3"	7 ⁷ / ₈ "W x 7 ¹ / ₁₆ "D x 5 ⁷ / ₈ "H	26
FRAS70	70	4.0	High	N/A	NO	NO	NO	UL	3"	7 ⁷ / ₈ "W x 7 ¹ / ₁₆ "D x 5 ⁷ / ₈ "H	26
AK55L	70	5.0	High	Incandescent	NO	NO	NO	UL	4"	14 ¹ / ₂ "W x 8 ³ / ₈ "D x 6 ¹ / ₂ "H	28
AK965L	70	3.5	Moderate	Incandescent	NO	NO	NO	UL	4"	14 ¹ / ₂ "W x 8 ³ / ₈ "D x 6 ¹ / ₂ "H	28
AK917	70	3.5	Moderate	Heat Lamp	NO	NO	NO	UL	4"	8"W x 8"D x 5 ⁷ / ₈ "H	28
AKZA150	120	-	N/A	N/A	NO	NO	N/A	ETL	6"	12 ¹ / ₁₆ "W x 13 ¹ / ₁₆ "D x 12 ⁹ / ₁₆ "H	30
AKZA200	210	-	N/A	N/A	NO	NO	N/A	ETL	6"	12 ¹ / ₁₆ "W x 13 ¹ / ₁₆ "D x 12 ⁹ / ₁₆ "H	30
QFAMD	30-130	N/A	Almost Silent	N/A	YES	N/A	Outdoor Air	ETL	6"	14 ⁷ / ₈ "W x 10 ⁷ / ₈ "D x 11 ¹ / ₂ "H	34
F130D	40-120	N/A	Almost Silent	N/A	YES	N/A	Outdoor Air	ETL	6"	14 ⁷ / ₈ "W x 10 ⁷ / ₈ "D x 11 ¹ / ₂ "H	34
MQFAM	50 / 80	N/A	Almost Silent	N/A	NO	N/A	Outdoor Air	ETL	6"	9"W x 17 ³ / ₈ "D x 8 ¹ / ₄ "H	35
MFAS	50 / 80	N/A	Almost Silent	N/A	NO	N/A	Outdoor Air	ETL	6"	9"W x 17 ³ / ₈ "D x 8 ¹ / ₄ "H	35



BFC Series

QUIET
ONLY 1.0 Sones

EFFICIENT
ENERGY STAR® Certified

EFFECTIVE
90 CFM or 100 CFM Models



11 TIME ENERGY STAR® PARTNER OF THE YEAR

2024, 2023, 2022, 2021, 2020, 2019, 2014 Partner of the Year - Sustained Excellence
2018, 2017, 2013 and 2012 Partner of the Year, 2014 Climate Communications

